

ASX/Media Release
24th of June 2008

Commenced Drilling of Mt Garnet Tin Project Area

Key Points

- Drilling commenced at Mt Garnet Tin Project in northern Queensland.
- Drill program to target Gillian, Pinnacles and Deadman's Gully deposits to verify existing data and obtain material to begin metallurgical testing.
- Gillian deposit has JORC compliant indicated resource of 2.3Mt @ 0.8% tin (Sn) (18,000t contained tin metal)
- Drilling will also test for iron (Fe); rock chip sampling produced anomalous iron values of 30%–50%
- Program will drill approx 2000m RC drilling on total of 27 holes
- Company's goal is to become Queensland's premier hard rock tin miner

Australian tin exploration company Consolidated Tin Mines (ASX: CSD) (Consolidated Tin, the Company) is pleased to advise that drilling has commenced at its Mt Garnet Project area in northern Queensland.

The drilling program will target three deposits; Gillian, Pinnacles and Deadman's Gully and is designed to provide verification of existing data and obtain material to commence detailed metallurgical testing. The program plans to drill approximately 2000m of Reverse Circulation (RC) drilling on a total of 27 holes.

The Mt Garnet Project area is located by road 200km south west of Cairns in the southern extent of one of Australia's premier tin fields the Herberton Tin Fields. Recorded historic production from the Herberton Tin field is approximately 150,000 tonne of tin mineral concentrate.

The Gillian deposit already has a JORC compliant indicated resource of 2.3Mt at 0.8% tin (for 18,000t of contained tin metal), and mineralisation outcrops with widths of up to 14 metres of 0.7% Sn in the south west portion of the mineralised zone.

The drilling program will also test for other economic elements like iron (Fe). The tin mineralised deposits are iron rich occurrences and Fe has not been systematically assayed for in the previous programs. Recent rock chip sampling by Consolidated Tin has produced anomalous Fe values of 30%–50%.



Consolidated Tin managing director Mr Ralph De Lacey said that he was delighted that the drilling program was underway and excited that the program signaled the next stage in the Company's long term development plans at Mt Garnet.

"We are committed to taking the project to production in the future with our goal to become Queensland's premier tin miner and the results from the current drill program will lay the foundation for us to commence firming up our development parameters," he said.

Results of the drilling program will be announced as soon as they come to hand.

ENDS

A handwritten signature in cursive script that reads "Ralph De Lacey".

Ralph De Lacey
Managing Director



For further information please contact;

Ralph De Lacey
Managing Director
Consolidated Tin Mines Limited
P: 07 4081 0241
M: 0428 163 176
E: rd@consolidatedtinmines.com.au

W: www.consolidatedtinmines.com.au

James Moses
Fortbridge Consulting
M: 0420 991 574
E: james.moses@fortbridge.com

The information contained in this report that relates to assay results of rock samples and drill chips, to mineral resource estimates and to ore reserve estimates of mineralisation has been approved for release by John Sainsbury (BSc, AusIMM). John Sainsbury is a geologist of 30 years experience and has sufficient experience in the type of mineralisation under consideration to be a Competent Person as defined by the Australasian Code for Reporting of Exploration Results, Mineral Resources and Ore Reserves - JORC Code, 2004 Edition. John Sainsbury is an executive director of Consolidated Tin Mines Limited. John Sainsbury has consented to the inclusion of this information in the form and context in which it appears.

About Consolidated Tin Mines

Consolidated Tin Mines listed on the ASX in February this year with projects in one of the premier tin producing fields in Australia, and the Company is focused on discovering and developing major tin deposits in northern Queensland.

The company has acquired an impressive portfolio of advanced tin exploration projects in the southern Herberton tin field for development and transformation into a successful mining operation, to provide increased shareholder returns.

Consolidated Tin is driven by an experienced board of directors with a proven record of successful exploration and mining. The Company's vision is to become the premier hard rock tin producer in Queensland.



Location of Drilling

Consolidated Tin Mines Limited

Gillian Drill Program

Drawn By: Michael Proctor Scale: 1:4,000 Date: June, 2008

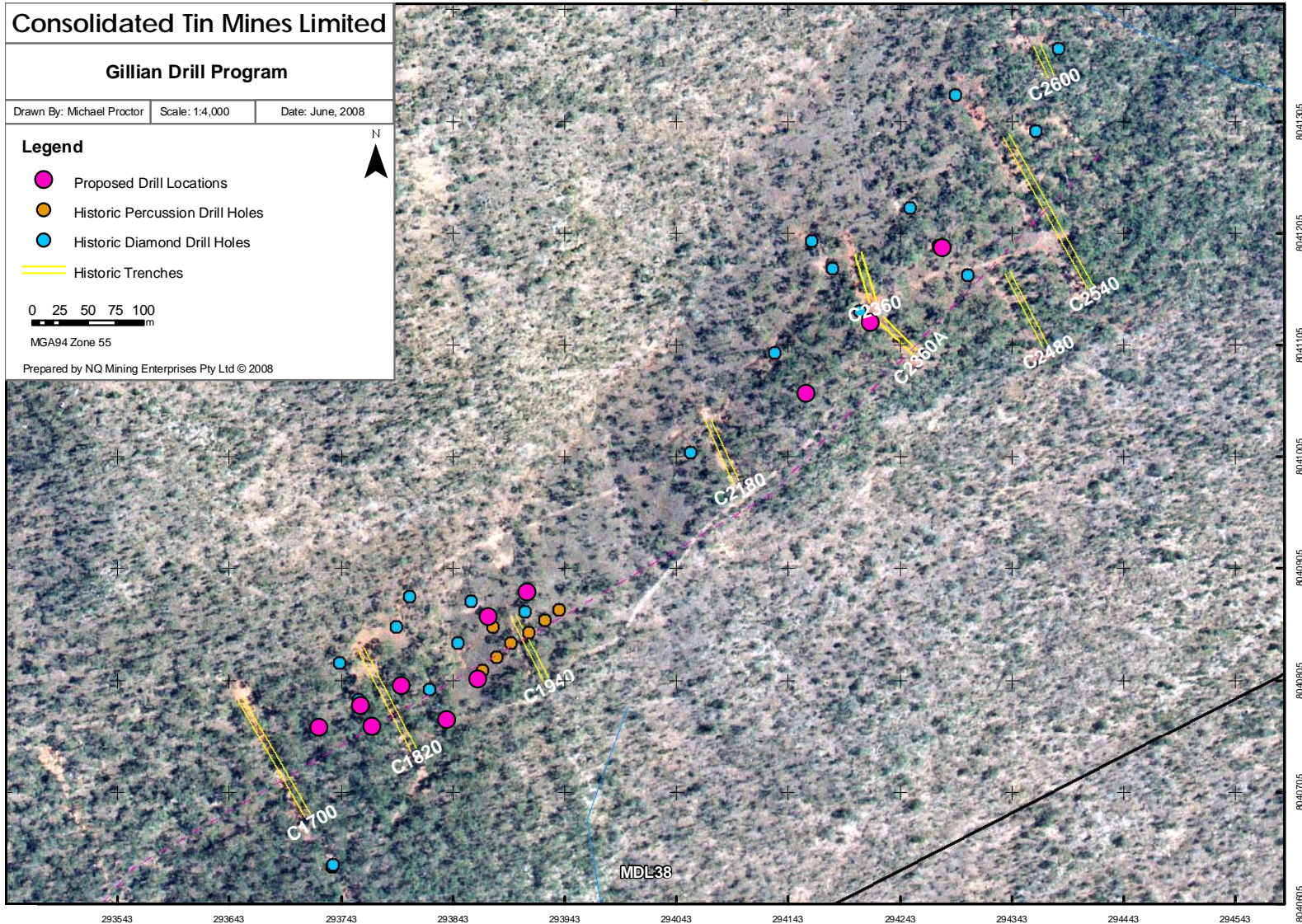
Legend

- Proposed Drill Locations
- Historic Percussion Drill Holes
- Historic Diamond Drill Holes
- Historic Trenches

0 25 50 75 100
 m

MGA94 Zone 55

Prepared by NQ Mining Enterprises Pty Ltd © 2008



Gillian Proposed Drill Locations

Consolidated Tin Mines Limited

Pinnacles Drill Program

Drawn By: Michael Proctor Scale: 1:4,000 Date: June, 2008

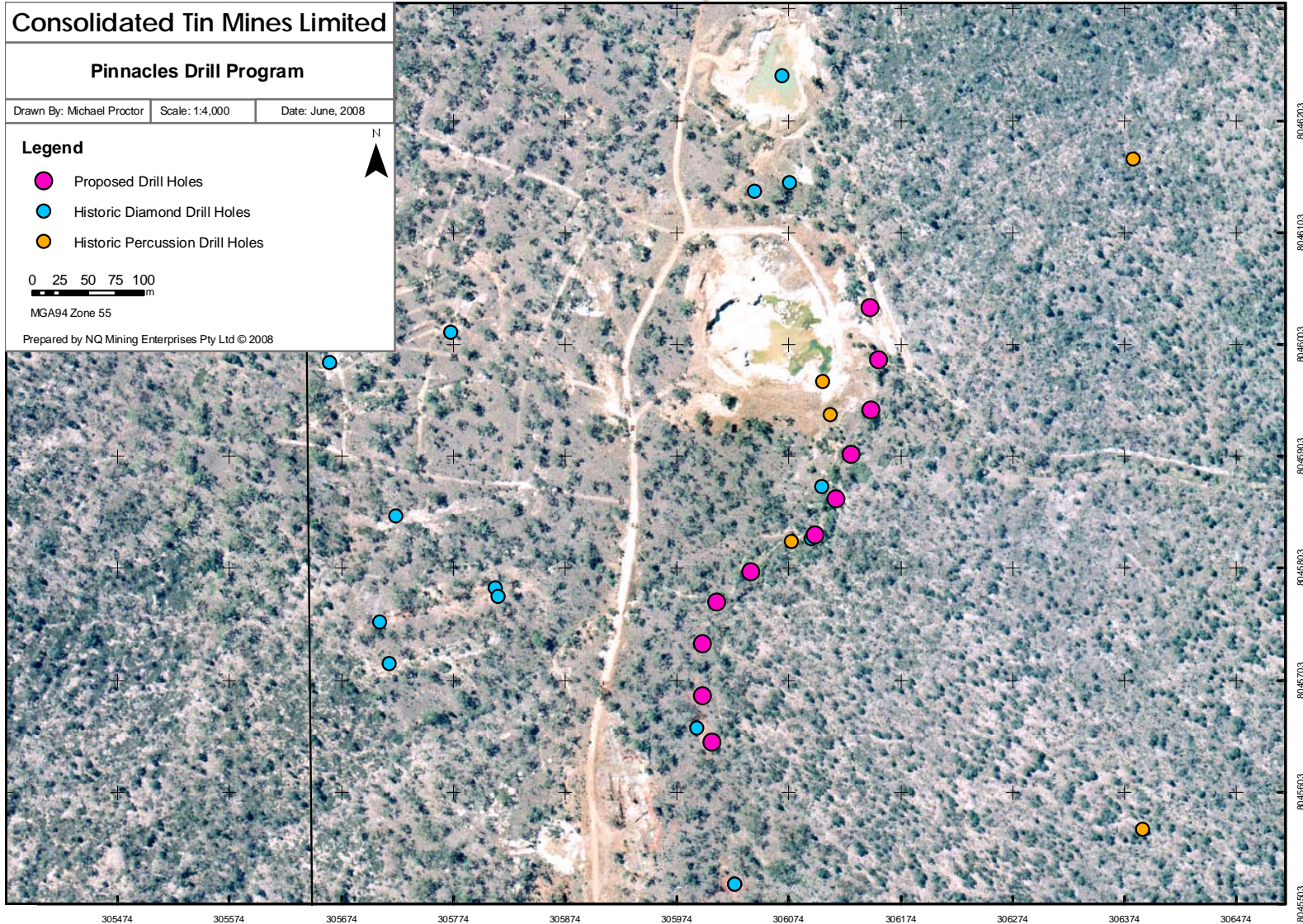
Legend

- Proposed Drill Holes
- Historic Diamond Drill Holes
- Historic Percussion Drill Holes

0 25 50 75 100
 m

MGA94 Zone 55

Prepared by NQ Mining Enterprises Pty Ltd © 2008



Pinnacles Proposed Drill Locations

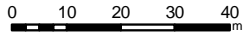
Consolidated Tin Mines Limited

Deadmans Gully Drill Program

Drawn By: Michael Proctor Scale: 1:1,000 Date: June, 2008

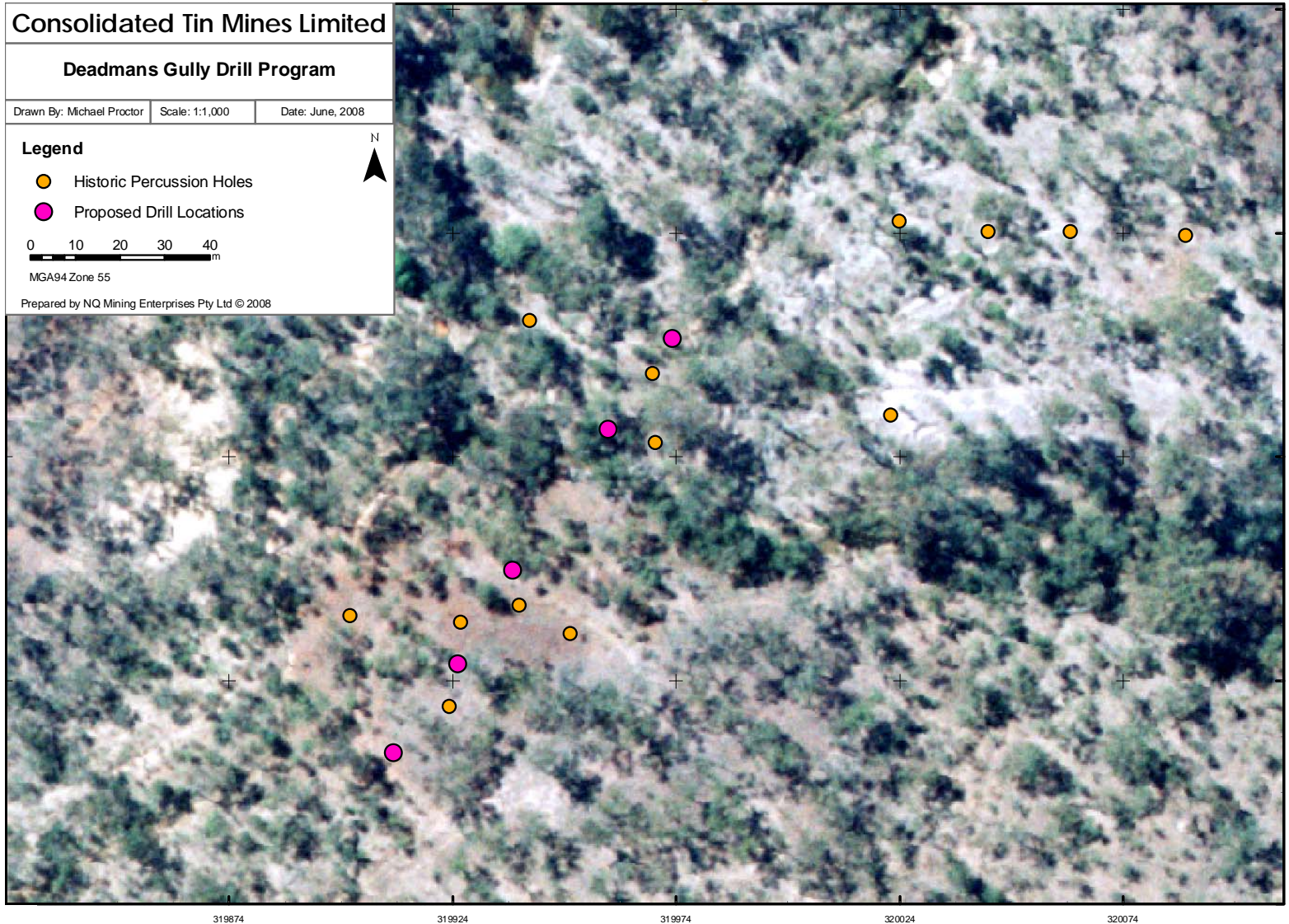
Legend

- Historic Percussion Holes
- Proposed Drill Locations



MGA94 Zone 55

Prepared by NQ Mining Enterprises Pty Ltd © 2008



Deadman's Gully Drill Locations