

For personal use only

CONSOLIDATED
TIN MINES LTD
ABN 57 126 634 606



Annual Report

For The Year Ended
30 June 2009

CONSOLIDATED TIN MINES LIMITED

ABN 57 126 634 606

CORPORATE DIRECTORY

Board of Directors

Mr Ralph De Lacey	Chairman (Executive)
Mr John Sainsbury	Executive Director
Mr Andrew Kerr	Non-Executive Director

Company Secretary

Mr Kevin Hart

Registered Office

395 Lake Street
Cairns North QLD 4870

Principal Administrative Office

395 Lake Street
Cairns North QLD 4870
Telephone: (07) 4032 3319
Fax: (07) 4027 9429

Auditors

BDO Kendalls (Nth QLD)
27 Aplin Street
Cairns, QLD 4870

Share Registry

Share Transfer Registrars Pty Ltd
770 Canning Highway
Applecross, WA 6153
Telephone: +61 8 9315 2333
Fax: +61 8 9315 2233

Stock Exchange Listing

Australian Securities Exchange
Perth, Western Australia

Website Address

www.consolidatedtinmines.com.au

ASX Codes

CSD – Ordinary Shares
CSDO – Options expiring 31/12/2013

CONTENTS

CHAIRMAN'S LETTER	3
REVIEW OF OPERATIONS.....	4
CORPORATE GOVERNANCE STATEMENT.....	11
DIRECTORS' REPORT	14
AUDITOR'S INDEPENDENCE DECLARATION	19
INCOME STATEMENT	20
BALANCE SHEET	21
STATEMENT OF CHANGES IN EQUITY	22
CASH FLOW STATEMENT.....	23
NOTES TO THE FINANCIAL STATEMENTS	24
DIRECTORS' DECLARATION.....	47
INDEPENDENT AUDIT REPORT	48
ADDITIONAL INFORMATION	50
SCHEDULE OF MINERAL TENEMENTS	52



CHAIRMAN'S LETTER

Dear Shareholder

These are exciting times for Consolidated Tin Mines as we continue to move forward with our development plans for a large scale tin mining operation at our Mt Garnet Project in northern Queensland.

The directors remain focused on the three key project areas at Mt Garnet and the development of a central mill concept to bring each of these projects into production as quickly as possible.

Exploration results from our drill programs to date have been extremely encouraging, and have helped to validate our development plans for the projects. The next phase of drilling is scheduled to commence in October this year, and the Company expects to upgrade the current JORC Resource at the Mt Garnet Project by early 2010.

The Company has also made significant progress on issues such as mining lease applications and environmental baseline studies at the project. At the same time we have been able to negotiate our way through the global financial crisis in a sound financial position, thanks in large part, to the prudent management of your Board.

I am also pleased to report that the Company recently appointed an experienced, high calibre senior tin metallurgist. Mr Bob Shelley joined the Company in August and is one of the pre-eminent tin experts in his field, and his appointment represents another significant step forward in our development plans for the project. Among other things, he will be tasked with developing an optimised tin recovery circuit.

We also remained focused on developing our alluvial tin projects into mining operations in the near term and will continue to strive to achieve this objective. These projects potentially offer strong operating margins to the Company which we plan to utilise to self fund some of our hard rock exploration and mine development.

Looking ahead to the coming 12 months, the Company will continue to progress its development plans for the Mt Garnet Tin Project and seek to add value for shareholders at every opportunity, while still carefully managing our expenditure.

I would like to thank my fellow directors for their continuing support and commitment to the goals of the Company, and the employees and contractors for their strong contribution to our achievements over the last year.

I would also like to thank all shareholders for their continuing support.

I and my fellow directors look forward to the coming year as we continue development of the Company.

Yours sincerely

Mr Ralph De Lacey
Chairman of the Board

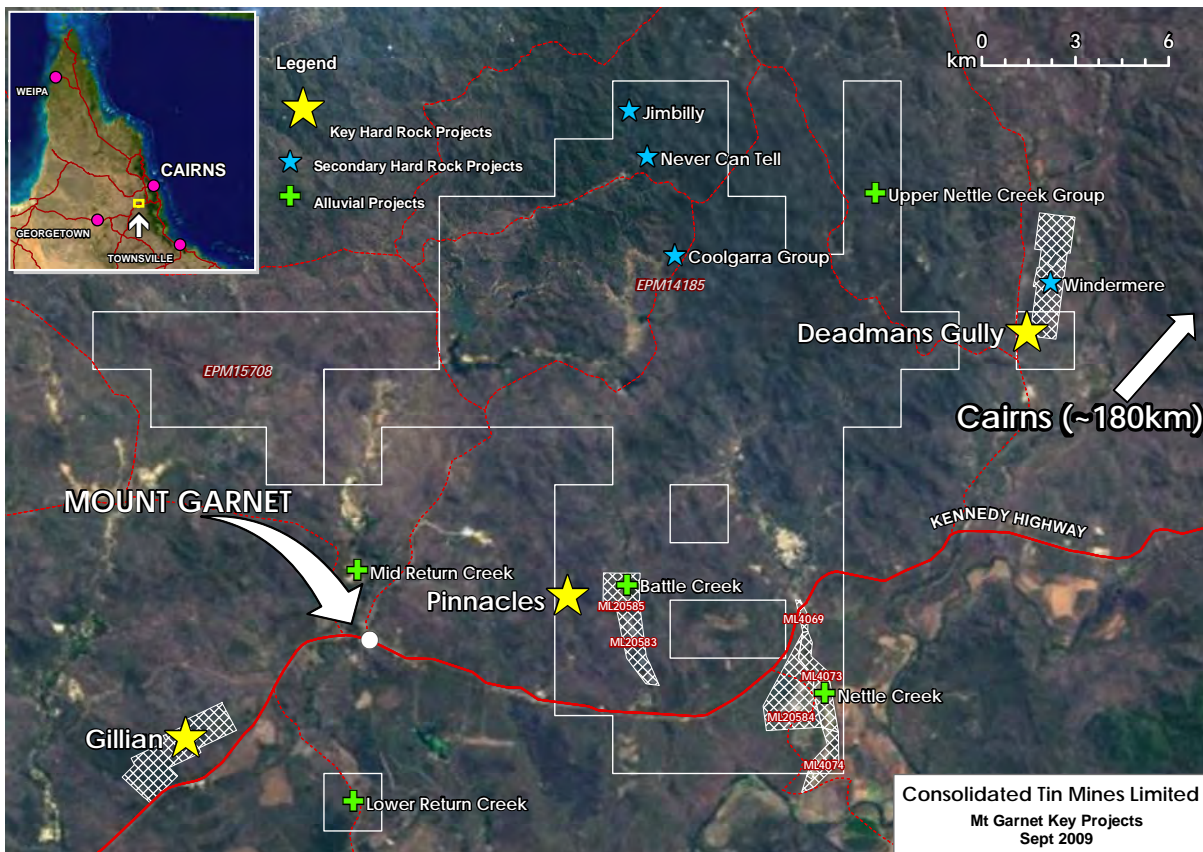
REVIEW OF OPERATIONS

Three Key Project Areas

The Company has maintained focus on its three key project areas of Gillian, Pinnacles and Windermere (Deadman's Gully being the southern extent) in the Herberton Tin Field, near Cairns in far north Queensland. The Company's aim is to establish an 8 to 10 million tonne resource across these three areas with an average grade of 0.5% Sn. This 8 to 10 million ton target resource will justify the establishment of a central mill at a scale capable of treating 1million ton per annum and producing 5,000 tonne of tin metal per annum. Once this mill is established, it is intended that the mine life of the project will be extended beyond the initial 8 to 10 year life, from the nearby known mineralisation held by the Company.

This target resource statement is conceptual in nature as insufficient drilling has been undertaken at this stage and it is uncertain that future drilling will result in the determination of this target.

Three Key Projects map



A major JORC Resource upgrade was announced on 4th April 2009, bringing the **total JORC Resource at the project area to 5.3Mt @ 0.61% Tin (Sn)**. In addition, as the three key projects are tin bearing ironstone skarn formations, iron was also assayed for, and the Company was able to confirm a maiden JORC Resource of iron. The details of the JORC Resource upgrade are shown in the tables below.

For personal use only

REVIEW OF OPERATIONS (Continued)

JORC Resource Upgrade

TIN (Sn)	Measured	Grade	Indicated	Grade	Inferred	Grade	Total	Grade
Gillian	724,700	0.81	846,100	0.84	1,458,800	0.75	3,029,600	0.79
Pinnacles - Wafer	-	-	218,200	0.49	1,133,100	0.39	1,351,300	0.41
Pinnacles - Sniska	-	-	-	-	306,900	0.32	306,900	0.32
Pinnacles - Hartog	-	-	-	-	212,700	0.51	212,700	0.51
Deadmans Gully	-	-	401,500	0.49	-	-	401,500	0.49
TOTAL	724,700	0.8139	1,465,800	0.69	3,111,500	0.56	5,302,000	0.61

IRON (Fe)	Measured	Grade	Indicated	Grade	Inferred	Grade	Total	Grade
Gillian	724,700	31.84	846,100	35.03	1,458,800	27.88	3,029,600	30.82
Pinnacles - Wafer	-	-	218,200	20.21	1,133,100	27.88	1,351,300	16.87
Pinnacles - Sniska	-	-	-	-	306,900	22.90	306,900	22.90
Pinnacles - Hartog	-	-	-	-	212,700	13.75	212,700	13.75
Deadmans Gully	-	-	401,500	34.89	-	-	401,500	34.89
TOTAL	724,700	31.8412	1,465,800	32.78	3,111,500	26.42	5,302,000	26.43

FLUORINE (F)	Measured	Grade	Indicated	Grade	Inferred	Grade	Total	Grade
Pinnacles - Wafer	-	-	-	-	348,300	18.54	348,300	18.54
Pinnacles - Sniska	-	-	-	-	306,900	12.00	306,900	12.00
Pinnacles - Hartog	-	-	-	-	212,700	15.50	212,700	15.50
Pinnacles - Llahsram	-	-	-	-	91,700	13.00	91,700	13.00
TOTAL	-	-	-	-	959,600	15.25	959,600	15.25

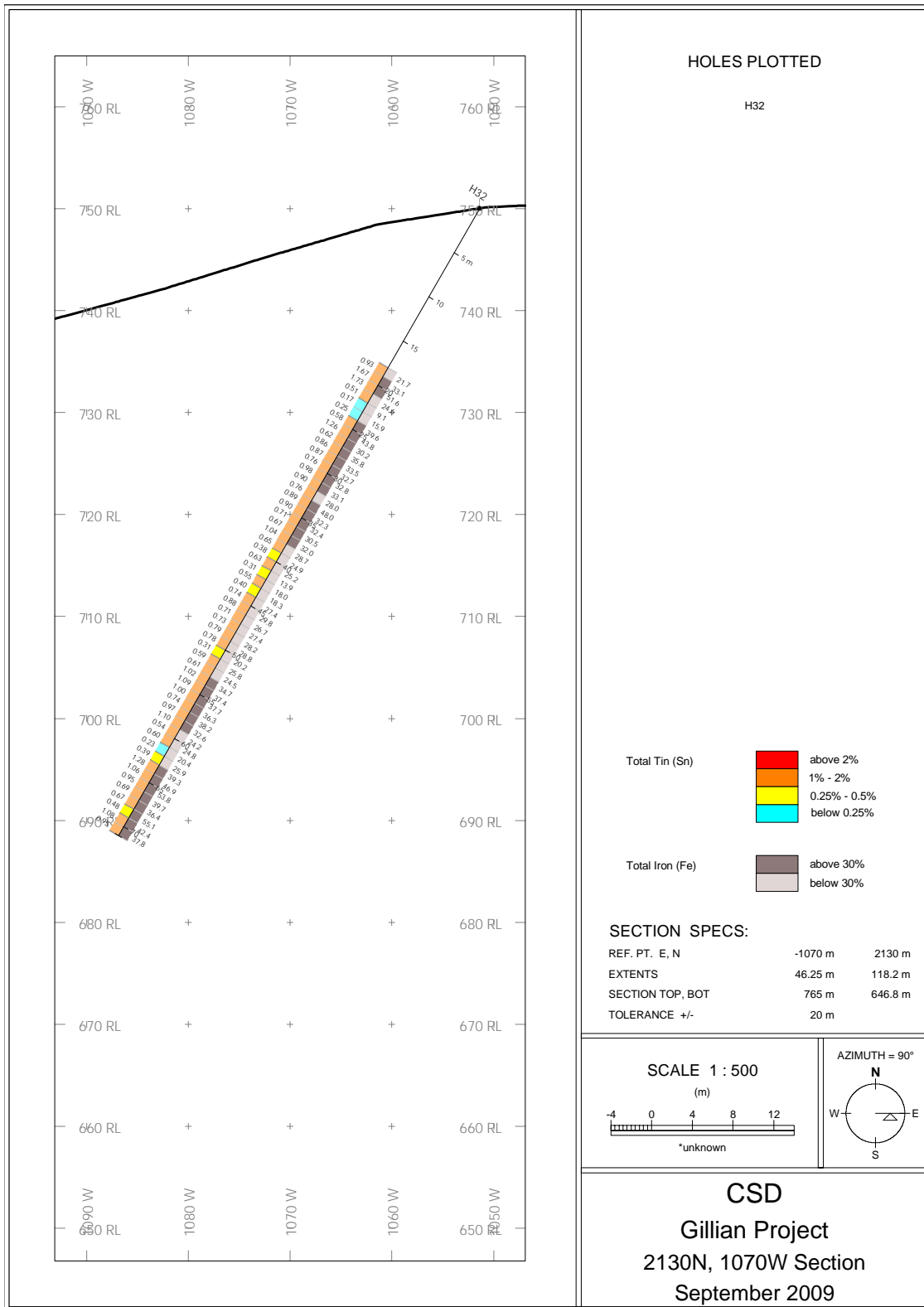
Gillian

The Gillian project is the most advanced of the three key projects with a JORC Resource of 3Mt at 0.8%Sn (total tin), which includes 724,700 at 0.81% in the Measured category. The drilling at the Gillian Project has resulted in some very encouraging intercepts.



REVIEW OF OPERATIONS (Continued)

53m Cross Section at Hole 32

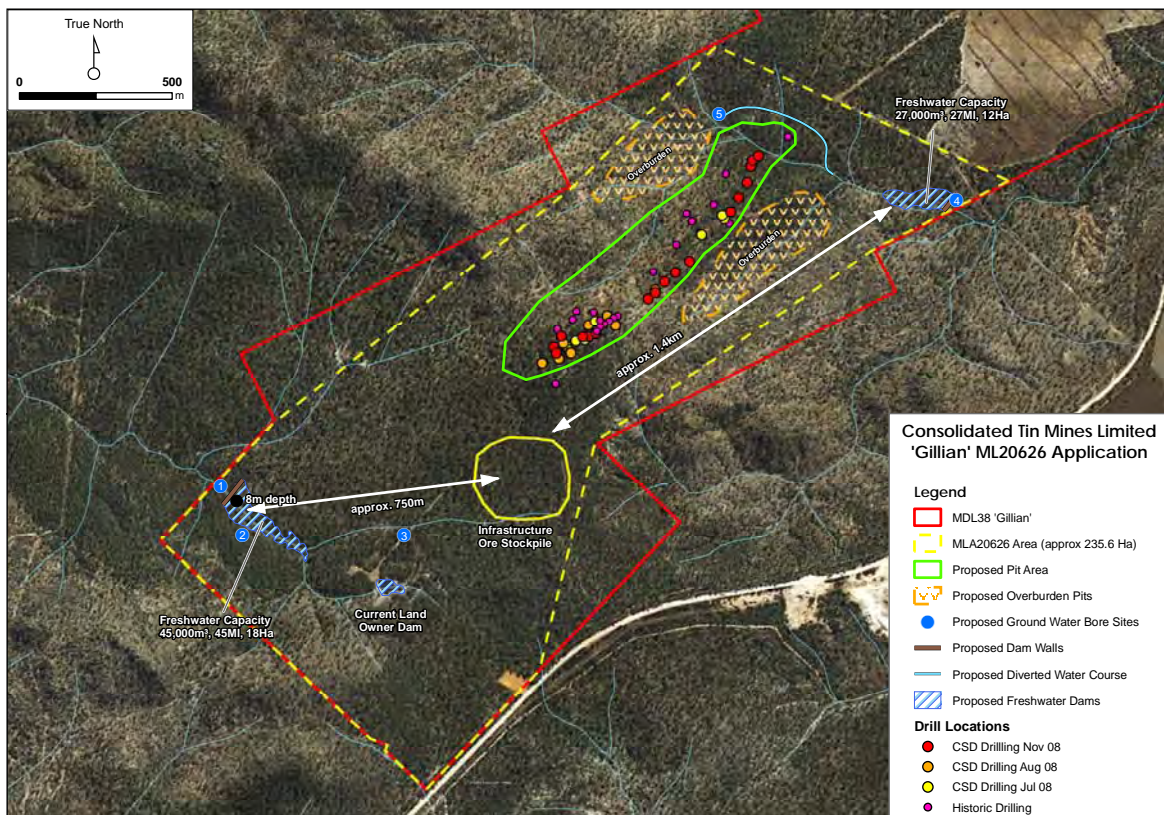


The company lodged a mining lease application over the Gillian Project on 7th August 2009 and has commissioned environmental baseline studies.

For personal use only

REVIEW OF OPERATIONS (Continued)

Gillian Conception Plans



Metallurgy

The Mt Garnet skarn deposits have tin as cassiterite which is of fine size and closely associated with iron oxides. There are also other tin minerals which are acid soluble. They present challenges to recovery methods developed for coarse tin ore, but developments of high gravity centrifuges and improved and selective tin float chemicals have highlighted processing methods to successfully treat the Mt Garnet mineralisation. Test work to date has produced encouraging results (as was announced to the ASX on 30th June 2009).

The Metallurgy Highlights

- At least 30% tin recoverable at a concentrate assaying 45%Sn
- A least 60% tin recoverable at a concentrate assaying 17%Sn
- 22% of iron at project recoverable at grade better than 60%Fe
- Results to date help confirm potential for project to be developed into large tonnage, low mining cost, open pit mining operation
- Metallurgy results indicate higher than expected Sn grade concentrate may be achieved – this translates to lower capital and operating costs and a larger market for end product
- Gillian Project has JORC compliant resource of 3Mt at 0.8%Sn; wider Mt Garnet project area has a total tin JORC resource of 5.3Mt at 0.6%Sn (refer ASX announcement 20/04/2009)

On 24th August 2009 the Company employed senior metallurgist Bob Shelley to the full time position of Company Metallurgist. Mr Shelley is recognised within the tin industry as a pre-eminent tin expert in Australia. With his appointment, the Company is now confident of moving quickly towards developing a commercially viable optimum mineral extraction circuit. The Company will also focus on delivery of commercially viable iron and fluorine as well.

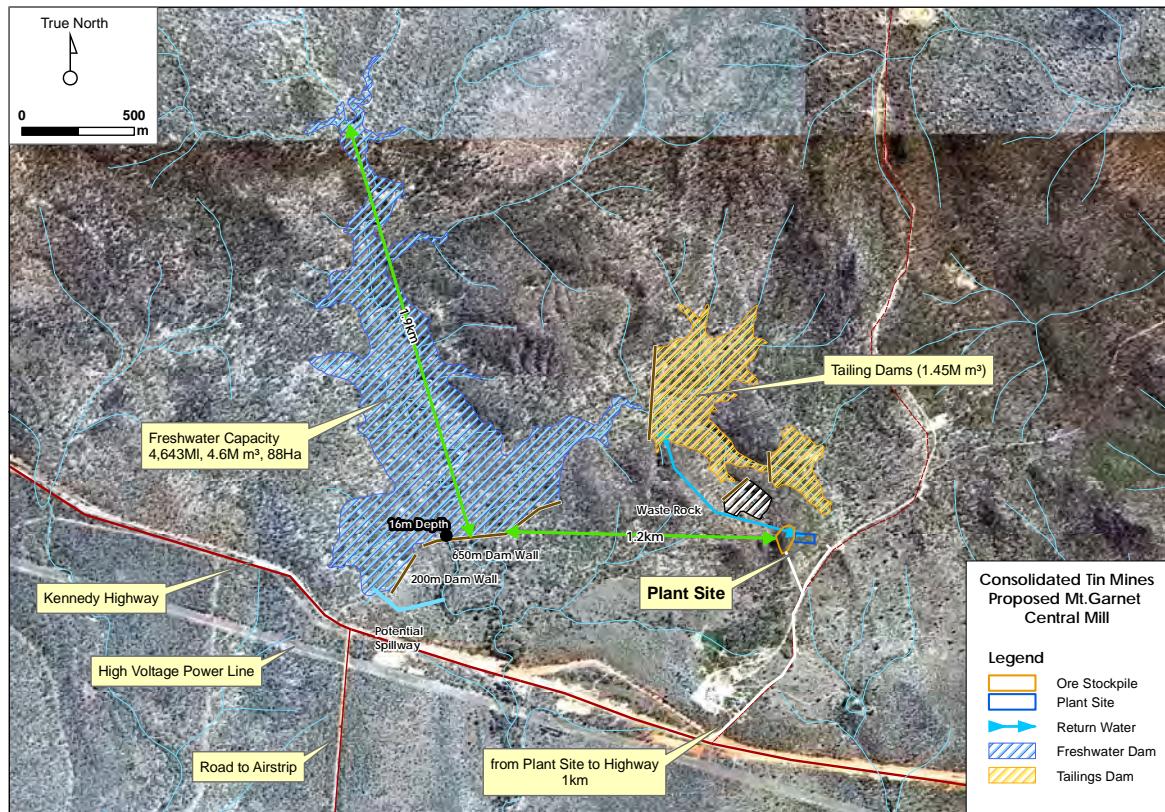
For personal use only

REVIEW OF OPERATIONS (Continued)

Central Mill Concept

The Company has identified an ideal location to establish a central mill. The location is close to the Kennedy Highway with access to high voltage power, as well as proximity to the townships of Mt Garnet and Ravenshoe with all community infrastructures. By agreement with Contin Pty Ltd, EPM 17073 will be transferred to the Company when granted. The Company has developed conceptual plans for this mill site and is working towards progressing the potential of this site.

Central Mill Conceptual Drawing



The Company will continue to develop this site in parallel with the three key projects and ongoing metallurgy and extraction optimisation. The decision on the optimum mineral extraction circuit will come from these metallurgy studies. The Company recognises the central mill will be a high capital expense and the initial mine life will be based on 8 to 10 years at 1mt per annum. The Company believes it will add to its resource base over time, through its ongoing exploration programs in the area.

The Company has commenced high level discussions with potential off take partners to develop project level funding for the mill construction. Further details on the progress of these discussions and negotiations will be announced to the market as they become available.

Alluvial

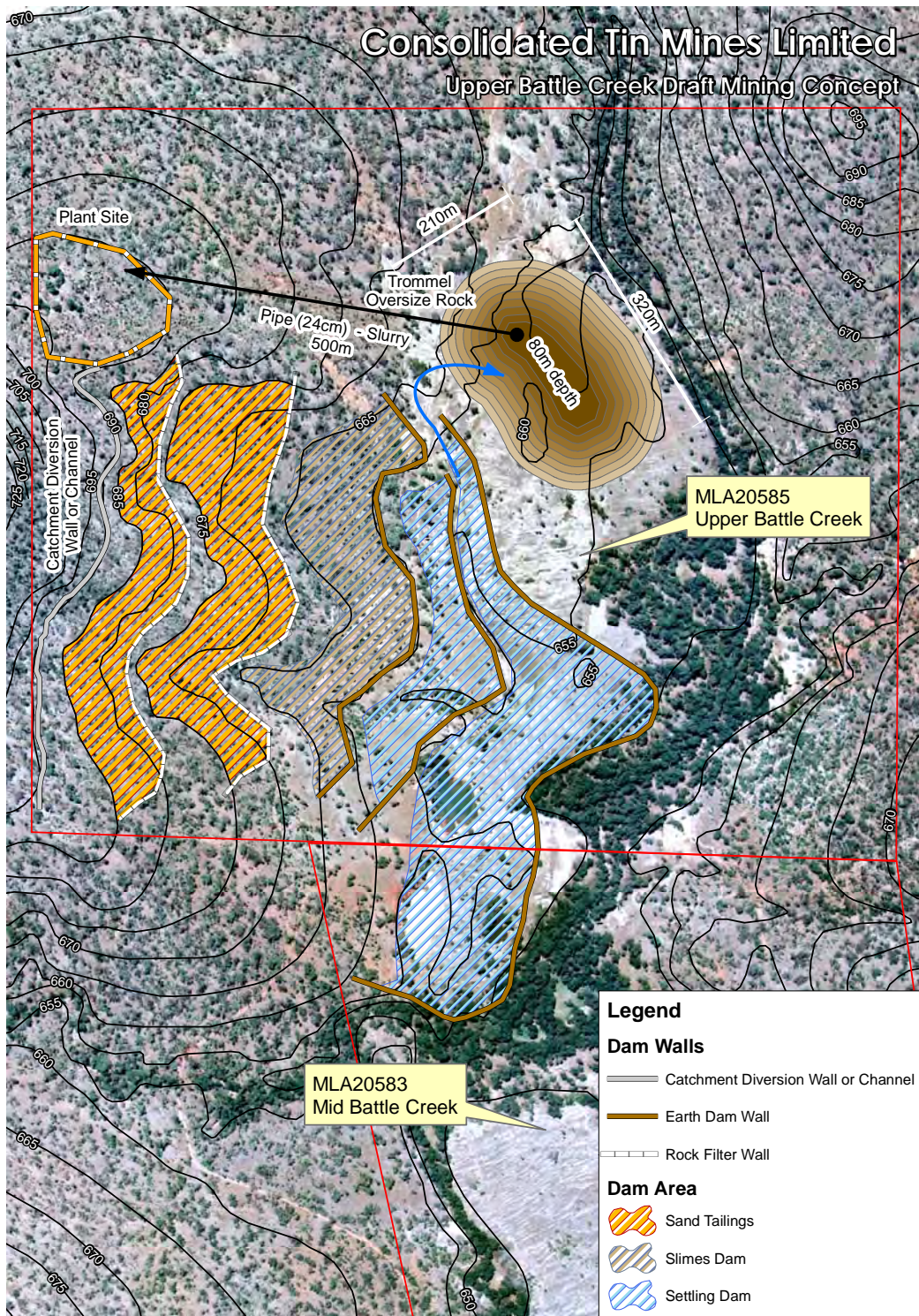
The Company holds a significant portion of the historic Mt Garnet alluvial tin field which yielded a large amount of tin through the 1940s-1980s, recovered by means of large scale bucket dredging. Due to the relatively shallow depth of dredging not all available tin has been mined and alluvial tin resources still remain within the main channel systems. JORC Compliant Resources are contained within the company's alluvial tenements, and other alluvial (non-JORC) mineralisation is also known within company tenements.

The company has selected the Upper Battle Creek deposit as the first alluvial deposit to mine and its goal is to have it in production by mid 2010.

Upper Battle Creek has a current JORC Resource of .683,000bcm at 0.84 kg Sn/bcm.

REVIEW OF OPERATIONS (Continued)

Upper Battle Creek Conceptual Drawing



Upper Battle Creek comprises soft granite that can be mined using alluvial mining methods. This soft granite has been tested to 80 metres, and the plan is to establish the operation as an open cut mine without drill and blast costs. The Company is investigating low cost mining methods such as transporting the ore as a slurry to minimise costs.

The long term intended scale of the alluvial operation is in the vicinity of 1m cubic metres per annum, producing 500t Sn per annum. This target is conceptual in nature as insufficient drilling has been undertaken at this stage and it is uncertain that future drilling will result in the determination of this target.

For personal use only



REVIEW OF OPERATIONS (Continued)

Future Activities

Further drilling will be undertaken at the Gillian Project to upgrade the JORC Resource to a Measured and Indicated category, and to also obtain additional sample material for Metallurgy test work.

Drilling will commence on the Windermere Project when granted.

Metallurgy studies will continue.

Environmental management planning and baseline studies will continue.

The alluvial mining project will be progressed into production.

The information contained in this report that relates to assay results of rock samples and drill chips, to mineral resource estimates and to ore reserve estimates of mineralisation has been compiled by John Sainsbury (BSc, AusIMM). John Sainsbury is a geologist of 30 years experience and has sufficient experience in the type of mineralisation under consideration to be a Competent Person as defined by the Australasian Code for Reporting of Exploration Results, Mineral Resources and Ore Reserves - JORC Code, 2004 Edition. John Sainsbury is an executive director of Consolidated Tin Mines Limited. John Sainsbury has consented to the inclusion of this information in the form and context in which it appears.

For personal use only

CORPORATE GOVERNANCE STATEMENT

INTRODUCTION

The Board supports the establishment and ongoing development of corporate governance framework to ensure that its practices are responsible and meet the needs of shareholders.

The Company officially listed on the Australian Securities Exchange on 26th February 2008 and operates in accordance with the principles of corporate governance as set out by the ASX Corporate Governance Council and as required by the ASX Listing Rules. The Directors have implemented policies and practices which they believe will focus their attention and that of their Senior Executives on accountability, risk management and ethical conduct. The policies were reviewed by the Board on 10 February 2009.

This Statement sets out the corporate governance practices in place as at the date of this report all of which comply with the principles and recommendations of the ASX Corporate Governance Council unless otherwise stated.

Corporate Governance Council Principle 1

Role of the Board of Directors

The Board guides and monitors the business and management of the Company on behalf of shareholders by whom they are elected and to whom they are accountable.

In order to fulfil this role, the Board is responsible for the overall corporate governance of the Company including formulating its strategic direction, setting remuneration and monitoring the performance of Directors and Executives. The Board relies on Senior Executives to assist it in approving and monitoring expenditure, ensuring the integrity of internal controls and management information systems and monitoring financial and other reporting.

The Board has adopted a **Board Charter** which clarifies the respective roles of the Board and senior management and assists in decision making processes, complying with recommendation 1.1 of the ASX Corporate Governance Council. A copy of the board charter is available on the company's website at www.consolidatedtinmines.com.au.

Board processes

The full Board currently holds scheduled meetings and at such other times as may be necessary.

An agenda for the meetings has been determined to ensure certain standing information is addressed and other items which are relevant to reporting deadlines and or regular review are scheduled when appropriate. The agenda is reviewed by the Managing Director.

Evaluation of senior executive performance

Due to the early stage of development of the Company it is difficult for quantitative measures of performance to be established. As the company progresses its projects, the Board intends to establish appropriate evaluation procedures. As such the Company does not comply with recommendation 1.2 of the ASX Corporate Governance Council.

Education

All senior employees and consultants are encouraged to attend professional education courses relevant to their roles.

Corporate Governance Council Principle 2

Board Composition

The Constitution of the Company provides that the number of Directors shall not be less than three. There is no requirement for any shareholding qualification.

The membership of the Board, its activities and composition is subject to periodic review. The criteria for determining the identification and appointment of a suitable candidate for the Board shall include the quality of the individual, background of experience and achievement, compatibility with other Board members, credibility within the scope of activities of the Company, intellectual ability to contribute to Board duties and physical ability to undertake Board duties and responsibilities.

Directors are initially appointed by the Board and are subject to re-election by shareholders at the next general meeting. In any event one third of the Directors are subject to re-election by shareholders at each annual general meeting.

The Board is presently comprised of three members, one Non-Executive and two Executive.

Mr Ralph De Lacey
Chairman - Executive

Mr John Sainsbury
Executive Director

Mr Andrew Kerr
Non-Executive Independent

Directors are expected to bring independent views and judgement to the Board's deliberations. In considering whether or not a Director is independent the Board has regard to the independence criteria set out in recommendation 2.1 of the ASX Corporate Governance Council.

Only one of the three current Directors are considered to satisfy the test of independence as set out in the principles and recommendations, which means that recommendation 2.1 of the ASX Corporate Governance Council is not complied with.

The Chair was independent and the Chair and Chief Executive Officer roles were not exercised by the same individual for the majority of the financial year, and therefore the Company was in compliance with recommendations 2.2 and 2.3 of the Corporate Governance Council. On 26 June 2009 the Company announced the resignation of Mr Peter O'Connor as Independent Non-Executive Chairman, as a result at the end of the reporting period, recommendations 2.2 and 2.3 were not complied with as the Chair and Chief Executive roles were carried out by the same individual who is not considered to be independent due to his significant shareholding.

For personal use only

The Board considers that both its structure and composition are appropriate given the size of the Company and that the interests of the Company and its shareholders are well met at present. The Company appointed Mr De Lacey to fulfil the role of Chair on an interim basis subsequent to the resignation of the prior Chairman.

The skills, experience and expertise of all Directors are set out in the Directors' details section of the Directors' Report on page 14.

The Company does not have a separate nomination committee as recommended in recommendation 2.4 of the Corporate Governance Council. The selection and appointment process for Directors is carried out by the full Board. The Board considers that given the importance of Board composition it is appropriate that all members of the Board participate in such decision making. The Board has adopted a procedure for the selection and appointment of Directors which is available on the Company's website under the Board Composition and Performance Evaluation Policy, adopted by the Board on 10 February 2009.

Evaluation of Board Performance

The Company has a formal process for the evaluation of the performance of the Board, adopted on 10 February 2009 and as such complies with recommendation 2.5 of the Corporate Governance Council. The Board is of the opinion that given the current level of activity of the Company a formal performance review would add little value at present and was not undertaken during the year.

The Board believes that the competitive environment in which the Company operates will effectively provide a measure of the performance of Directors. The Board will be implementing its formal Board review and evaluation process in the 2009/10 financial year.

Education

All Directors are encouraged to attend professional education courses relevant to their roles.

Independent professional advice and access to information

Each Director has the right to access all relevant information in respect to the Company and to make appropriate enquiries of senior management. There is a Board approved procedure for Directors to obtain independent professional advice at the expense of the Company.

Corporate Governance Council Principle 3

Ethical and Responsible Decision Making

The Board actively promotes ethical and responsible decision making.

Code of Conduct

The Board has adopted a Code of Conduct that applies to Directors and key Executives of the Company. This Code addresses expectations for conduct in accordance with legal requirements and agreed ethical standards. A copy of the Code is available on the Company's website.

Securities Trading Policy

The Board is committed to ensuring that the Company, its Directors and Senior Executives comply with their legal obligations as well as conducting their business in a transparent and ethical manner. Directors and Senior Executives (including their immediate family or any entity for which they control investment decisions), must ensure that any trading in securities issued by the Company is undertaken within the framework set out in the **Securities Trading Policy**.

The Policy does not prevent Directors and Senior Executives (including their immediate family or any entity for which they control investment decisions) from participating in any share plan or share offers established or made by the Company, provided that at the time the individual is not in possession of any price sensitive information, not otherwise generally available to all security holders.

The Board has a policy which prohibits trading in the securities of the Company by Directors and Senior Executives and nominated employees prior to consent being obtained from the Chairman or Managing Director.

Corporate Governance Council Principle 4

Integrity in Financial Reporting

The full Board presently fulfils the role of an Audit Committee, as a result the Company does not comply with recommendations 4.1, 4.2 or 4.3 of the Corporate Governance Council. The Board has deemed that the whole Board is the most appropriate composition of Directors to consider financial reporting matters. It is envisaged that in due course an Audit Committee will be formed comprising independent Directors. The current independent Non-Executive Director Mr Andrew Kerr is available for correspondence with the auditors of the Company.

The Board reviews the performance of the external auditors on an annual basis and meets with them during the year to review findings and assist with Board recommendations.

The Board relies on Senior Executives to monitor the internal controls within the Company. Financial performance is monitored on a regular basis by the Managing Director who reports to the Board at the scheduled Board Meetings.

Corporate Governance Council Principle 5

Timely and Balanced Disclosure

The Board is committed to the promotion of investor confidence by providing full and timely information to all security holders and market participants about the Company's activities and to comply with the continuous disclosure requirements contained in the Corporations Act 2001 and the Australian Stock Exchange Listing Rules. The Company has adopted a **Continuous Disclosure Policy** designed to ensure compliance with the ASX Listing Rule Requirements.

Continuous disclosure is discussed at all regular Board meetings and on an ongoing basis the Board ensures that all activities are reviewed with a view to the necessity for disclosure to security holders.

In accordance with ASX Listing Rules the Company Secretary has been appointed as the Company's disclosure officer.

For personal use only

Corporate Governance Council Principle 6
Rights of Security Holders

Communications

The Board supports practices that provide effective and clear communications with security holders and allow security holder participation at general meetings. A formal **Shareholder Communications Policy** has been adopted.

In addition to electronic communication via the ASX web site, the Company publishes all ASX announcements together with all quarterly reports. These documents are available in both hardcopy on request and on the Company web site at www.consolidatedtinmines.com.au

The website provides shareholders and others interested in the Company the opportunity to receive additional information by registering to receive by email press releases and other materials posted to the website.

Shareholders are able to pose questions on the audit process and the financial statements directly to the independent auditor who attends the Company Annual General Meeting for that purpose.

Corporate Governance Council Principle 7

Recognise and Manage Risk

Risk management

The Board is responsible for supervising management's framework of control and accountability systems to enable risk to be assessed and managed. The Board and Senior Executives regularly review, where necessary in conjunction with external professional consultants, procedures in respect of compliance with and the maintenance of its statutory, legal, ethical and environmental obligations.

To assist in the management of risk the Board has adopted a **Risk Management Policy** complying with recommendation 7.1 of the ASX Corporate Governance Council, which is available on the Company's website.

The Board considers that sufficient procedures exist to allow the Board to identify material business risks and that internal controls are effective with respect to day to day management of operations, financial and statutory reporting and environmental and safety issues.

The Board has not requested that a formal risk management and internal control system be implemented and documented by management beyond the adoption of the Company's risk management policy. Accordingly the Board has received no such report on the effectiveness of the Company's management of its material business risks, therefore not complying with recommendation 7.2 of the ASX Corporate Governance Council. The Board intends to implement a formal risk management system as the business activity evolves and will receive reports as to the effectiveness of such controls and policies in future reporting periods.

The Board requires the Managing Director and the Company Secretary to provide a written statement that the financial statements of the Company present a true and fair view, in all material aspects, of the financial position and performance and have been prepared in accordance with Australian accounting standards and the Corporations Act. The Board also requires that the Managing Director and Company Secretary provide sufficient assurance that the declaration is founded on a sound system of risk management and internal control, and that the system is working effectively.

The statements have been received by the Board.

Corporate Governance Council Principle 8

Remunerate Fairly and Responsibly

The full Board determines all compensation arrangements for Directors. It is also responsible for setting performance criteria, performance monitors, share option schemes, superannuation entitlements, retirement and termination entitlements, and professional indemnity and liability insurance cover. The Board does not have a separate Remuneration Committee, therefore not complying with recommendation 8.1 of the ASX Corporate Governance Council. The Board considers that the Company is not currently of a size, nor its affairs of such complexity to justify a separate Remuneration Committee.

The Board ensures that all matters of remuneration will continue to be in accordance with Corporations Act requirements, by ensuring that none of the Directors participates in any deliberations regarding their own remuneration or related issues.

The Executive Directors and Senior Executives receive salary packages which may include performance based components designed to reward and motivate. Non-Executive Directors receive fees agreed on an annual basis by the Board. At present there are no performance based components included in the remuneration packages of either the Board members or other Senior Executives.

For personal use only

DIRECTORS' REPORT

The Directors present their report on Consolidated Tin Mines Limited (the Company) for the year ended 30 June 2009.

Directors

The names and details of the Directors of Consolidated Tin Mines Limited during the financial year and until the date of this report are as follows. Directors were in office for the entire period unless otherwise stated.

Ralph De Lacey MAICD

Executive Chairman (appointed Chairman 26 June 2009, appointed Managing Director 28 September 2007)

Mr De Lacey is an active miner and explorer in North Queensland. He operated successful large scale alluvial gold mining operations on the Palmer River Goldfields during 1993 to 1999. Since then he has been involved in mineral exploration projects throughout North Queensland. He is currently a Director of Delminco Pty Ltd, a uranium exploration company, and Managing Director of NQ Mining Enterprises Pty Ltd, with mining and exploration projects throughout North Queensland.



Mr De Lacey is currently in his eleventh term as President of the influential lobby group, North Queensland Miners Association Inc. and current President of the Queensland Small Miners Council. The author of three published books, Mr De Lacey holds a certificate of Earth Science from James Cook University. Mr De Lacey has not been a Director of any other listed company

in the last 3 years.

John Sainsbury B.Sc (Hons) MAusIMM MAICD

Executive Director (appointed 28 September 2007)



Mr Sainsbury is a geologist of over 30 years experience. He graduated with a BSc (Hons) from Sydney University in 1976 and has been actively involved in the mining industry since. John has worked for small to large public companies and worked in exploration, underground and open-pit operations. He has worked as mine geologist, project geologist and exploration manager and he brings experience in not only technical matters but also the handling of workplace safety and environmental issues to do with exploration and mining.

Mr Sainsbury has run his own geological consulting company for a number of years, and worked in all Australian states and also overseas, and has a particular interest and experience in tin in North Queensland. Mr Sainsbury has not been a Director of any other listed company in the last 3 years.

Andrew Kerr LLB (Hons) B.Sc

Non-Executive Director (appointed 28 September 2007)



Mr Kerr has been a solicitor of the Supreme Court since 1995. He has specialist expertise in Native Title and Cultural Heritage, Planning and Environment and Mining Law.

Mr Kerr has advised Miners, Government and Government owned corporations and landholders in relation to native title, cultural heritage, environmental and other statutory compliance obligations. He has worked on some of the region's major infrastructure projects. Mr Kerr has not been a Director of any other listed company in the last 3 years.

Former Director

Peter O'Connor BCom LLB

Non-Executive Chairman (appointed 15 July 2008, resigned 26 June 2009)

Company Secretary

Kevin Hart

Mr Hart is a Chartered Accountant and was appointed to the position of Company Secretary on 28 September 2007. He has over 20 years experience in accounting and the management and administration of public listed entities in the mining and exploration industry.

He is currently a partner in an advisory firm which specialises in the provision of company secretarial services to ASX listed entities.

For personal use only

Directors' Interests

As at the date of this report the Directors' interests in shares and unlisted options of the Company are as follows:

<i>Director</i>	<i>Directors' Interests in Ordinary Shares</i>	<i>Directors' Interests in Unlisted Options</i>
Ralph De Lacey	9,000,000	4,725,000
John Sainsbury	7,424,426	4,005,000
Andrew Kerr	20,000	10,000

Included in the Directors' interests in unlisted options are the following options, expiring 31 December 2013, that have vested and are able to be exercised.

<i>Director</i>	<i>Number of options</i>	<i>Exercise price</i>
Ralph De Lacey	4,725,000	20 cents
John Sainsbury	4,005,000	20 cents
Andrew Kerr	10,000	20 cents

Directors' Meetings

The number of meetings of the Company's Directors held during the year ended 30 June 2009, whilst each Director was in office, and the numbers of meetings attended by each Director were:

<i>Director</i>	<i>Board of Directors' Meetings Eligible to Attend</i>	<i>Attended</i>
Peter O' Connor	13	12
Ralph De Lacey	13	13
John Sainsbury	13	13
Andrew Kerr	13	12

Principal Activities

The principal activities of the Company during the financial year consisted of tin exploration and development in Queensland.

There were no significant changes in these activities during the financial year since successfully listing.

Results of Operations

The net loss after income tax for the financial year was \$505,237. (2008: \$335,535).

Dividends

No dividend has been paid since the end of the previous financial year and no dividend is recommended for the current year.

Review of Activities

Operations

The past year has seen the Company maintain focus on its three key project areas of Gillian, Pinnacles and Windermere (Deadmans Gully being the southern extent) in the Herberton Tin Field, near Cairns in far north Queensland.

A major JORC Resource upgrade was announced on 4th April 2009, bringing the total JORC Resource at the project area to 5.3Mt @ 0.61% Tin (Sn).

The Company has developed conceptual plans for a central mill site and is working towards progressing the potential of this site. The Company has commenced high level discussions with potential off take partners to develop project level funding for the mill construction.

The company has selected the Upper Battle Creek deposit as the first alluvial deposit to mine and its goal is to have it in production by mid 2010.

A more detailed review of the Company's operations is set out in the section titled "Review of Operations" in this Annual Report.

Financial Position

At the end of the financial year the Company had \$1,239,031 (2008: \$2,725,606) in cash and at call deposits. Capitalised mineral exploration and evaluation expenditure was \$1,655,570 (2008: \$522,355).

Expenditure on exploration and acquisition of tenements during the year was \$1,133,215.

For personal use only

Significant Changes in the State of Affairs

There were no significant changes in the state of affairs of the Company during the financial year.

Options Over Unissued Capital

Listed Options

During the financial year the Company granted 800,000 unlisted options over unissued shares to employees of the Company. No ordinary shares have been issued on the exercise of options. During the financial year no options lapsed unexercised.

As at the date of this report unissued ordinary shares of the Company under option are:

<i>Number of Options Granted</i>	<i>Exercise Price</i>	<i>Expiry Date</i>
35,049,000 *	20.0 cents	31 December 2013
400,000 *	12.0 cents	31 March 2011
400,000 **	12.0 cents	31 March 2011

* Options vested upon grant

** Options vest 1 March 2010

The holders of listed options are not entitled to any voting rights nor may they participate in any share issue of the Company until the options are exercised.

Matters Subsequent to the End of the Financial Year

On 27 August 2009 the Company announced the placement of 10 million shares and 10 million listed options to raise \$1 million before costs of the offer. The placement of 3,457,350 shares and 3,457,350 listed options, being tranche 1 of the placement was completed on 4 September 2009. Tranche 2, being the balance of the placement is subject to shareholder approval at a meeting to be convened on 7 October 2009.

Other than the above there has not arisen in the interval between the end of the financial year and the date of this report any item, transaction or event of a material and unusual nature likely, in the opinion of the Directors of the Company to affect substantially the operations of the Company, the results of those operations or the state of affairs of the Company in subsequent financial years.

Likely Developments and Expected Results of Operations

Likely developments in the operations of the Company are included elsewhere in this Annual Report. Disclosure of any further information has not been included in this report because, in the reasonable opinion of the Directors to do so would be likely to prejudice the business activities of the Company and is dependent upon the results of the future exploration and evaluation.

Environmental Regulation and Performance

The Company holds various exploration licences that regulate its exploration activities in Australia. These licences include conditions and regulations with respect to the rehabilitation of areas disturbed during the course of the Company's exploration activities.

At the date of this report no agency has notified the Company of any environmental breaches during the financial year nor are the Directors aware of any environmental breaches.

Remuneration Report (Audited)

Remuneration Policy

Remuneration levels are competitively set to attract and retain appropriately qualified and experienced Directors and Senior Executives. The Board assesses the appropriateness of remuneration packages, given trends in comparative companies both locally and internationally. Remuneration packages comprise fixed remuneration and may include bonuses or equity based remuneration entirely at the discretion of the Board based on the performance of the individual.

At the date of this report the Company has not entered into any agreements with Directors or Senior Executives which include performance based components. As such there is no relationship between the Company's financial results, market price of its equity securities, dividends declared or paid during the financial period, or other capital returns to shareholders to the remuneration paid to Directors. The Board considers that the performance of Directors at the current stage of the Company's development is measurable by physical results of exploration and the focus has been to secure the services of Directors at this stage. No options were issued to Directors or senior executives during the financial year in respect of remuneration.

Remuneration Report (Audited) (continued)

Details of Remuneration for Directors and Executive Officers

During the year there were no other Senior Executives which were employed by the Company for whom disclosure is required. There were only two executive directors or officers of the company during the reporting period. Details of the remuneration of each Director of the Company are as follows:

		Short Term		Post	Share	Total
		Base Emolument	Other Benefits	Employment Superannuation Contributions	Based Payments Value of Options	
		\$	\$	\$	\$	\$
Directors*						
R De Lacey	2009	150,000	-	13,500	-	163,500
	2008	50,000	-	4,500	-	54,500
J Sainsbury (i)	2009	163,500	-	-	-	163,500
	2008	54,500	-	-	-	54,500
A Kerr	2009	35,000	-	3,150	-	38,150
	2008	11,667	-	1,050	-	12,717
P O'Connor	2009	38,051	-	3,425	-	41,476
	2008	-	-	-	-	-
R Wynn	2009	-	-	-	-	-
	2008	6,667	-	600	-	7,267
Total	2009	386,551	-	20,075	-	406,626
	2008	122,834	-	6,150	-	128,984

(i) During the financial year the Company incurred expenses of \$163,500 (2008: \$54,500) with John Sainsbury Consultants Pty Ltd, a company associated with Mr Sainsbury, in respect of consultancy services.

* Details of directors' appointment and resignation dates, and executive/non-executive status are disclosed at the beginning of this directors' report.

Service Agreements

The Company has the following service agreements with Key Management Personnel:

An employment agreement with Ralph De Lacey dated 1 December 2007, for Managing Director services from Mr De Lacey which has a fixed term of 24 months, commencing 26 February 2008, the date the Company listed on the ASX. The Company will pay Mr De Lacey \$150,000 plus statutory superannuation per annum. The Company may terminate the contract subject to a 3 month notice period plus an additional payment equivalent to 9 months salary.

Unlisted Options

Unlisted Options provided as remuneration and shares issued on exercise of such options

No options were issued to Directors or other senior executives as remuneration during the reporting period.

Additional Information

Company performance

The table below shows the performance of the Company as measured by the increase in its share price and change in market capitalisation over the two financial periods since registration.

	30 June 2009	30 June 2008 (period)
A\$ per share	\$0.04	\$0.11
A\$ Market Capitalisation	\$1,843,920	\$5,070,780
A\$ Loss for period	\$(505,237)	\$(335,535)

End of Audited Remuneration Report



Officers' Indemnities and Insurance

During the year the Company paid an insurance premium to insure certain officers of the Company. The officers of the Company covered by the insurance policy include the Directors and the Company Secretary named in this report.

The Directors and Officers Liability insurance provides cover against all costs and expenses that may be incurred in defending civil or criminal proceedings that fall within the scope of the indemnity and that may be brought against the officers in their capacity as officers of the Company. The insurance policy does not contain details of the premium paid in respect of individual officers of the Company. Disclosure of the nature of the liability cover and the amount of the premium is subject to a confidentiality clause under the insurance policy.

The Company has not entered into any agreement to indemnify any auditor of the Company.

Proceedings on Behalf of the Company

No person has applied to the Court under section 237 of the Corporations Act 2001 for leave to bring proceedings on behalf of the Company, or to intervene in any proceedings to which the Company is a party, for the purpose of taking responsibility on behalf of the Company for all or part of those proceedings.

No proceedings have been brought or intervened in on behalf of the Company with leave of the Court under section 237 of the Corporations Act 2001.

Corporate Governance

The Directors recognise the need for the highest standards of corporate behaviour and accountability, and the Company's Corporate Governance Statement is contained in the annual report.

Non-audit Services and Auditor's Independence Declaration

During the 2009 financial year BDO Kendalls (NTH QLD), the Company's auditor, has not provided any non-audit services in addition to their statutory duties, other than disclosed below:

	2009 \$	2008 \$
Independent Accountants Report to IPO prospectus provided by a related practice of the auditor	-	9,000
Taxation and other services	3,900	-
Total fees for non-audit services	<u>3,900</u>	<u>9,000</u>

The directors are satisfied that the provision of non-audit services during the year, by the auditor (or by another person or firm on behalf of the auditor) is compatible with the general standard of independence of auditors imposed by the Corporations Act 2001. The directors have considered the nature and value of the non-audit services provided by the related practice of the auditor and do not consider the provision of the services to compromise the principles of auditor independence as set out in APES 110 *Code of Ethics for Professional Accountants*.

Auditor's Independence Declaration

A copy of the Auditor's Independence Declaration as required under Section 307C of the Corporations Act is set out on page 19.

This report is made in accordance with a resolution of the Directors.

DATED at Cairns this 18th day of September 2009.

Ralph De Lacey
Executive Chairman

For personal use only

AUDITOR'S INDEPENDENCE DECLARATION



BDO Kendall's (NTH QLD)
Cnr Aplin & Sheridan Streets
Cairns QLD 4870
PO Box 6771, Cairns QLD 4870
Phone 61 7 4046 0000
Fax 61 7 4051 3484
info.cairns@bdo.com.au
www.bdo.com.au

ABN 31 164 696 648

18 September 2009

The Directors
Consolidated Tin Mines Ltd
395 Lake Street
CAIRNS NORTH QLD 4870

Dear Sirs

DECLARATION OF INDEPENDENCE BY GREG MITCHELL TO THE DIRECTORS OF CONSOLIDATED TIN MINES LIMITED

As lead auditor of Consolidated Tin Mines Limited for the year ended 30 June 2009, I declare that, to the best of my knowledge and belief, there have been no contraventions of:

- the auditor independence requirements of the Corporations Act 2001 in relation to the audit; and
- any applicable code of professional conduct in relation to the audit.

Greg Mitchell
Director

BDO Kendall's (Nth Qld)
Chartered Accountants

Cairns, 18 September 2009

BDO Kendall's is a national association of separate partnerships and entities. Liability limited by a scheme approved under Professional Standards Legislation

For personal use only

INCOME STATEMENT

For the financial period ended 30th of June 2009

	Note	Period Ended 30 June 2009 \$	Period Ended 30 June 2008 \$
Revenue	5	126,418	71,867
Other income	5	-	70
Total revenue and other income		126,418	71,937
Depreciation and amortisation expenses	6	(22,215)	(5,682)
Marketing expenses		(49,652)	(15,162)
Occupancy expenses		(16,650)	(10,756)
Administrative expenses		(174,879)	(247,405)
Employee expenses	6	(212,059)	(74,485)
Corporate and other expenses		(156,200)	(53,982)
Loss before income tax		(505,237)	(335,535)
Income tax (expense)/benefit	7	-	-
Loss for the period	17	(505,237)	(335,535)
Earnings per share for loss attributable to the ordinary equity holders of the company.		Cents	Cents
Basic loss per share	27	(1.1)	(1.2)
Diluted loss per share	27	(1.1)	(1.2)

The above income statement should be read in conjunction with the accompanying notes.

For personal use only

BALANCE SHEET

As at 30th of June 2009

	Note	As at 30 June 2009 \$	As at 30 June 2008 \$
ASSETS			
Current assets			
Cash and cash equivalents	8	1,239,031	2,725,606
Trade and other receivables	9	54,293	134,167
Total current assets		1,293,324	2,859,773
Non-current assets			
Property, plant and equipment	10	222,183	227,564
Exploration and evaluation assets	11	1,655,570	522,355
Bonds and deposits	12	7,500	61,000
Total non-current assets		1,885,253	810,919
Total assets		3,178,577	3,670,692
LIABILITIES			
Current liabilities			
Trade and other payables	13	145,704	149,637
Employee liabilities	14	14,085	5,423
Total current liabilities		159,789	155,060
Total liabilities		159,789	155,060
Net assets		3,018,788	3,515,632
EQUITY			
Contributed equity	15	3,691,167	3,691,167
Accumulated losses	17	(840,772)	(335,535)
Equity compensation reserve	17	168,393	160,000
Total equity		3,018,788	3,515,632

The above balance sheet should be read in conjunction with the accompanying notes.

For personal use only

STATEMENT OF CHANGES IN EQUITY

For the financial period ended 30th of June 2009

	Note	Period Ended 30 June 2009 \$	Period Ended 30 June 2008 \$
Total equity at the beginning of the period		3,515,632	-
Net (expense)/income recognised directly in equity		-	-
Loss for the period	17	(505,237)	(335,535)
Total recognised income and expense for the period		(505,237)	(335,535)
Transactions with equity holders in their capacity as equity holders:			
Contributions of equity	15	-	4,321,601
Transaction costs of equity issued	15	-	(630,434)
Movement in equity compensation reserve	17	8,393	160,000
Total equity at the end of the financial year		3,018,788	3,515,632

The above statement of changes in equity should be read in conjunction with the accompanying notes.

For personal use only

CASH FLOW STATEMENT

For the financial period ended 30th of June 2009

	Note	Period Ended 30 June 2009 \$	Period Ended 30 June 2008 \$
Cash flows from operating activities			
Interest received		176,194	8,984
Payments to suppliers and employees		(495,103)	(200,611)
Net cash used in operating activities	26	(318,909)	(191,627)
Cash flows from investing activities			
Payments for property, plant and equipment		(20,059)	(236,879)
Payments to acquire tenements		-	(250,000)
Exploration expenditure		(1,201,107)	(216,747)
Proceeds from security deposits		53,500	-
Payments for security deposits		-	(61,000)
Net cash used in investing activities		(1,167,666)	(764,626)
Cash flows from financing activities			
Proceeds from the issue of shares		-	4,319,602
Payments for transaction costs relating to share issues		-	(637,743)
Net cash from financing activities		-	3,681,859
Net increase in cash and cash equivalents		(1,486,575)	2,725,606
Cash and cash equivalents at the beginning of the period	8	2,725,606	-
Cash and cash equivalents at the end of the financial year	8	1,239,031	2,725,606

The above cash flow statement should be read in conjunction with the accompanying notes.

For personal use only

NOTES TO THE FINANCIAL STATEMENTS

For the financial period ended 30th of June 2009

Note 1 Corporation information and summary of significant accounting policies

Consolidated Tin Mines Limited is a company limited by shares incorporated and domiciled in Australia whose shares are publicly traded on the Australian Securities Exchange.

The principal accounting policies adopted in the preparation of the financial report are set out below. These policies have been consistently applied to all the years presented, unless otherwise stated. The financial report includes separate financial statements for Consolidated Tin Mines Limited as an individual entity ("Company").

The financial report of Consolidated Tin Mines Limited (the Company) was authorised for issue in accordance with a resolution of Directors on 18th September 2009.

Basis of preparation

This general purpose financial report has been prepared in accordance with Australian Accounting Standards (which include Australian equivalents to International Financial Reporting Standards (AIFRS)), other authoritative pronouncements of the Australian Accounting Standards Board (AASB), including AASB and Urgent Issues Group Interpretations and the Corporation Act 2001.

The financial report is presented in Australian dollars and all values are rounded to the nearest dollar.

Going concern basis for preparation of financial statements

The financial statements have been prepared on the going concern basis which contemplates the continuity of normal business activities and the realisation of assets and discharge of liabilities in the normal course of business. The ability of the Company to continue to adopt the going concern assumption will depend on future successful capital raisings, the successful exploration and subsequent exploitation of the Company's tenements and/or sale of non-core assets. Should the Company not be successful in raising additional funding by capital raisings or other alternative funding arrangements fail to eventuate, there is uncertainty as to whether the Company will be able to continue as a going concern. If the Company is unable to continue as a going concern, it will be required to realise its assets and extinguish its liabilities other than in the normal course of business and at amounts that may be different to those stated in the final report.

The directors are cognisant of the fact that future exploration and administration activities are constrained by available cash assets, and believe that the current cash reserves of the Company are sufficient to fund forecast exploration.

The Directors are confident of securing funds if and when necessary to meet the Company's obligations as and when they fall due, and consider the adoption of the Going Concern basis to be appropriate in the preparation of these financial statements.

Statement of Compliance

The financial report also complies with International Financial Reporting Standards (IFRS).

Early adoption of standards

The following standards, amendments to standards and interpretations have been identified as those which may impact the Company in the period of initial application. They are available for early adoption at 30 June 2009, but have not been applied in preparing this financial report.

Reference	Title	Summary	Application date of standard	Application date for Company
AASB Int. 17 and AASB 2008-13	Distributions of Non-cash Assets to Owners and consequential amendments to other Australian Accounting Standards	The Interpretation outlines how an entity should measure distributions of assets, other than cash, as a dividend to its owners acting in their capacity as owners. This applies to transactions commonly referred to as spin-offs, split offs or demergers and in-specie distributions.	1 July 2009	1 July 2009
AASB 8 and AASB 2007-3	Operating Segments and consequential amendments to other Australian Accounting Standards	New standard replacing AASB 114 <i>Segment Reporting</i> , which adopts a management reporting approach to segment reporting.	1 January 2009	1 July 2009

For personal use only

Reference	Title	Summary	Application date of standard	Application date for Company
AASB 123 (Revised) and AASB 2007-6	Borrowing Costs and consequential amendments to other Australian Accounting Standards	The amendments to AASB 123 require that all borrowing costs associated with a qualifying asset be capitalised.	1 January 2009	1 July 2009
AASB 101 (Revised), AASB 2007-8 and AASB 2007-10	Presentation of Financial Statements and consequential amendments to other Australian Accounting Standards	Introduces a statement of comprehensive income. Other revisions include impacts on the presentation of items in the statement of changes in equity, new presentation requirements for restatements or reclassifications of items in the financial statements, changes in the presentation requirements for dividends and changes to the titles of the financial statements.	1 January 2009	1 July 2009
AASB 2008-1	Amendments to Australian Accounting Standard – Share-based Payments: Vesting Conditions and Cancellations	The amendments clarify the definition of 'vesting conditions', introducing the term 'non-vesting conditions' for conditions other than vesting conditions as specifically defined and prescribe the accounting treatment of an award that is effectively cancelled because a non-vesting condition is not satisfied.	1 January 2009	1 July 2009
AASB 2008-2	Amendments to Australian Accounting Standards – Puttable Financial Instruments and Obligations arising on Liquidation	The amendments provide a limited exception to the definition of a liability so as to allow an entity that issues puttable financial instruments with certain specified features, to classify those instruments as equity rather than financial liabilities.	1 January 2009	1 July 2009
AASB 3 (Revised)	Business Combinations	The revised standard introduces a number of changes to the accounting for business combinations, the most significant of which allows entities a choice for each business combination entered into – to measure a non-controlling interest (formerly a minority interest) in the acquiree either at its fair value or at its proportionate interest in the acquiree's net assets. This choice will effectively result in recognising goodwill relating to 100% of the business (applying the fair value option) or recognising goodwill relating to the percentage interest acquired. The changes apply prospectively.	1 July 2009	1 July 2010

For personal use only

Reference	Title	Summary	Application date of standard	Application date for Company
AASB 127 (Revised)	Consolidated and Separate Financial Statements	Under the revised standard, a change in the ownership interest of a subsidiary (that does not result in loss of control) will be accounted for as an equity transaction.	1 July 2009	1 July 2010
AASB 2008-3	Amendments to Australian Accounting Standards arising from AASB 3 and AASB 127	Amending standard issued as a consequence of revisions to AASB 3 and AASB 127.	1 July 2009	1 July 2010
AASB 2008-5 2008-6 2009-2 2009-5	Various Amendments to Australian Accounting Standards arising from the Annual Improvements Project	The improvements project is an annual project that provides a mechanism for making non-urgent, but necessary, amendments to IFRSs. The IASB has separated the amendments into two parts: Part 1 deals with changes the IASB identified resulting in accounting changes; Part II deals with either terminology or editorial amendments that the IASB believes will have minimal impact.	Various	Various
AASB 2008-7	Amendments to Australian Accounting Standards – Cost of an Investment in a Subsidiary, Jointly Controlled Entity or Associate	<p>The main amendments of relevance to Australian entities are those made to AASB 127 deleting the 'cost method' and requiring all dividends from a subsidiary, jointly controlled entity or associate to be recognised in profit or loss in an entity's separate financial statements (i.e., parent company accounts). The distinction between pre- and post-acquisition dividends is no longer required. However, the payment of such dividends requires the entity to consider whether there is an indicator of impairment.</p> <p>AASB 127 has also been amended to effectively allow the cost of an investment in a subsidiary, in limited reorganisations, to be based on the previous carrying amount of the subsidiary (that is, share of equity) rather than its fair value.</p>	1 January 2009	1 July 2009

Reference	Title	Summary	Application date of standard	Application date for Company
Amendments to International Financial Reporting Standards	Amendments to IFRS 7	<p>The amended IFRS 7 requires fair value measurements to be disclosed by the source of inputs, using the following three-level hierarchy:</p> <ul style="list-style-type: none"> - Quoted prices in active markets for identical assets or liabilities (Level 1) - Inputs other than quoted prices included in Level 1 that are observable for the asset or liability, either directly (as prices) or indirectly (derived from prices) (Level 2) - Inputs for the asset or liability that are not based on observable market data (unobservable inputs) (Level 3) 	1 January 2009	1 July 2009
Amendments to International Financial Reporting Standards	Amendments to IFRS 2	The changes relate to the attribution of cash-settled share based payments between different entities within a Group.	1 January 2010	1 July 2010

Historical cost convention

These financial statements have been prepared on a historical cost basis, except for the revaluation of available for sale financial assets and of financial assets and liabilities (including derivative instruments) at fair value through profit and loss.

Critical accounting estimates

The preparation of financial statements in conformity with AIFRS requires the use of certain critical accounting estimates. It also requires management to exercise its judgement in the process of applying the Company's accounting policies. The areas involving a higher degree of judgement or complexity, or areas where assumptions and estimates are significant to the financial statements are disclosed in note 3.

Segment reporting

A business segment is a group of assets and operations engaged in providing products or services that are subject to risks and returns that are different to those of other business segments. A geographical segment is engaged in providing products or services within a particular economic environment and is subject to risks and returns that are different from those of segments operating in other economic environments.

Revenue recognition

Revenue is recognised to the extent that it is probable that the economic benefits will flow to the Company and the revenue can be reliably measured.

i. Interest income

Interest income is recognised as it accrues using the effective interest method. This is a method of calculating the amortised cost of a financial asset and allocating the interest income over the relevant period using the effective interest rate, which is the rate that exactly discounts estimated future cash receipts through the expected life of the financial asset to the net carrying amount of the financial asset.

Income tax

The income tax expense or revenue for the period is the tax payable on the current period's taxable income based on the notional income tax rate for each jurisdiction adjusted by changes in deferred tax assets and liabilities attributable to the temporary differences between the tax bases of assets and liabilities and their carrying amounts in the financial statements, and to unused tax losses.

Deferred tax assets and liabilities are recognised for temporary differences at the tax rates expected to apply when the assets are recovered or liabilities are settled, based on those tax rates which are enacted or substantially enacted for each jurisdiction. The relevant tax rates are applied to the cumulative amounts of deductible and taxable temporary differences to measure the deferred tax asset or liability. An exception is

For personal use only

made for certain temporary differences arising from the initial recognition of an asset or a liability. No deferred tax asset or liability is recognised in relation to those timing differences if they arose in a transaction, other than a business combination, that at the time of the transaction did not affect either accounting profit or taxable profit or loss. In addition, no deferred tax is recognised in respect of goodwill.

Deferred tax assets are recognised for deductible temporary differences and unused tax losses only if it is probable that future taxable amounts will be available to utilise those temporary differences and losses.

The carrying value of deferred tax assets is reviewed at each balance sheet date and reduced to the extent that it is no longer probable that sufficient taxable profit will be available to allow all or part of the deferred tax asset to be realised.

Unrecognised deferred tax assets are reassessed at each balance sheet date and are recognised to the extent that it has become probable that future taxable profit will allow the deferred tax asset to be recovered.

Deferred tax assets and liabilities are offset when there is a legally enforceable right to offset current tax assets and liabilities and when the deferred tax balances relate to the same taxation authority. Current tax assets and liabilities are offset where the entity has a legally enforceable right to offset and intends either to settle on a net basis, or to realise the asset and settle the liability simultaneously.

Current and deferred tax amounts attributable to amounts recognised directly in equity are also recognised directly in equity.

Leases

The determination of whether an arrangement is or contains a lease is based on the substance of the arrangement and requires an assessment of whether the fulfilment of the arrangement is dependent on the use of a specific asset or assets, and the arrangement conveys the right to use the asset.

Leases of fixed assets where substantially all the risks and benefits incidental to the ownership of the asset, but not the legal ownership, at the inception of the lease are transferred to entities in the economic entity are classified as finance leases.

Finance leases are capitalised at inception of the lease at the fair value of the leased property or, if lower, the present value of the minimum lease payments, including any guaranteed residual values. Lease payments are apportioned between this reduction in the lease liability and the finance charge, so as to achieve a constant rate of interest on the remaining balance of the liability. Finance charges are recognised as an expense in the profit and loss.

Capitalised leased assets are depreciated on a straight-line basis over the shorter of the estimated useful life of the asset and the lease term, if there is no reasonable certainty that the Company will obtain ownership of the asset by the end of the term.

Leases are classified as operating leases where substantially all the risks and benefits remain with the lessor. Payments in relation to operating leases are recognised as expenses in the income statement on a straight line basis over the lease term.

Lease incentives under operating leases are recognised in the income statement as an integral part of the total lease expense.

Impairment of assets

The Company assesses at each reporting date whether there is an indication that an asset may be impaired. If any such indication exists, or when annual impairment testing for an asset is required, the Company makes an estimate of the asset's recoverable amount. An asset's recoverable amount is the higher of its fair value less costs to sell and its value in use and is determined for an individual asset, unless the asset does not generate cash inflows that are largely independent of those from other assets or Company of assets and the asset's value in use cannot be estimated to be close to its fair value. In such cases the asset is tested for impairment as part of the cash-generating unit to which it belongs. When the carrying amount of an asset or cash-generating unit exceeds its recoverable amount, the asset or cash-generating unit is considered impaired and is written down to its recoverable amount.

In assessing value in use, the estimated future cash flows are discounted to their present value using a pre-tax discount rate that reflects current market assessments of the time value of money and the risks specific to the asset. Impairment losses relating to continuing operations are recognised in the expense categories consistent with the function of the impaired asset unless the asset is carried at revalued amount (in which case the impairment loss is treated as a revaluation decrease).

An assessment is also made at each reporting date as to whether there is any indication that previously recognised impairment losses may no longer exist or may have decreased. If such indication exists, the recoverable amount is estimated. A previously recognised impairment loss is reversed only if there has been a change in the estimates used to determine the asset's recoverable amount since the last impairment loss was recognised. If that is the case the carrying amount of the asset is increased to its recoverable amount. That increased amount cannot exceed the carrying amount that would have been determined, net of depreciation, had no impairment loss been recognised for the asset in prior years. Such reversal is recognised in profit or loss unless the asset is carried at revalued amount, in which case the reversal is treated as a revaluation increase. After such a reversal the depreciation charge is adjusted in future periods to allocate the asset's revised carrying amount, less any residual value, on a systematic basis over its remaining useful life.

For personal use only

Cash and cash equivalents

For cash flow statement presentation purposes, cash and cash equivalents includes cash on hand, deposits held at call with financial institutions, other short term, highly liquid investments with original maturities of three months or less that are readily convertible to known amounts of cash and which are subject to an insignificant risk of changes in value, and bank overdrafts. Bank overdrafts are shown within borrowings in current liabilities on the balance sheet.

Fair value estimation

A number of the Company's accounting policies and disclosures require the determination of fair value, for both financial and non-financial assets and liabilities. Fair values have been determined for measurement and/or disclosure purposes based on the following methods:

i. *Investments in equity and debt securities*

The fair value of financial assets at fair value through profit or loss, held to maturity investments and available for sale financial assets is determined by reference to their quoted bid price at the reporting date. The fair value of held to maturity investments is determined for disclosure purposes only. For investments with no active market, fair value is determined using valuation techniques. Such techniques include using recent arm's length market transactions, reference to the current market value of another instrument that is substantially the same, discounted cash flow analysis and option pricing models.

Trade and other receivables

The fair value of trade and other receivables, excluding construction work in progress, is estimated as the present value of future cash flows, discounted at the market rate of interest at the reporting date.

Property, plant and equipment

Property, plant and equipment are stated at historical cost less accumulated depreciation and impairment losses. Historical cost includes expenditure that is directly attributable to the acquisition of the assets.

Subsequent costs are included in the asset's carrying amount or recognised as a separate asset, as appropriate, only when it is probable that future economic benefits associated with the item will flow to the Company and the cost of the item can be measured reliably. All other repairs and maintenance are charged to the income statement during the financial period in which they are incurred.

Depreciation of property, plant and equipment is calculated using the written down value method or straight line method to allocate their cost, net of residual values, over their estimated useful lives, as follows:

Buildings	5% straight line
Office equipment and fittings	20% written down value
Motor Vehicles	25% written down value
Site equipment	20% written down value

The asset's residual values and useful lives are reviewed, and adjusted if appropriate, at each balance sheet date.

An asset's carrying amount is written down immediately to its recoverable amount if the asset's carrying amount is greater than its estimated recoverable amount.

An item of property, plant and equipment is derecognised on disposal or when no further future economic benefits are expected from its use or disposal. Any gain or loss arising on derecognition of an asset (calculated as the difference between net disposal proceeds and the carrying amount of the asset) is included in profit and loss in the year the asset is derecognised.

Mineral exploration and evaluation expenditure

Exploration and evaluation expenditure incurred is accumulated in respect of each identifiable area of interest. These costs are only carried forward to the extent that the Company's rights of tenure to that area of interest are current and that the costs are expected to be recouped through the successful development of the area or where activities in the area have not yet reached a stage that permits reasonable assessment of the existence of economically recoverable reserves.

Accumulated costs in relation to an abandoned area are written off in full against profit in the year in which the decision to abandon the area is made.

When production commences, the accumulated costs for the relevant area of interest are amortised over the life of the area according to the rate of depletion of the economically recoverable reserves.

A regular review is undertaken of each area of interest to determine the appropriateness of continuing to carry forward costs in relation to that area of interest.

The Company has adopted AASB6 *Exploration of and Evaluation on Mineral Resources*, being the Australian equivalent to IFRS6, in preparing its financial statements.

For personal use only

Restoration policy

Site restoration costs include the dismantling and removal of mining plant, equipment and building structures, waste removal, and rehabilitation of the site in accordance with clauses of the mining permits. Typically the obligation arises when the asset is installed at the production location. When the liability is initially recorded, the estimated cost is capitalised by increasing the carrying amount of the related mining assets. Over time, the liability is increased for the change in the present value based on the discount rates that reflect the current market assessments and the risks specific to the liability. Additional disturbances or changes in rehabilitation costs will be recognised as additions or changes to the corresponding asset and rehabilitation liability when incurred.

The unwinding of the effect of discounting on the provision is recorded as a finance cost in the income statement. The carrying amount capitalised in mining equipment is depreciated over the life of the related asset.

Costs incurred that relate to an existing condition caused by past operations, and do not have a future economic benefit are expensed as incurred.

Any changes in the estimates for the costs are accounted on a prospective basis. In determining the costs of site restoration, there is uncertainty regarding the nature and extent of the restoration due to community expectations and future legislation. Accordingly the costs have been determined on the basis that the restoration will be completed within one year of abandoning the site.

Trade and other payables

Trade payables and other payables are carried at amortised costs and represent liabilities for goods and services provided to the Company prior to the end of the financial year that are unpaid and arise when the Company becomes obliged to make future payments in respect of the purchase of these goods and services.

The amounts are unsecured and usually paid within 30 days of recognition.

Employee benefits*i. Wages, salaries and annual leave*

Liabilities for wages and salaries, including non-monetary benefits, and annual leave expected to be settled within 12 months of the reporting date are recognised in other payables in respect of employees' services up to the reporting date and are measured at the amounts expected to be paid when the liabilities are settled.

ii. Long service leave

The liability for long service leave is recognised in the provision for employee benefits and measured as the present value of expected future payments to be made in respect of services provided by employees up to the reporting date using the projected unit credit method. Consideration is given to expected future salaries, experience of employee departures and periods of service. Expected future payments are discounted using market yields at the reporting date on national government bonds with terms to maturity and currency that match, as closely as possible, the estimated future cash outflows.

iii. Share based payments

Share based compensation payments are made available to Directors and employees.

The fair value of unlisted options granted is recognised as an employee benefit expense with a corresponding increase in equity. The fair value is measured at grant date and recognised over the period during which the employees become unconditionally entitled to the options.

The fair value at grant date is independently determined using a binomial option pricing model that takes into account the exercise price, the term of the option, the impact of dilution, the share price at grant date and expected price volatility of the underlying share, the expected dividend yield and the risk free rate for the term of the option.

The fair value of the options granted is adjusted to reflect market vesting conditions. Non-market vesting conditions are included in assumptions about the number of options that are expected to become exercisable. At each balance sheet date, the entity revises its estimate of the number of options that are expected to become exercisable. The employee benefit expense recognised each period takes into account the most recent estimate.

Upon the exercise of options, the balance of the share based payments reserve relating to those options is transferred to share capital and the proceeds received, net of any directly attributable transaction costs, are credited to share capital.

No expense is recognised for awards that do not ultimately vest, except for awards where vesting is only conditional upon a market condition.

If the terms of an equity-settled award are modified, as a minimum an expense is recognised as if the terms had not been modified. In addition, an expense is recognised for any modification that increases the total fair value of the share-based payment arrangement, or is otherwise beneficial to the employee, as measured at the date of modification.

For personal use only

If an equity-settled award is cancelled, it is treated as if it had vested on the date of cancellation, and any expense not yet recognised for the award is recognised immediately. However, if a new award is substituted for the cancelled award and designated as a replacement award on the date that is granted, the cancelled and new award are treated as if they were a modification of the original award, as described in the previous paragraph.

The dilutive effect, if any, of outstanding options is reflected as additional share dilution in the computation of earnings per share.

Contributed equity

Ordinary shares are classified as equity. Incremental costs directly attributable to the issue of new shares or options are shown in equity as a deduction, net of tax, from the proceeds.

Earnings per share

i. *Basic earnings per share*

Basic earnings per share is calculated by dividing the earnings attributable to equity holders of the Company, excluding any costs of servicing equity other than dividends, by the weighted average number of ordinary shares outstanding during the financial year, adjusted for bonus elements in ordinary shares issued during the year.

ii. *Diluted earnings per share*

Diluted earnings per share adjusts the figures used in the determination of basic earnings per share to take into account the after income tax effect of interest and other financing costs associated with dilutive potential ordinary shares and the weighted average number of shares assumed to have been issued for no consideration in relation to dilutive potential ordinary shares.

Goods and service tax (GST)

Revenues, expenses and assets are recognised net of the amount of associated GST, unless the GST incurred is not recoverable from the taxation authority. In this case it is recognised as part of the cost of acquisition of the asset or as a part of the expense.

Receivables and payables are stated inclusive of the amount of GST receivable or payable. The net amount of GST recoverable from, or payable to, the taxation authority is included with other receivables or payables in the balance sheet.

Cash flows are presented on a gross basis. The GST components of cash flows arising from investing or financing activities which are recoverable from, or payable to, the taxation authority, are presented as operating cash flows. Commitments and contingencies are disclosed net of the amount of GST recoverable from, or payable to, the taxation authority.

Trade and other receivables

Trade and other receivables are recognised and carried at original invoice amount less any allowance for any uncollectible amounts. An allowance for a doubtful debt is made when there is objective evidence that the Company will not be able to collect the debt. Bad debts are written off when identified.

Investments and other financial assets

Financial assets in the scope of AASB139 Financial Instruments: Recognition and Measurement are classified as either financial assets at fair value through profit or loss, loans and receivables, held-to-maturity investments, or available-for-sale investments, as appropriate. When financial assets are recognised initially, they are measured at fair value, plus in the case of investments not at fair value through profit or loss, directly attributable transaction costs. The Company determines the classification of its financial assets after initial recognition and, when allowed and appropriate, re-evaluates this designation at each financial year-end.

All regular way purchases and sales of financial assets are recognised on the trade date, i.e. the date that the Company commits to purchase the asset. Regular way purchases or sales are purchases or sales of financial assets under contracts that require delivery of the assets within the period established generally by regulation or convention in the marketplace.

Held-to-maturity investments

Non-derivative financial assets with fixed or determinable payments and fixed maturity are classified as held-to-maturity when the Company has the positive intention and ability to hold to maturity. Investments included to be held for an undefined period are not included in this classification.

Investments that are intended to be held-to-maturity, such as bonds, are subsequently measured at amortised cost. This cost is computed as the amount initially recognised minus principal repayments, plus or minus the cumulative amortisation using the effective interest method of any difference between the initially recognised amount and the maturity amount. This calculation includes all fees and points paid or received between parties to the contract that are an integral part of the effective interest rate, transaction costs and all other premiums and discounts. For investments carried at amortised cost, gains and losses are recognised in profit or loss when the investments are derecognised or impaired, as well as through the amortisation process.

For personal use only

Loans and receivables

Loans and receivables are non-derivative financial assets with fixed or determinable payments that are not quoted in an active market. Such assets are carried at amortised cost using the effective interest method. Gains and losses are recognised in profit or loss when the loans and receivables are derecognised or impaired, as well as through the amortisation process.

Provisions

Provisions are recognised when the Company has a legal or constructive obligation, as a result of past events, for which it is probable that an outflow of economic benefits will be required to settle the obligation and that a reliable estimate can be made of the amount of the obligation.

If the effect of the time value of money is material, provisions are discounted using a current pre-tax rate that reflects the risks specific to the liability. When discounting is used, the increase in the provision due to the passage of time is recognised as a borrowing cost.

Impairment of financial assets**Financial assets carried at cost**

If there is objective evidence that an impairment loss has been incurred on an unquoted equity instrument that is not carried at fair value (because its fair value cannot be reliably measured), or on a derivative asset that is linked to and must be settled by delivery of such an unquoted equity instrument, the amount of the loss is measured as the difference between the asset's carrying amount and the present value of estimated future cash flows, discounted at the current market rate of return for a similar financial asset.

Note 2 Financial risk management

The Company has exposure to a variety of risks arising from its use of financial instruments. This note presents information about the Company's exposure to the specific risks, and the policies and processes for measuring and managing those risks. The Board of Directors has the overall responsibility for the risk management framework and has adopted a Risk Management Policy.

a) Credit risk

Credit risk is the risk of financial loss to the Company if a customer or counterparty to a financial instrument fails to meet its contractual obligations, and arises principally from transactions with customers and investments.

i. Trade and other receivables

The Company has no investments and the nature of the business activity of the Company does not result in trading receivables. The receivables that the Company does experience through its normal course of business are short term and the risk of non recovery of receivables is considered to be negligible.

ii. Cash deposits

The Company's primary banker is Bendigo Bank Limited, at balance date all operating accounts and funds held on deposit are with this bank. The Directors believe any risk associated with the use of only one bank is mitigated by their size and reputation. Except for this matter the Company currently has no significant concentrations of credit risk.

ii. Bonds and deposits

The Company has bonds on deposit with Queensland State Government departments in respect of environmental and other exploration and mining related requirements. The Company considers assets held under these bond arrangements to be exposed to minimal credit risk.

b) Liquidity risk

Liquidity risk is the risk that the Company will not be able to meet its financial obligations as they fall due. The Company's approach to managing liquidity is to ensure, as far as possible, that it will always have sufficient liquidity to meet its liabilities when due, under both normal and stressed conditions, without incurring unacceptable losses or risking damage to the Company's reputation.

The Company manages its liquidity risk by monitoring its cash reserves and forecast spending. Management is cognisant of the future demands for liquid finance resources to finance the Company's current and future operations, and consideration is given to the liquid assets available to the Company before commitment is made to future expenditure or investment.

c) Market risk

Market risk is the risk that changes in market prices, such as foreign exchange rates, commodity prices, interest rates and equity prices will affect the Company's income or the value of its holdings of financial instruments. The objective of market risk management is to manage and control market risk exposures within acceptable parameters, while optimising any return.

For personal use only

Note 2 Financial risk management (continued)

Interest rate risk

The Company has significant cash assets which may be susceptible to fluctuations in changes in interest rates. Whilst the Company requires the cash assets to be sufficiently liquid to cover any planned or unforeseen future expenditure, which prevents the cash assets being committed to long term fixed interest arrangements; the Company does mitigate potential interest rate risk by entering into short to medium term fixed interest investments.

The Company does not have any direct contact with foreign exchange or equity risks other than their effect on the general economy.

d) Capital Management

The Company considers its capital to comprise its ordinary share capital net of capital raising costs, equity compensation reserve and accumulated losses.

The Board's policy is to maintain a strong capital base so as to maintain investor, creditor and market confidence and to sustain future development of the business. The Board considers the balance between equity and borrowings before making funding decisions with the aim of maintaining a strong capital base. The Board of directors does not monitor the return on capital as in their opinion it does not reflect the measure of success of an exploring company. The Company does not plan to purchase its own shares on the market, pay or declare dividends to shareholders or make any other capital return, in its current phase as an exploration company.

Refer to Note 15 for the carrying amount of ordinary share capital.

Note 3 Critical accounting estimates and judgements

Estimates and judgements are continually evaluated and are based on historical experience and other factors, including expectations of future events that may have a financial impact on the Company and that are believed to be reasonable under the circumstances.

a) Accounting for capitalised mineral exploration and evaluation expenditure

The Company's accounting policy is stated at 1(j). A regular review is undertaken of each area of interest to determine the reasonableness of the continuing carrying forward of costs in relation to that area of interest.

b) Deferred tax assets

The Company does not recognise its deferred tax assets as it is improbable in the short to medium term that these assets will be realised.

Note 4 Segment information

a) Business segments

The Company is involved in the mineral exploration and resource development sector.

b) Geographical segments

The Company operates in only one geographical segment being Australia.

The financial statements represent the results for, and assets and liabilities of business and geographical segment respectively.

Note 5 Revenue and other income

	Period Ended 30 June 2009 \$	Period Ended 30 June 2008 \$
<i>a) Revenue</i>		
<i>Interest received from financial institutions</i>	126,311	71,867
<i>b) Other income</i>		
<i>Other income</i>	108	70

For personal use only

Note 6 Expenses

	Period Ended 30 June 2009 \$	Period Ended 30 June 2008 \$
<i>Loss before income tax includes the following specific expenses:</i>		
Consultancy fee settled by the issue of options	-	155,000
Depreciation:		
Buildings	5,000	1,250
Office equipment	3,747	968
Motor vehicles	12,597	3,359
Site equipment	871	105
	<u>22,215</u>	<u>5,682</u>
Employee expenses:		
Wages, salaries and fees	176,002	63,157
Superannuation	15,371	5,219
Share based payments expense	8,393	-
Other employee expenses	12,293	6,109
	<u>212,059</u>	<u>74,485</u>

Note 7 Income tax

	Period Ended 30 June 2009 \$	Period Ended 30 June 2008 \$
a) Income tax expense		
<u>Current income tax:</u>		
Current income tax charge (benefit)	(503,027)	(162,978)
Current income tax not recognised	503,027	162,978
<u>Deferred income tax:</u>		
Relating to deductible and taxable temporary differences	280,897	112,608
Deferred income tax benefit not brought to account	(280,897)	(112,608)
Income tax expense reported in the income statement	<u>-</u>	<u>-</u>
b) Reconciliation of income tax expense to prima facie tax payable		
Loss from continuing operations before income tax expense	(505,237)	(335,535)
Tax at the Australian rate of 30%	(151,571)	(100,661)
<u>Tax effect:</u>		
Non-deductible share based payment	2,518	46,500
Non-deductible legal expenses	-	3,791
Net deferred tax benefit not brought to account	149,053	50,370
Tax (benefit)/expense	<u>-</u>	<u>-</u>
c) Amounts recognised directly in equity		
Aggregate current and deferred tax arising in the reporting period and not recognised in net profit or loss but directly debited or credited to equity		
Current tax - credited directly to equity	37,826	37,826
Net deferred tax - debited (credited) directly to equity	(37,826)	(189,131)
Net deferred tax asset not recognised in equity	-	151,305
	<u>-</u>	<u>-</u>

For personal use only

Note 7 Income tax (continued)

	Period Ended 30 June 2009 \$	Period Ended 30 June 2008 \$
d) Deferred tax asset		
Assets		
Revenue losses available to offset against future taxable income	668,096	200,804
Accrued expenses	5,775	-
Employee leave liabilities	4,226	1,627
Trade creditors	30,938	-
Non deductible equity raising costs – recognised in the income statement	1,282	1,710
Non deductible equity raising costs – recognised in equity	113,478	151,305
	<u>823,795</u>	<u>355,446</u>
Liabilities		
Accrued income	(3,954)	(18,887)
Capitalised exploration and evaluation expenditure	(421,191)	(81,227)
Property, plant and equipment	-	(15,832)
	<u>(425,145)</u>	<u>(115,945)</u>
Net deferred tax asset	<u>398,650</u>	<u>239,501</u>
e) Unrecognised deferred tax assets		
Deferred tax assets have not been recognised in respect of the following items:		
Deductible and taxable temporary differences	(269,446)	38,697
Tax losses	668,096	200,804
	<u>398,650</u>	<u>239,501</u>
Deferred tax assets have not been recognised in respect of these items because it is not probable in the short to medium term that these assets will be realised.		

Note 8 Current assets - Cash and cash equivalents

	2009 \$	2008 \$
Cash at bank and in hand	239,031	26,286
Deposits at call	1,000,000	2,699,320
	<u>1,239,031</u>	<u>2,725,606</u>

The carrying amount of cash and cash equivalents represents fair value.

Reconciliation to cash and cash equivalents at the end of the year

The above figures reconciled to cash and cash equivalents at the end of the financial year as shown in the cash flow statement.

	2009 \$	2008 \$
Balances as above	1,239,031	2,725,606
Balance per cash flow statement	<u>1,239,031</u>	<u>2,725,606</u>

Cash at bank and in hand and deposits at call earn interest at floating rates based on daily bank deposit rates and short term fixed rates.

For personal use only

Note 9 Current assets – Other receivables

	2009 \$	2008 \$
<i>a) Receivables</i>		
GST recoverable	32,369	57,345
Accrued income	13,180	62,955
Prepaid expenses	8,744	13,867
	54,293	134,167

See note 18 for details of the fair value, interest rate risk exposure and expected maturity dates of other receivables

Note 10 Non-current assets – Property, plant and equipment

	2009 \$	2008 \$
<i>Land & Buildings</i>		
At cost	171,738	156,320
Accumulated depreciation	(6,250)	(1,250)
	165,488	155,070
<i>Office equipment and fittings</i>		
At cost	19,892	19,438
Accumulated depreciation	(4,715)	(968)
	15,177	18,470
<i>Motor vehicles</i>		
At cost	53,747	53,747
Accumulated depreciation	(15,956)	(3,359)
	37,791	50,388
<i>Site equipment</i>		
At cost	4,703	3,741
Accumulated depreciation	(976)	(105)
	3,727	3,636
	222,183	227,564
Reconciliation		
<i>Land & Buildings</i>		
Carrying amount at start of the period	155,070	-
Additions	15,418	156,320
Depreciation	(5,000)	(1,250)
Carrying amount at end of the period	165,488	155,070
<i>Office equipment and fittings</i>		
Carrying amount at start of the period	18,470	-
Additions	454	19,438
Depreciation	(3,747)	(968)
Carrying amount at end of the period	15,177	18,470
<i>Motor vehicles</i>		
Carrying amount at start of the period	50,388	-
Additions	-	53,747
Depreciation	(12,597)	(3,359)
Carrying amount at end of the period	37,791	50,388
<i>Site equipment</i>		
Carrying amount at start of the period	3,636	-
Additions	962	3,741
Depreciation	(871)	(105)
Carrying amount at end of the period	3,727	3,636
	222,183	227,564

The land and buildings have been pledged as security for environmental bonds.

For personal use only

Note 11 Non-current assets – Exploration and evaluation assets

	2009 \$	2008 \$
<i>In the exploration and evaluation phase</i>		
Cost brought forward	522,355	-
Acquisition of exploration assets		
Cost of tenements vended into IPO	-	1,600
Cost of option over MDL38 – Gillian Project	-	250,000
Exploration expenditure incurred during the period at cost	1,133,215	270,755
Cost carried forward	<u>1,655,570</u>	<u>522,355</u>

No exploration assets have been pledged as security by the Company.

Note 12 Non-current assets – Bonds and deposits

	2009 \$	2008 \$
Bonds and deposits	<u>7,500</u>	<u>61,000</u>

The bonds act as security for environmental bonds over tenements on which the Company has worked or is currently working.

Note 13 Current liabilities – Trade and other payables

	2009 \$	2008 \$
Trade payables and accruals	133,390	75,779
Other payables	<u>12,314</u>	<u>73,858</u>
	<u>145,704</u>	<u>149,637</u>

Trade payables and accruals are non-interest bearing and normally settled on 30 day terms.

Details of the Company's exposure to interest rate and liquidity risks, and fair value in respect of its liabilities are set out in note 18. There are no secured liabilities as at 30 June 2009.

Due to the short term nature of the Company's payables, the carrying amount is assumed to approximate their fair value

Note 14 Current liabilities – Employee liabilities

	2009 \$	2008 \$
Annual leave liability	<u>14,085</u>	<u>5,423</u>

For personal use only

Note 15 Contributed equity

Share capital

	2009		2008	
	No.	\$	No.	\$
Issued share capital – fully paid	46,098,001	3,691,167	46,098,001	3,691,167

Share movements during the period

	Issue price (cents)	2009		2008	
		No.	\$	No.	\$
<i>At the beginning of the period</i>		46,098,001	3,691,167	-	-
<i>Issued on incorporation</i>	100.0	-	-	1	1
<i>Issued to vendors and promoters of the Company prior to the Initial Public Offering (IPO)</i>	0.01	-	-	20,000,000	2,000
<i>Issued to seed investors prior to the IPO</i>	5.0	-	-	6,000,000	300,000
<i>Issued to investors subscribing under the Company's IPO</i>	20.0	-	-	20,098,000	4,019,600
<i>Transfer from equity compensation reserve in respect of options exercised (note 17)</i>	-	-	-	-	-
<i>Less: costs related to shares issued</i>	-	-	-	-	(630,434)
<i>At the end of the year</i>		46,098,001	3,691,167	46,098,001	3,691,167

Ordinary shares

The Company is a public company limited by shares. The Company was incorporated in Perth, Western Australia.

The Company's shares are limited whereby the liability of its members is limited to the amount (if any) unpaid on the shares respectively held by them. Ordinary shares entitle the holder to participate in dividends and the proceeds on winding up of the company in proportion to the number of and amounts paid on the shares held. On a show of hands every holder of ordinary shares present at a meeting in person or by proxy, is entitled to one vote, and upon a poll each share is entitled to one vote.

Option plan

Information relating to options issued by the Company is set out in note 16.

The Company has an incentive option plan open to eligible employees and contractors. Options over unissued shares are issued at the discretion of the Board.

Share-based payments

See note 28 for details of shares issued under share based payments arrangements.

Note 16 Options

The options are granted free of charge and are exercisable at a fixed price in accordance with the terms of the grant.

a) Options issued, granted and lapsed during the year

During the financial year the company granted 800,000 unlisted options over unissued shares as follows:

<i>Number of Options Granted</i>	<i>Exercise Price</i>	<i>Expiry Date</i>
800,000	12.0 cents	31 March 2011

During the year no options over unissued shares were exercised. During the year no options over unissued shares lapsed unexercised.

There is no weighted average share price or fair value of options to report in respect of options exercised.

For personal use only

Note 16 Options (continued)

b) Options on issue at the balance date

The number of options outstanding over unissued ordinary shares at 30 June 2009 is 35,849,000 (2008: 35,049,000). The terms of these options are as follows:

Number of Options Outstanding	Exercise Price	Expiry Date
35,049,000 *	20.0 cents	31 December 2013
400,000 *	12.0 cents	31 March 2011
400,000 **	12.0 cents	31 March 2011

* Options vested upon grant.

** Options vest 1 March 2010

The weighted average contractual life for options outstanding at the end of the reporting period is 53.3 months.

Reconciliation of movement of options over unissued shares during the period including weighted average exercise price (WAEP)

	2009		2008	
	No.	WAEP (cents)	No.	WAEP (cents)
Options outstanding at the start of the period	35,049,000	20.0	-	-
Options granted during the period	800,000	12.0	35,049,000	20.0
Options exercised during the period	-	-	-	-
Options expiring unexercised during the period	-	-	-	-
Options outstanding at the end of the period	35,849,000	19.8	35,049,000	20.0

Basis and assumptions used in the valuation of options

The following options, issued to employees during the year, were valued using the Black-Scholes option valuation methodology, using the following:

Date granted	Number of options granted	Exercise price (cents)	Expiry date	Risk free interest rate used	Volatility applied	Option valuation (cents)
1 March 2009	800,000	12.0	31 March 2011	2.87%	153%	0.0157

The weighted average share price of options granted in the above table is 3.0 cents.

A dividend yield of 0% was incorporated into the above option valuations.

The expected life of the options is based upon historical data and is not necessarily indicative of exercise patterns that may occur. The expected volatility reflects an assumption that the historical volatility is indicative of future trends, which may also not be the actual outcome. No other features of options granted were incorporated into the measurement of fair value.

c) Subsequent to the balance date

No options have been granted or exercised subsequent to the balance date and prior to the date of signing this report.

d) Options issued under share-based payments arrangements

See note 28 for details of options issued by the Company under share-based payments.

For personal use only

Note 17 Reserves and accumulated losses

	2009		2008	
	Accumulated losses \$	Equity compensation reserve (i) \$	Accumulated losses \$	Equity compensation reserve (i) \$
Balance at the start of the reporting period	(335,535)	160,000	-	-
Loss for year	(505,237)	-	(335,535)	-
Recognition of options issued	-	8,393	-	160,000
Transfer to issued capital in respect of options exercised (i)	-	-	-	-
Balance carried forward at 30 June 2009	(840,772)	168,393	(335,535)	160,000

(i) Equity compensation reserve

The equity compensation reserve is used to recognise the fair value of options issued but not exercised. Included in the expense recognised for the period is an amount of \$8,393 in respect of unlisted options issued to employees vesting during the year (2008: \$155,000 in respect of options issued in lieu of consultancy services to be provided by the Lead Manager of the Company's Initial Public Offering).

Note 18 Financial instruments

a) Credit risk

The Directors do not consider that the Company's financial assets are subject to anything more than a negligible level of credit risk, and as such no disclosures are made, note 2(a). Cash is held with a credit worthy high quality Australian financial institution. The carrying amounts disclosed in the fair value table represent the maximum exposure to credit risk for the financial assets.

b) Impairment losses

The Directors do not consider that any of the Company's financial assets are subject to impairment at the reporting date. No impairment expense or reversal of impairment charge has occurred during the reporting period.

c) Liquidity risk

The following are the contractual maturities of financial liabilities, including estimated interest payments and excluding the impact of netting agreements, note 2(b):

2009	Carrying amount	Contractual cash flows	6 months or less	6-12 months	1-2 years	2-5years	More than 5 years
	\$	\$	\$	\$	\$	\$	\$
Trade and other payables	106,141	106,141	106,141	-	-	-	-
	106,141	106,141	106,141	-	-	-	-

2008	Carrying amount	Contractual cash flows	6 months or less	6-12 months	1-2 years	2-5years	More than 5 years
	\$	\$	\$	\$	\$	\$	\$
Trade and other payables	136,596	136,596	136,596	-	-	-	-
	136,596	136,596	136,596	-	-	-	-

Note 18 Financial instruments

d) Interest rate risk

At the reporting date the interest profile of the Company's interest-bearing financial instruments was, note 2(c):

	Carrying amount (\$)	
	2009	2008
Variable rate instruments		
Financial assets	1,239,031	2,725,606

e) Fair value sensitivity analysis for fixed rate investments

The Company does not account for any fixed rate financial assets and liabilities at fair value through profit or loss, and the Company does not designate derivatives as hedging instruments under a fair value hedge accounting model. Therefore a change in interest rates at the reporting date would not affect profit or loss.

f) Cash flow sensitivity analysis for variable rate instruments

A change of 100 basis points in interest rates at the reporting date would have increased/(decreased) equity and profit or loss by the amounts shown below. This analysis assumes that all other variables, in particular foreign currency rates, remain constant.

2009	Profit or loss		Equity	
	100bp increase	100bp decrease	100bp increase	100bp decrease
	\$	\$	\$	\$
Variable rate instruments	12,390	(12,390)	-	-

2008	Profit or loss		Equity	
	100bp increase	100bp decrease	100bp increase	100bp decrease
	\$	\$	\$	\$
Variable rate instruments	27,256	(27,256)	-	-

g) Fair values

i. Fair values versus carrying amounts

The fair values of financial assets and liabilities, together with the carrying amounts shown in the balance sheet are as follows:

	2009		2008	
	Carrying amount \$	Fair value \$	Carrying amount \$	Fair value \$
Cash and cash equivalents	1,239,031	1,239,031	2,725,606	2,725,606
Other receivables (excluding GST receivable and non refundable prepayments)	13,180	13,180	76,822	76,822
Bonds and deposits	7,500	7,500	61,000	61,000
Loans and receivables	1,259,711	1,259,711	2,863,428	2,863,428
Trade and other payables (excluding any tax related payables)	(106,141)	(106,141)	(136,596)	(136,596)
Financial liabilities at amortised cost	(106,141)	(106,141)	(136,596)	(136,596)

Note 19 Dividends

No dividends were paid or proposed during the financial period (2008: NIL).

The Company has no franking credits available as at 30 June 2009 (2008: NIL).

For personal use only

Note 20 Key Management Personnel disclosures

a) Directors

The following persons were Directors of the Company during the financial year:

Non-Executive Chairman

Peter O'Connor (appointed 15 July 2008, resigned 26 June 2009)

Managing Director

Ralph De Lacey

Executive Director

John Sainsbury

Non-Executive Director

Andrew Kerr

There were no other persons having the authority and responsibility for planning, directing and controlling the activities of the Company, directly or indirectly, during the financial year. Other than the appointments stated above, there were no changes of Key Management Personnel between the reporting date and the date the financial report was authorised for issue.

Details of Directors' remuneration are contained in the Audited Remuneration Report in the Directors' Report. A summary of total compensation paid to Key Management Personnel during the year is as follows:

	Key Management Compensation (\$)	
	2009	2008
Short-term employee benefits	386,551	122,834
Post employment benefits	20,075	6,150
	406,626	128,984

b) Equity instrument disclosures relating to Key Management Personnel

i. *Unlisted Options provided as remuneration and shares issued on exercise of such options*

No options have been issued to Key Management Personnel during the reporting period in respect of remuneration or for any other services provided.

ii. *Option holdings*

The numbers of options over ordinary shares in the Company held during the financial year by each Director of the Company and other Key Management Personnel of the Company, including their personally related parties are set out below:

2009	Balance at start of the period	Granted as remuneration during the period	Exercised during the period	Other changes during the period	Balance at the end of the financial year	Vested and exercisable at the end of the financial year
<i>Directors</i>						
P O'Connor *	-	-	-	-	-	-
R De Lacey	4,875,000	-	-	-	4,875,000	4,875,000
J Sainsbury	4,065,000	-	-	25,000	4,090,000	4,090,000
A Kerr	10,000	-	-	-	10,000	10,000

2008	Balance at start of the period	Granted as remuneration during the period	Exercised during the period	Other changes during the period (1)	Balance at the end of the financial year	Vested and exercisable at the end of the financial year
<i>Directors</i>						
R De Lacey	-	-	-	4,875,000	4,875,000	4,875,000
J Sainsbury	-	-	-	4,065,000	4,065,000	4,065,000
A Kerr	-	-	-	10,000	10,000	10,000
R Wynn*	-	-	-	25,000	25,000	25,000
T Pugh*	-	-	-	4,810,000	4,810,000	4,810,000
L Chapman*	-	-	-	200,000	200,000	200,000
P Cummings*	-	-	-	200,000	200,000	200,000

(1) Issued to vendors as part consideration for the transfer of exploration assets, to promoters of the initial public offering and acquired by directors on subscription of shares.

* Former directors

Note 20 Key Management Personnel disclosures (continued)

Equity instrument disclosures relating to Key Management Personnel (continued)

iii. Share holdings

The number of shares in the Company held during the financial year by each Director of the Company and other Key Management Personnel of the Company, including their personally related parties are set out below. There were no shares granted during the reporting period as compensation.

2009 Name	Balance at start of the period	Received during the period on exercise of options	Other changes during the period (')	Balance at the end of the financial year
<i>Directors</i>				
P O'Connor*	-	-	-	-
R De Lacey	9,300,000	-	-	9,300,000
J Sainsbury	7,280,000	-	314,426	7,594,426
A Kerr	20,000	-	-	20,000

2008 Name	Balance at start of the period	Received during the period on exercise of options	Other changes during the period (')	Balance at the end of the financial year
<i>Directors</i>				
R De Lacey	-	-	9,300,000	9,300,000
J Sainsbury	-	-	7,280,000	7,280,000
A Kerr	-	-	20,000	20,000
R Wynn*	-	-	50,000	50,000
T Pugh*	-	-	2,510,000	2,510,000
L Chapman*	-	-	-	-
P Cummings*	-	-	-	-

(1) Issued to vendors as part consideration for the transfer of exploration assets, to promoters of the initial public offering and acquired by directors on subscription of shares.

* Former directors

c) Loans made to Key Management Personnel

No loans were made to any Director or Key Management Personnel or any of their related entities during the reporting period.

d) Other transactions with Key Management Personnel

During the year the Company reimbursed expenses of \$11,859 (2008: \$23,825) to John Sainsbury Consultants Pty Ltd, an entity associated with Director John Sainsbury in respect of exploration related expenses. There is no balance owing to the director related entity as at 30 June 2009.

During the year the Company reimbursed expenses of \$Nil (2008: \$160,878) to NQ Mining Enterprises Pty Ltd, an entity associated with Director Ralph De Lacey exploration related expenses. There is no balance owing to the director related entity as at 30 June 2009.

During the year the Company incurred costs of \$35,777 (2008: \$6,371) in respect of legal costs with Preston Law, a firm of which director Andrew Kerr is a partner. There is no balance owing to the director related entity as at 30 June 2009.

There are no other transactions with key management personnel during the period.

Note 21 Remuneration of auditors

During the 2009 financial year BDO Kendalls (NTH QLD), the Company's auditor, has not provided any non audit services in addition to their statutory duties, other than disclosed below:

	2009 \$	2008 \$
Audit and review of the Company's financial statements	31,000	19,000
Independent Accountants Report to IPO prospectus provided by a related practice of the auditor	-	9,000
Taxation and other services	3,900	-
	34,900	28,000

Note 22 Contingencies

a) Contingent liabilities

There were no material contingent liabilities not provided for in the financial statements of the Company as at 30 June 2009 other than:

i. *Native Title and Aboriginal Heritage*

Native title claims have been made with respect to areas which include tenements in which the Company has an interest. The Company is unable to determine the prospects for success or otherwise of the claims and, in any event, whether or not and to what extent the claims may significantly affect the Company or its projects. Agreement is being or has been reached with various native title claimants in relation to Aboriginal Heritage issues regarding certain areas in which the Company has an interest.

b) Contingent assets

There were no material contingent assets not accounted for in the financial statements of the Company as at 30 June 2009, other than the investigation into a claim against Interwest Group Pty Ltd. This is in respect of the costs recognised to the end of the reporting period under the corporate services consultancy agreement. The proceeds from the claim if successful cannot be quantified at the date of this report.

Note 23 Commitments

a) Future Exploration

The Company has certain obligations to expend minimum amounts on exploration in tenement areas. These obligations may be varied from time to time and are expected to be fulfilled in the normal course of operations of the Company.

The commitments to be undertaken are as follows:

	2009 \$	2008 \$
Payable:		
- not later than 12 months	124,000	164,000
- between 12 months and 5 years	312,129	581,937
- greater than 5 years	-	-
	436,129	745,937

To keep tenements in good standing, work programs should meet certain minimum expenditure requirements. If the minimum expenditure requirements are not met, the Company has the option to negotiate new terms or relinquish the tenements. The Company also has the ability to meet expenditure requirements by joint venture or farm-in agreements.

b) Operating lease commitments

The Company has no commitments under operating leases.

c) Contractual commitments

There are no contractual commitments other than those disclosed below:

An agreement with Interwest Group Pty Ltd to provide corporate services for a period of 3 years from listing on the ASX. The enforceability of this agreement is the subject of legal proceedings which have been initiated by the Company. The amount payable at \$6,250 per month is as follows.

	2009 \$	2008 \$
Within one year	75,000	75,000
Later than one year but not later than five years	50,000	125,000
	125,000	200,000

Note 24 Related party transactions

There were no other related party transactions during the year in addition to the disclosures relating to Key Management Personnel at note 20 (d).

For personal use only

Note 25 Events occurring after the balance sheet date

On 27 August 2009 the Company announced the placement of 10 million shares and 10 million listed options to raise \$1 million before costs of the offer. The placement of 3,457,350 shares and 3,457,350 listed options, being tranche 1 of the placement was completed on 4 September 2009. Tranche 2, being the balance of the placement is subject to shareholder approval at a meeting to be convened on 7 October 2009.

Other than the above there has not arisen in the interval between the end of the financial year and the date of this report any item, transaction or event of a material and unusual nature likely, in the opinion of the Directors of the Company to affect substantially the operations of the Company, the results of those operations or the state of affairs of the Company in subsequent financial years.

Note 26 Reconciliation of loss after tax to net cash outflow from operating activities

	Year Ended 30 June 2009 \$	Period Ended 30 June 2008 \$
Loss after income tax	(505,237)	(335,535)
Depreciation and amortisation	22,215	5,682
Share based payments expense	8,393	160,000
<i>Change in operating assets and liabilities:</i>		
(Increase)/decrease in accrued income	49,776	(62,955)
(Increase)/decrease in receivables	19,899	(41,712)
(Increase)/decrease in prepaid expenses	5,123	(13,867)
Increase/(decrease) in payables	72,260	91,337
Increase/(decrease) in employee liabilities	8,662	5,423
Net cash outflow from operating activities	(318,909)	(191,627)

Non cash financing and investing activities

During the financial year the Company did not enter into any transactions which had material non cash components.

Note 27 Earnings per share

	Year Ended 30 June 2009 Cents	Period Ended 30 June 2008 Cents
<i>a) Basic earnings per share</i>		
Loss attributable to ordinary equity holders of the Company	(1.1)	(1.2)
<i>b) Diluted earnings per share</i>		
Loss attributable to ordinary equity holders of the Company	(1.1)	(1.2)
<i>c) Loss used in calculation of basic and diluted loss per share</i>		
Loss after tax from continuing operations	\$ (505,237)	\$ (335,535)
<i>d) Weighted average number of shares used as the denominator</i>		
Weighted average number of shares used as the denominator in calculating basic and diluted earnings per share	# 46,098,001	# 28,117,633

There are on issue 35,849,000 options at 30 June 2009 (2008: 35,049,000) which are not considered to be dilutive to the reported loss.

Options to acquire ordinary shares granted by the Company and not exercised at the reporting date are considered to be potential ordinary shares and have been included in the determination of diluted earnings per share to the extent to which they are dilutive. The options are not considered to be dilutive and accordingly have not been included in the determination of diluted earnings per share. The options on issue are considered not to have a dilutive effect during the period as the exercise price has exceeded the market value of the Company's ordinary shares throughout the period, making exercise of options unlikely for economic reasons.

Note 28 Share-based payments

During the year the Company made share-based payments to employees in the form of unlisted options granted with various vesting conditions, relating to both reward for prior employment and to act as an incentive to continue engagement with the Company.

Details of the vesting conditions attaching to options granted are as follows:

Date granted	Number of unlisted options granted	Exercise price (cents)	Expiry Date	Vesting Date
1 March 2009	400,000	12 cents	31 March 2011	1 March 2009
1 March 2009	400,000	12 cents	31 March 2011	1 March 2010

See note 16 for details of the option valuation.

During the comparative reporting period the Company made no share-based payments to employees. 4,000,000 options were issued to the lead manager of the Company's IPO as a success fee for listing the Company on the ASX. These options were issued at market value subsequent to listing. See note 17 for the expense recorded in respect of these options issued.

There have been no cancellations or modifications to share-based payment arrangements during the 2009 and 2008 reporting periods.

Note 29 Subsidiary company details and consolidation information

CTM Alluvial Mining Pty Ltd, ACN 137 305 947, a wholly owned subsidiary of Consolidated Tin Mines Limited was registered on 25 May 2009.

During the reporting period the subsidiary company held no assets or liabilities, and there was no trading activity or profit or loss.

The financial results of CTM Alluvial Mining Pty Ltd have not been consolidated into this financial report. There has been no activity or movement in assets and liabilities in respect of the subsidiary company since its incorporation and therefore its results are not material to the financial performance and position of Consolidated TIN Mines Ltd for the year ending 30 June 2009.

Note 30 Corporate Services Agreement Dispute

The Company is involved in a Claim lodged in Cairns Supreme Court, seeking to recover options previously issued to Interwest Group Limited, and to obtain a declaration that the Corporate Services Agreement requiring the Company to pay invoices issued by Interwest Group Pty Ltd under the agreement is unenforceable. An amount of \$109,375 has been recognised in respect of invoices received from Interwest Group Limited in these financial statements as a liability as at 30 June 2009.

Interwest Group Pty Ltd has lodged a counter claim in the proceedings seeking payment of approximately \$225,000, being the total amount payable under the three year agreement from the date of listing, plus interest and costs.

The Company is confident of successfully resisting the counterclaim and prevailing with the relief it seeks in its claim.

For personal use only



DIRECTORS' DECLARATION

In the opinion of the Directors of Consolidated Tin Mines Limited ("the Company")

- (a) The financial statements and notes set out on pages 20 to 46 are in accordance with the Corporations Act 2001, including:
 - (i) complying with Accounting Standards and the Corporations Regulations 2001 and other mandatory professional reporting requirements; and
 - (ii) giving a true and fair view of the financial position of the Company as at 30 June 2009 and of its performance, as represented by the results of its operations, changes in equity and cash flows, for the financial year ended on that date.
- (b) There are reasonable grounds to believe that the Company will be able to pay its debts as and when they become due and payable.
- (c) The remuneration disclosures included on pages 16 to 17 of the directors' report (as part of the audited Remuneration Report) for the year ended 30 June 2009, comply with section 300A of the Corporations Act 2001.

The Directors have been given the declarations required by Section 295A of the Corporations Act 2001 from the Chief Executive Officer and Chief Financial Officer for the financial year ended 30 June 2009.

This declaration is made in accordance with a resolution of the Directors.

On behalf of the Board

Signed at Cairns this 18th day of September 2009.

Ralph De Lacey
Managing Director

For personal use only

INDEPENDENT AUDIT REPORT



BDO Kendalls

BDO Kendalls (NTH QLD)
 Cnr Aplin & Sheridan Streets
 Cairns QLD 4870
 PO Box 6771, Cairns QLD 4870
 Phone 61 7 4046 0000
 Fax 61 7 4051 3484
 info.cairns@bdo.com.au
 www.bdo.com.au

ABN 31 164 696 648

INDEPENDENT AUDITOR'S REPORT

To the members of Consolidated Tin Mines Limited

Report on the Financial Report

We have audited the accompanying financial report of Consolidated Tin Mines Limited, which comprises the balance sheet as at 30 June 2009, and the income statement, statement of changes in equity and cash flow statement for the year ended on that date, a summary of significant accounting policies, other explanatory notes and the directors' declaration.

Directors' Responsibility for the Financial Report

The directors of the company are responsible for the preparation and fair presentation of the financial report in accordance with Australian Accounting Standards (including the Australian Accounting Interpretations) and the *Corporations Act 2001*. This responsibility includes establishing and maintaining internal controls relevant to the preparation and fair presentation of the financial report that is free from material misstatement, whether due to fraud or error; selecting and applying appropriate accounting policies; and making accounting estimates that are reasonable in the circumstances.

Auditor's Responsibility

Our responsibility is to express an opinion on the financial report based on our audit. We conducted our audit in accordance with Australian Auditing Standards. These Auditing Standards require that we comply with relevant ethical requirements relating to audit engagements and plan and perform the audit to obtain reasonable assurance whether the financial report is free from material misstatement.

An audit involves performing procedures to obtain audit evidence about the amounts and disclosures in the financial report. The procedures selected depend on the auditor's judgement, including the assessment of the risks of material misstatement of the financial report, whether due to fraud or error. In making those risk assessments, the auditor considers internal control relevant to the entity's preparation and fair presentation of the financial report in order to design audit procedures that are appropriate in the circumstances, but not for the purpose of expressing an opinion on the effectiveness of the entity's internal control. An audit also includes evaluating the appropriateness of accounting policies used and the reasonableness of accounting estimates made by the directors, as well as evaluating the overall presentation of the financial report.

We believe that the audit evidence we have obtained is sufficient and appropriate to provide a basis for our audit opinion.

Independence

In conducting our audit, we have complied with the independence requirements of the *Corporations Act 2001*.

Auditor's Opinion

In our opinion:

- (a) the financial report of Consolidated Tin Mines Limited is in accordance with the *Corporations Act 2001*, including:
 - (i) giving a true and fair view of the company's financial position as at 30 June 2009 and of its performance for the year ended on that date; and
 - (ii) complying with Australian Accounting Standards (including the Australian Accounting Interpretations) and the *Corporations Regulations 2001*; and

BDO Kendalls is a national association of separate partnerships and entities. Liability limited by a scheme approved under Professional Standards Legislation



- (b) the financial report also complies with International Financial Reporting Standards as disclosed in Note 1.

Significant Uncertainty Regarding Going Concern

Without qualification to the opinion expressed above, we draw attention to the matters set out in Note 1. The financial statements have been prepared on a going concern basis which contemplates the continuity of normal business activities and the realisation of assets and discharge of liabilities in the ordinary course of business. This includes the realisation of capitalised exploration expenditure of \$1,655,570 (30 June 2008: \$522,355) as summarised in Note 11. The ability of the company to maintain continuity of normal business activities, to pay their debts as and when they fall due and to recover the carrying value of their areas of interest and its loan accounts, is dependent upon the ability of the company to successfully raise additional capital and/or the successful exploration and subsequent exploitation of their areas of interest through sale or development.

Report on the Remuneration Report

We have audited the Remuneration Report included in paragraph 12 of the directors' report for the year ended 30 June 2009. The directors of the company are responsible for the preparation and presentation of the Remuneration Report in accordance with section 300A of the *Corporations Act 2001*. Our responsibility is to express an opinion on the Remuneration Report, based on our audit conducted in accordance with Australian Auditing Standards.

Auditor's Opinion

In our opinion, the Remuneration Report of Consolidated Tin Mines Limited for the year ended 30 June 2009, complies with section 300A of the *Corporations Act 2001*.

BDO Kendalls

BDO Kendalls (Nth Qld)

A handwritten signature in blue ink, appearing to read 'G. Mitchell', written over a horizontal line.

Greg Mitchell
Partner

Cairns, 18 September 2009

BDO Kendalls is a national association of separate partnerships and entities. Liability limited by a scheme approved under Professional Standards Legislation

For personal use only

ADDITIONAL INFORMATION

Pursuant to the Listing Requirements of the Australian Stock Exchange Limited, the shareholder information set out below was applicable as at 15th September 2009.

a. Distribution of Equity Securities

Analysis of numbers of security holders by size of holding:

Distribution	Number of shareholders	Number of option holders
1 – 1,000	3	-
1,001 – 5,000	13	101
5,001 – 10,000	106	54
10,001- 100,000	258	222
More than 100,000	52	53
Totals	432	430

There were 16 shareholders holding less than a marketable parcel of ordinary shares.

b. Substantial Shareholders

An extract of the Company's Register of Substantial Shareholders (who hold 5% or more of the issued capital) is set out below:

Shareholder Name	Issued Ordinary Shares	
	Number of shares	Percentage of shares %
Ralph De Lacey	9,000,000	18.16
John Sainsbury Consultants Pty Ltd	7,150,000	14.43
Smiling Sun Pty Ltd	6,500,000	13.12

c. Twenty Largest Shareholders

The names of the twenty largest holders of quoted shares are listed below:

Shareholder Name	Issued Ordinary Shares	
	Number of shares	Percentage of shares %
Ralph De Lacey	8,200,000	16.55
John Sainsbury Consultants Pty Ltd	7,150,000	14.43
ANZ Nom Ltd	4,514,818	9.11
R & M Roget	2,300,000	4.64
T E & F L Pugh	2,000,000	4.04
Smiling Sun Ltd	1,500,000	3.03
Seyyed Mohammad Tabaie	843,327	1.70
Chigwell Pty Ltd	750,000	1.51
De Lacey Super Fund	750,000	1.51
Befavo Pty Ltd	654,524	1.32
Interwest Group Pty Ltd	510,000	1.03
J A & R A Buckley	500,000	1.01
Yew Kwang Ng	500,000	1.01
Frank Bratovich	475,000	0.96
Chetan Enterprises Pty Ltd	440,000	0.89
Jalintta Pty Ltd	420,000	0.85
Waterbeach Inv Pty Ltd	400,000	0.81
Ya Wen Wang	350,000	0.71
J A & R A Buckley	302,800	0.61
Intercorp Pty Ltd	300,000	0.61
Top 20 Total	32,860,469	66.33

For personal use only

d. Twenty Largest Option Holders

The names of the twenty largest holders of options are listed below:

Option Holder Name	Listed Options	
	Number	Percentage Quoted
Ralph De Lacey	4,525,000	11.75
John Sainsbury Consultants Pty Ltd	4,000,000	10.39
Interwest Group Pty Ltd	3,810,000	9.89
C K Locke & Partners Pty Ltd	3,000,000	7.79
R & M Roget	1,150,000	2.99
T E & F L Pugh	1,000,000	2.60
Smiling Sun Pty Ltd	1,000,000	2.60
J A & R A Buckley	962,500	2.50
Concept Development Enterprises Pty Ltd	754,049	1.96
ANZ Nom Ltd	613,000	1.59
Phi Group Pty Ltd	526,670	1.37
Yeo Kian Doo	526,670	1.37
F A & M A Ciccone Pty Ltd	512,500	1.33
Chigwell Pty Ltd	500,000	1.30
Yeo Darryl Wi-Qoc	452,000	1.17
Archfield Holdings Pty Ltd	420,000	1.09
Jalintta Pty Ltd	420,000	1.09
Enrico Mattiaccio	343,000	0.89
Ross Nicholaidis	300,000	0.78
J A & R A Buckley	250,000	0.65
Top 20 Total	25,065,389	65.10

e. Voting Rights

In accordance with the Company's Constitution, voting rights in respect of ordinary shares are on a show of hands whereby each member present in person or by proxy shall have one vote and upon a poll, each share will have one vote.

f. Restricted Securities

There are 22,070,000 ordinary fully paid shares on issue which are subject to escrow agreements. The escrow period ends on 27 February 2010.

There are 19,035,000 options expiring 31 December 2013 on issue which are subject to escrow agreements. The escrow period ends on 27 February 2010.

g. Use of Capital

Pursuant to the requirements of ASX Listing Rule 4.10.19 the Company has used all funds raised from its Initial Public Offer (IPO) in a manner that is consistent with the prospectus and objectives outlined in the IPO document.

For personal use only

SCHEDULE OF MINERAL TENEMENTS

Schedule of Tenements as at 18th September 2009

Registered Holder	Tenement No.	Tenement Name	Area	Interest	Status
Consolidated Tin Mines	EPM 14185	Mt Garnet	298 Sq Km	100%	Granted
	EPM 15708	Nymbool	42 Sq Km	100%	Granted
	EPM 15611	Lynd River	80 Sq Km	100%	Granted
	MDL 38	Gillian	399 Ha	100%	Granted
	MDL 381	Windermere	346.8 Ha	100%	Application
	ML 4069	Nettle Creek	21.2 Ha	100%	Granted
	ML 4073	Nettle Creek	144.6 Ha	100%	Granted
	ML 4074	Nettle Creek	99.2 Ha	100%	Granted
	EPMA 17547	Tate River Extended	122 Sq Km	100%	Application
	EPMA 17548	Petford East	102 Sq Km	100%	Application
	EPMA 17550	Herberton Extended	35 Sq Km	100%	Application
	EPMA 17551	Smiths Creek	51 Sq Km	100%	Application
	EPMA 17623	Mt Garnet West	67 Sq Km	100%	Application
	EPMA 17627	Georgetown West	125 Sq Km	100%	Application
	EPMA 17753	Mt Garnet Nth West	125 Sq Km	100%	Application
	EPMA 17875	Lynd River Extended	10 Sq Km	100%	Application
	EPMA 17917	Smith's Creek Extended	6 Sq Km	100%	Application
	EPMA 18000	Mt Garnet East	29 Sq Km	100%	Application
	EPMA 18118	Bolwarra	227 Sq Km	100%	Application
	MLA 20583	Mid Battle Creek	161 Ha	100%	Application
	MLA 20584	Nettle Creek Extended	299 Ha	100%	Application
	MLA 20585	Upper Battle Creek	107 Ha	100%	Application
	MLA 20615	Leichhardt Creek	72 Ha	100%	Application
MLA20626	Gillian	235.6 Ha	100%	Application	

For personal use only