

ASX/Media Release
23rd January 2009

SIGNIFICANT TIN INTERCEPTS FROM MT GARNET DRILLING PROGRAM

Australian tin exploration company, Consolidated Tin Mines (ASX: CSD) is pleased to announce results from its most recent drilling program at the company's Gillian Project in northern Queensland.

The results come from a drilling program carried out from October to December 2008, which produced significant intercepts of tin mineralisation, and follows previous drill programs in July and August last year. The latest program was designed to test the lateral extent of mineralisation found in the earlier programs.

Summary highlights include:

Hole 75	28-33 metres downhole & 33-42 & 48-50	5 metres @ 0.81%Sn, 35.2%Fe 9 metres @ 0.26%Sn, 27.4%Fe 2 metres @ 1.11%Sn, 26.5%Fe
Hole 76	71-78 metres downhole	7 metres @ 0.44%Sn, 24.7%Fe
Hole 77	60-70 metres downhole	10 metres @ 0.60% Sn, 34.6%Fe
Hole 78	57-62 metres downhole	5 metres @ 0.86%Sn, 38.7%Fe
Hole 80	7-10 metres downhole	3 metres @ 0.81%Sn, 42.4%Fe
Hole 82	14-37 metres downhole	23 metres @ 0.71%Sn, 41.8%Fe
Hole 83	16-41 metres downhole	25 metres @ 1.07%Sn, 48.7%Fe

(See Table 1, attached, for full results).

Results from all three drill programs will be used in defining a JORC resource upgrade at the Gillian Project, which the company will release when all assay results have been received.

The Gillian Project is part of Consolidated Tin's wider Mt Garnet Project area, which is located 200km south west of Cairns in the Herberton Tin Field, one of Australia's premier tin fields. In addition to its tin exploration programs in the area, the company is also exploring iron mineralised rock in the Mt Garnet region.

The company is very pleased with the continuing excellent results from the Gillian project with drilling showing good widths and grades of both tin and iron, which provides a strong degree of confidence for the upcoming resource upgrade.

In addition to the most recent drill program, a drill hole from the August program (Hole 32) was re-entered, as it had previously ended in mineralisation. The full intercept results to date are:

Hole 32	18-71 metres downhole	53 metres @ 0.77%Sn, 31.5%Fe.
----------------	------------------------------	--------------------------------------

These results are from the northern section of the Gillian mineralisation, and over a strike extent of 500 metres (from grid northing's of 2100N to 2600N).

Assay results are being compiled by the fused bead XRF method, and results are total tin (Sn) and total iron (Fe). Assay work was completed by Burnie Research Laboratory.

ENDS

For further information please contact;

Ralph De Lacey
Managing Director
Consolidated Tin Mines
P: 07 4081 0241
M: 0428 163 176
E: ralph@ngmining.com.au
W: www.consolidatedtinmines.com.au

James Moses
Investor Relations and Media Relations
Mandate Corporate
M: 0420 991 574
E: james@mandatecorporate.com.au

The information contained in this report that relates to assay results of rock samples and drill chips, to mineral resource estimates and to ore reserve estimates of mineralisation is based on information compiled by John Sainsbury (BSc, AusIMM) an executive director of Consolidated Tin Mines Limited. John Sainsbury is a geologist of 30 years experience and has sufficient experience in the type of mineralisation under consideration to qualify as a Competent Person as defined by the Australasian Code for Reporting of Exploration Results, Mineral Resources and Ore Reserves - JORC Code, 2004 Edition. John Sainsbury has consented to the inclusion of this information in the form and context in which it appears.

ABOUT CONSOLIDATED TIN MINES LIMITED

Consolidated Tin Mines Limited (CSD) is a junior exploration company with current focus on Tin at Mt Garnet in the lower Herberton tin field in North Queensland.

Short to medium term goals are:

- Further expand resources at Gillian and Deadmans Gully while defining resources of known mineralisation at Pinnacles
- Develop a hard rock mining operation
- Develop an alluvial mining operation
- Explore other known mineralisation within current tenement holding to provide resource expansion

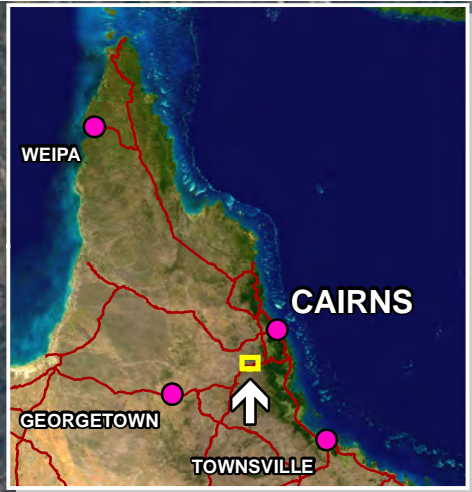
Table 1 – Gillian Drill Locations and Assay Results

Details of drill holes				
Hole No	MGA55 Location	Drill Azimuth (from Mag. North)	Drill Dip	Depth
H32	8040949N, 294062E	325°	60°	71m
H75	8040919N, 294039E	325°	60°	67m
H76	804939N, 294062E	325°	75°	80m
H77	804975N, 294093E	325°	60°	70m
H78	8041006N, 294128E	325°	60°	70m
H80	8041251N, 294335E	325°	60°	25m
H82	8041353N, 294374E	303°	60°	37m
H83	80413372N 294381E	295°	60°	43m

Hole	Intercept (m)	%Sn	%Fe
H32 (Gillian)			
	18 - 19	0.93	21.7
	19 - 20	1.67	33.1
	20 - 21	1.73	51.6
	21 - 22	0.51	24.6
	22 - 23	0.17	9.1
	23 - 24	0.25	15.5
	24 - 25	0.58	40.6
	25 - 26	1.26	43.8
	26 - 27	0.62	30.2
	27 - 28	0.86	35.8
	28 - 29	0.87	33.5
	29 - 30	0.76	32.7
	30 - 31	0.98	32.8
	31 - 32	0.90	33.1
	32 - 33	0.76	28.0
	33 - 34	0.89	48.0
	34 - 35	0.90	32.3
	35 - 36	0.71	32.4
	36 - 37	0.67	30.5
	37 - 38	1.04	32.0
	38 - 39	0.65	28.7
	39 - 40	0.38	24.9
	40 - 41	0.63	25.2
	41 - 42	0.31	13.9
	42 - 43	0.55	18.0
	43 - 44	0.40	18.3
	44 - 45	0.74	27.4
	45 - 46	0.88	29.8
	46 - 47	0.71	26.7
	47 - 48	0.73	27.4
	48 - 49	0.79	28.2
	49 - 50	0.78	28.8
	50 - 51	0.31	20.2
	51 - 52	0.59	25.8
	52 - 53	0.61	24.5
	53 - 54	1.02	34.7
	54 - 55	1.09	37.4
	55 - 56	1.00	37.7
	56 - 57	0.74	36.3
	57 - 58	0.97	38.2
	58 - 59	1.10	32.6
	59 - 60	0.54	24.2
	60 - 61	0.60	24.8
	61 - 62	0.23	20.4
	62 - 63	0.39	25.9
	63 - 64	1.28	39.3
	64 - 65	1.06	46.9
	65 - 66	0.95	53.8
	66 - 67	0.69	39.7
	67 - 68	0.67	36.4
	68 - 69	0.48	55.1
	69 - 70	1.08	42.4
	70 - 71	0.95	37.8

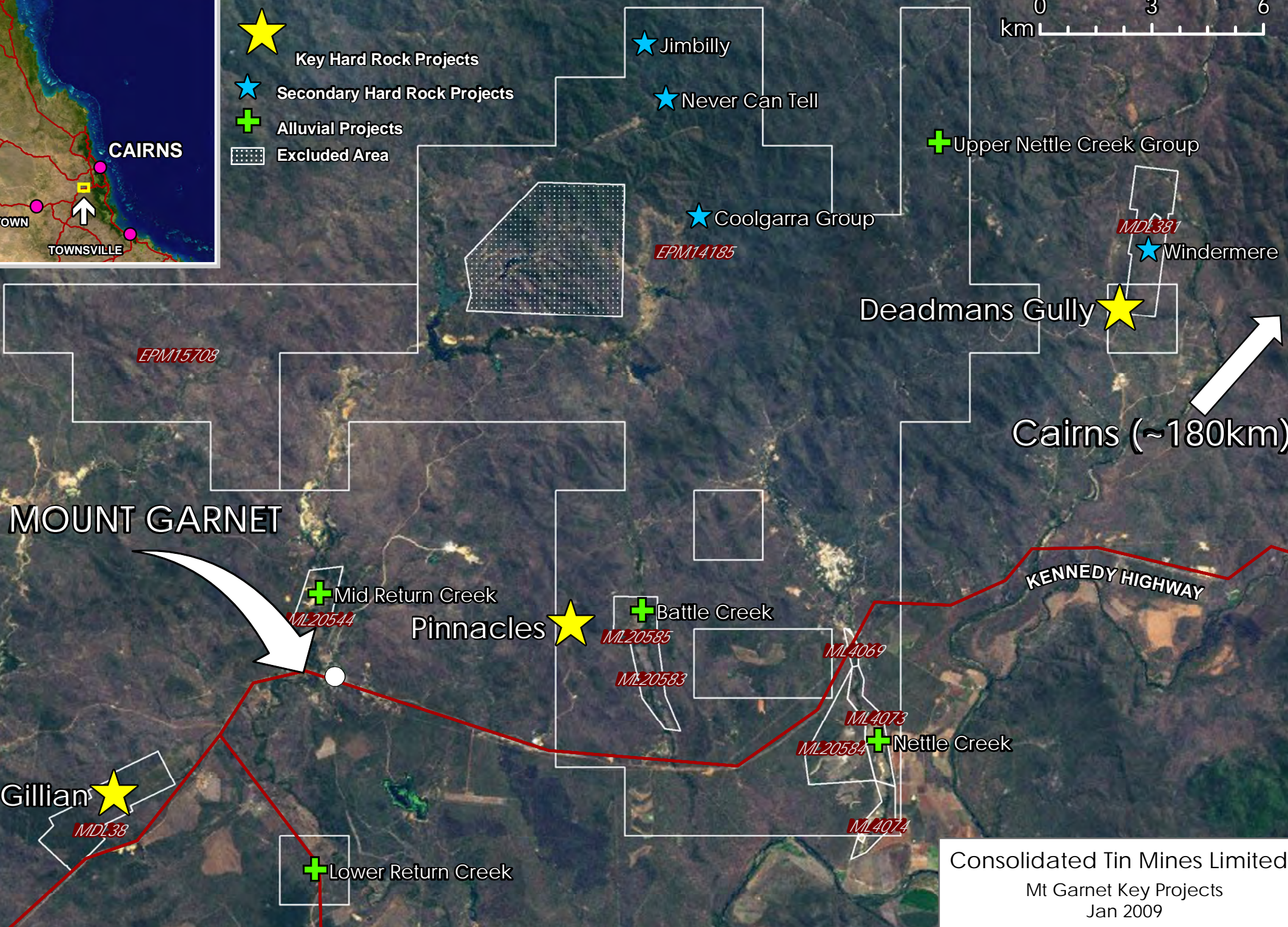
Hole	Intercept (m)	%Sn	%Fe
H75 (Gillian)			
	28-29	0.70	23.5
	29-30	1.21	42.6
	30-31	1.36	39.4
	31-32	0.43	36.1
	32-33	0.37	34.4
	33-34	0.27	22.7
	34-35	0.24	31.4
	35-36	0.25	30.6
	36-37	0.29	32.2
	37-38	0.21	27.0
	38-39	0.29	26.0
	39-40	0.33	26.3
	40-41	0.20	24.7
	41-42	0.24	25.8
...	48-49	0.93	28.1
	49-50	1.29	24.9
H76 (Gillian)			
	71-72	0.36	23.7
	72-73	0.62	21.7
	73-74	0.33	30.4
	74-75	0.25	34.6
	75-76	0.55	21.8
	77-78	0.52	21.6
H77 (Gillian)			
	60 - 61	0.35	25.3
	61 - 62	1.56	36.2
	62 - 63	0.59	57.6
	63 - 64	0.73	47.5
	64 - 65	0.57	52.6
	65 - 66	0.51	38.3
	66 - 67	0.40	28.1
	67 - 68	0.60	28.1
	68 - 69	0.33	16.1
	69 - 70	0.31	16.0
H78 (Gillian)			
	57 - 58	0.37	33.6
	58 - 59	1.01	48
	59 - 60	1.75	44.4
	60 - 61	0.71	47.4
	61 - 62	0.44	20
H80 (Gillian)			
	7 - 8	0.21	46.9
	8 - 9	1.67	48.9
	9 - 10	0.55	31.4

Hole	Intercept (m)	%Sn	%Fe
H82 (Gillian)			
	14 - 15	0.23	21.4
	15 - 16	0.35	25.9
	16 - 17	0.85	40.3
	17 - 18	0.42	38.6
	18 - 19	0.26	27.6
	19 - 20	0.31	29.4
	20 - 21	0.31	23.1
	21 - 22	0.62	45.2
	22 - 23	1.12	54.0
	23 - 24	1.52	56.6
	24 - 25	1.47	55.3
	25 - 26	1.07	59.5
	26 - 27	1.13	59.6
	27 - 28	0.97	51.9
	28 - 29	0.86	57.4
	29 - 30	0.94	58.3
	28 - 29	0.86	57.4
	29 - 30	0.94	58.3
	32 - 33	0.33	39.7
	33 - 34	0.15	32.0
	34 - 35	0.78	32.6
	35 - 36	1.19	35.2
	36 - 37	0.67	25.9
H83 (Gillian)			
	16 - 17	0.62	16.4
	17 - 18	0.60	24.7
	18 - 19	0.89	29.8
	19 - 20	0.89	27.8
	20 - 21	0.75	51.9
	21 - 22	1.00	50.7
	22 - 23	1.68	48.0
	23 - 24	1.16	58.2
	24 - 25	0.61	62.2
	25 - 26	0.47	63.2
	26 - 27	0.96	53.4
	27 - 28	2.02	53.5
	28 - 29	0.51	61.3
	29 - 30	0.79	59.1
	30 - 31	2.12	56.8
	31 - 32	1.20	57.5
	32 - 33	0.76	53.2
	33 - 34	0.98	57.1
	34 - 35	0.83	45.0
	35 - 36	1.05	47.1
	36 - 37	1.40	37.5
	37 - 38	1.83	46.3
	38 - 39	1.04	54.1
	39 - 40	1.21	53.6
	40 - 41	1.48	49.0

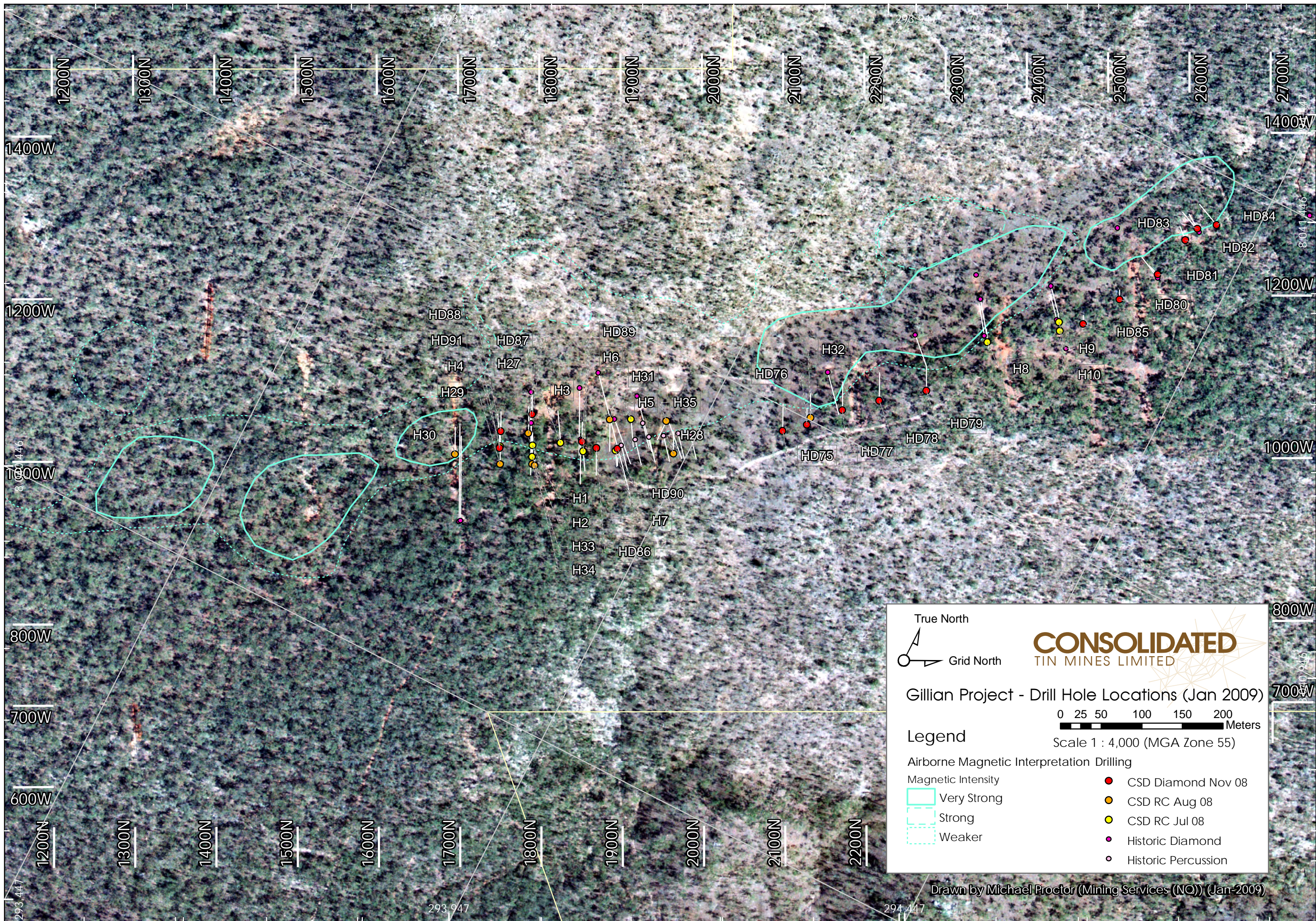


Legend

- ★ Key Hard Rock Projects
- ★ Secondary Hard Rock Projects
- + Alluvial Projects
- ▨ Excluded Area



Consolidated Tin Mines Limited
Mt Garnet Key Projects
Jan 2009



True North
 Grid North

CONSOLIDATED
 TIN MINES LIMITED

Gillian Project - Drill Hole Locations (Jan 2009)

0 25 50 100 150 200
 Meters

Scale 1 : 4,000 (MGA Zone 55)

Legend

Airborne Magnetic Interpretation Drilling

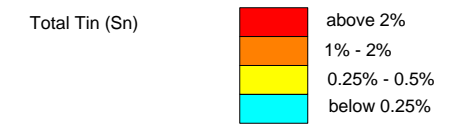
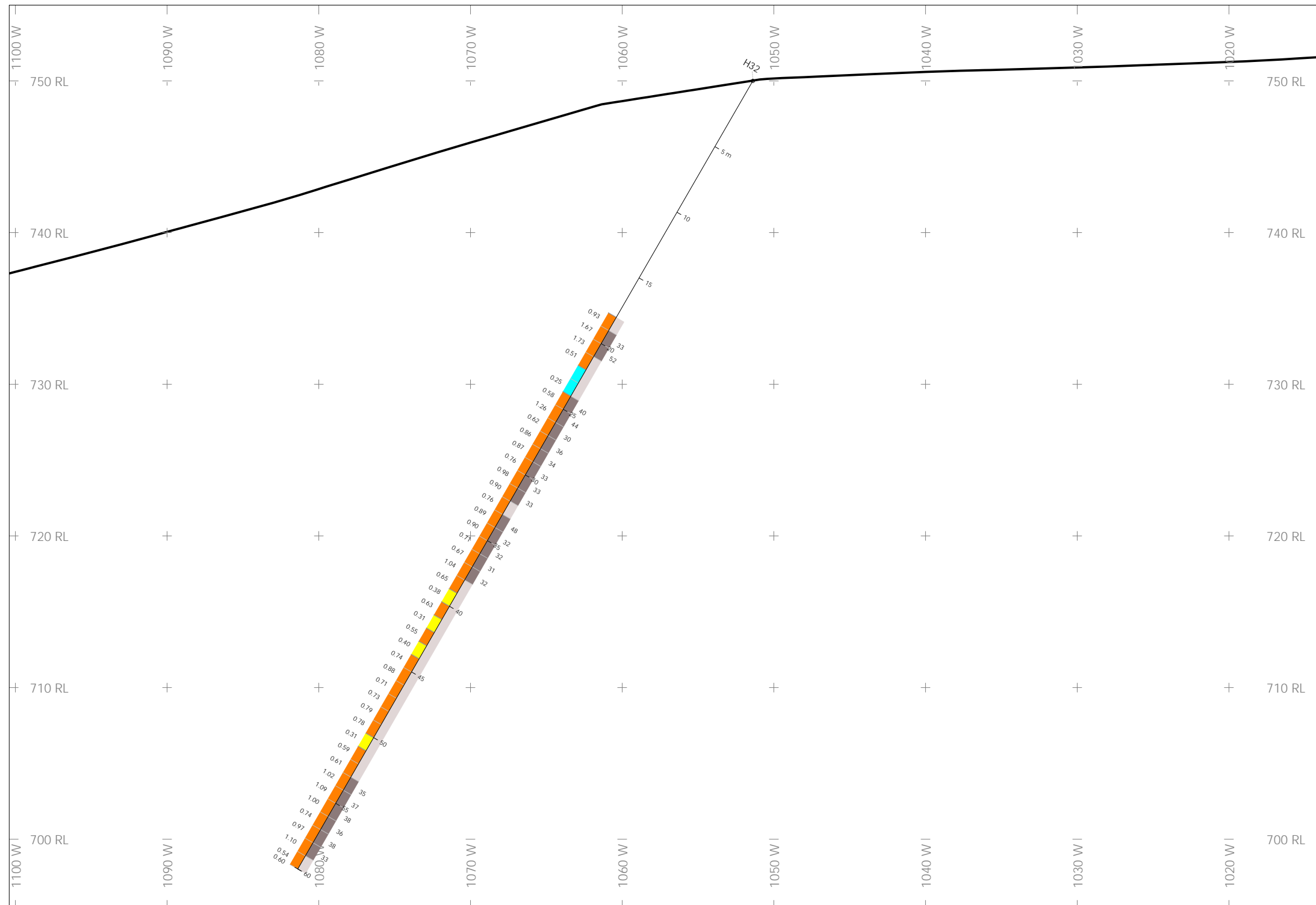
Magnetic Intensity

- Very Strong
- Strong
- Weaker

- CSD Diamond Nov 08
- CSD RC Aug 08
- CSD RC Jul 08
- Historic Diamond
- Historic Percussion

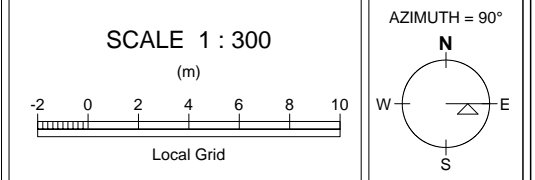
Drawn by Michael Proctor (Mining Services (NO)) (Jan-2009)

Gillian Project H32



SECTION SPECS:

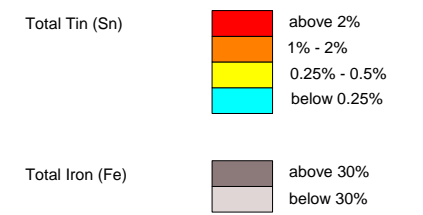
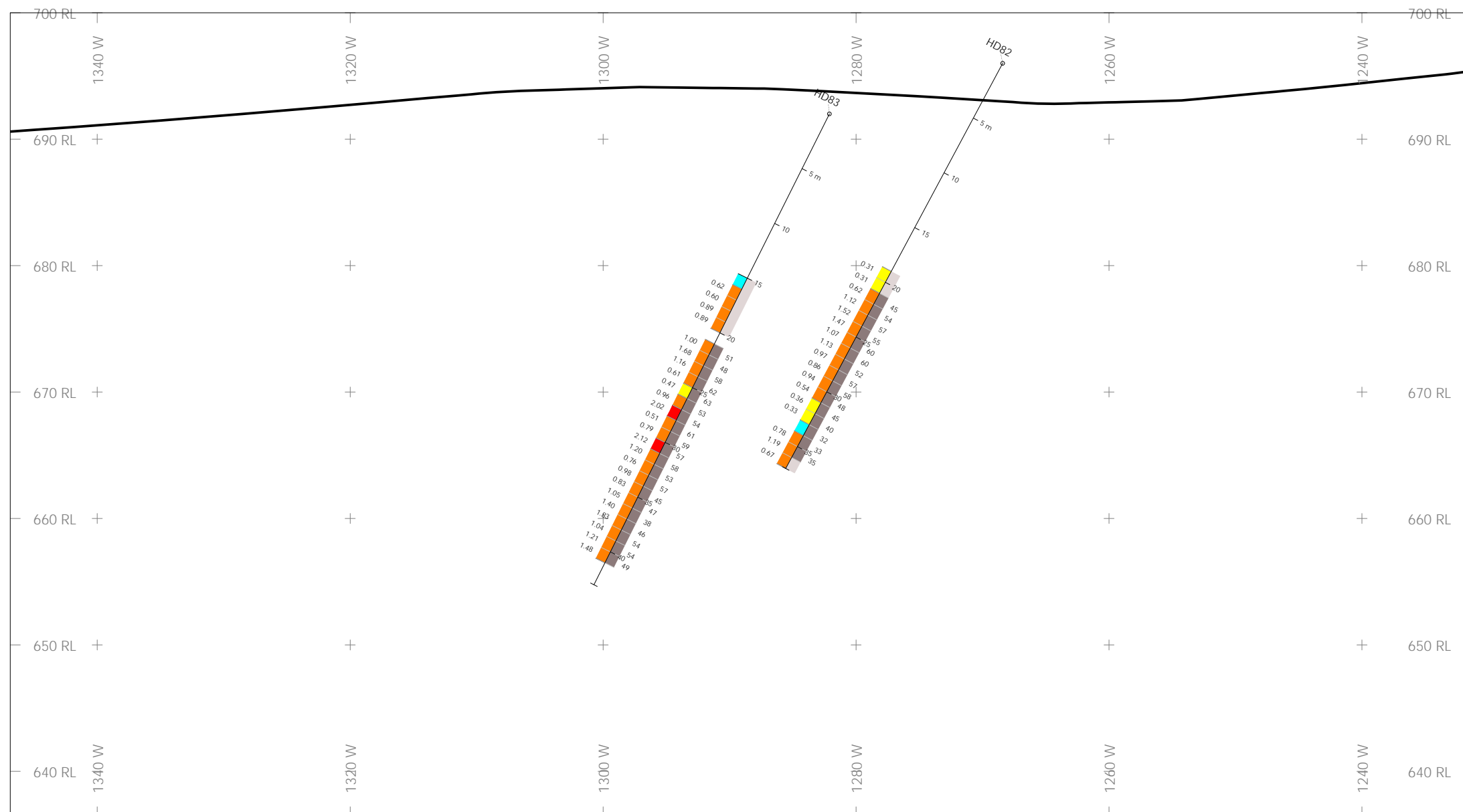
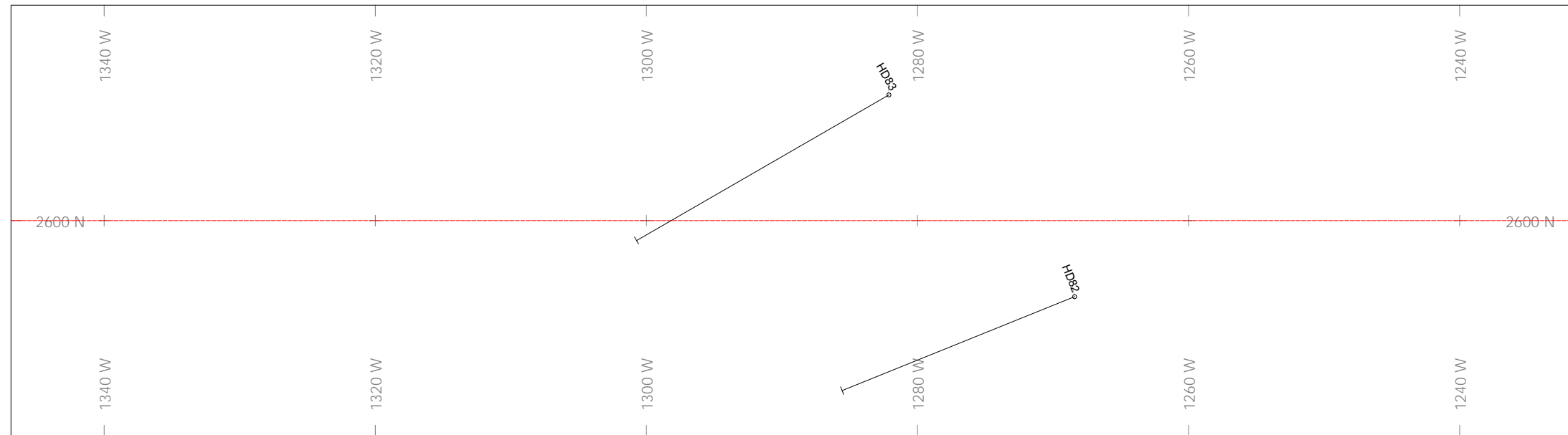
REF. PT. E, N	-1057 m	2130 m
EXTENTS	86.82 m	59.63 m
SECTION TOP, BOT	755 m	695.4 m
TOLERANCE +/-	5 m	



CSD
Gillian Project
2130N SECTION

Gillian Project

H82, H83



SECTION SPECS:

REFERENCE POINT	East, North	-1289 m	2600 m
EXTENTS		115.8 m	63.6 m
SECTION TOP, BOT		700 m	636.4 m
TOLERANCE	+/-	16.65 m	

