

ASX/Media Release
7th September 2010

Windermere Tin Project Granted

JORC Mineral Resource at Mt Garnet Tin Project increased by 2.1Mt

Key Points

- The grant of the Windermere Project (MDL 381) has now been completed and the project will be added to the Company's Mt Garnet Tin Project in northern Queensland.
- The Windermere Project has an Inferred **JORC Mineral Resource of 2.1Mt @ 0.55% Tin (Sn)** and will significantly increase the resource base at Mt Garnet.
- The total JORC Mineral Resource at the Mt Garnet Project is now **7.3Mt @ 0.6% Tin (Sn)**.
- 40 hole Reverse Circulation, 2000m drill program planned at Windermere to provide an upgrade of the current Windermere JORC resource estimation.
- The Windermere Project is the third of three key projects that makes up the Mt Garnet Tin project area; the others are the Gillian Project and Pinnacles Project.
- Consolidated Tin plans to develop the Mt Garnet project area into Queensland's major hard rock tin mine.

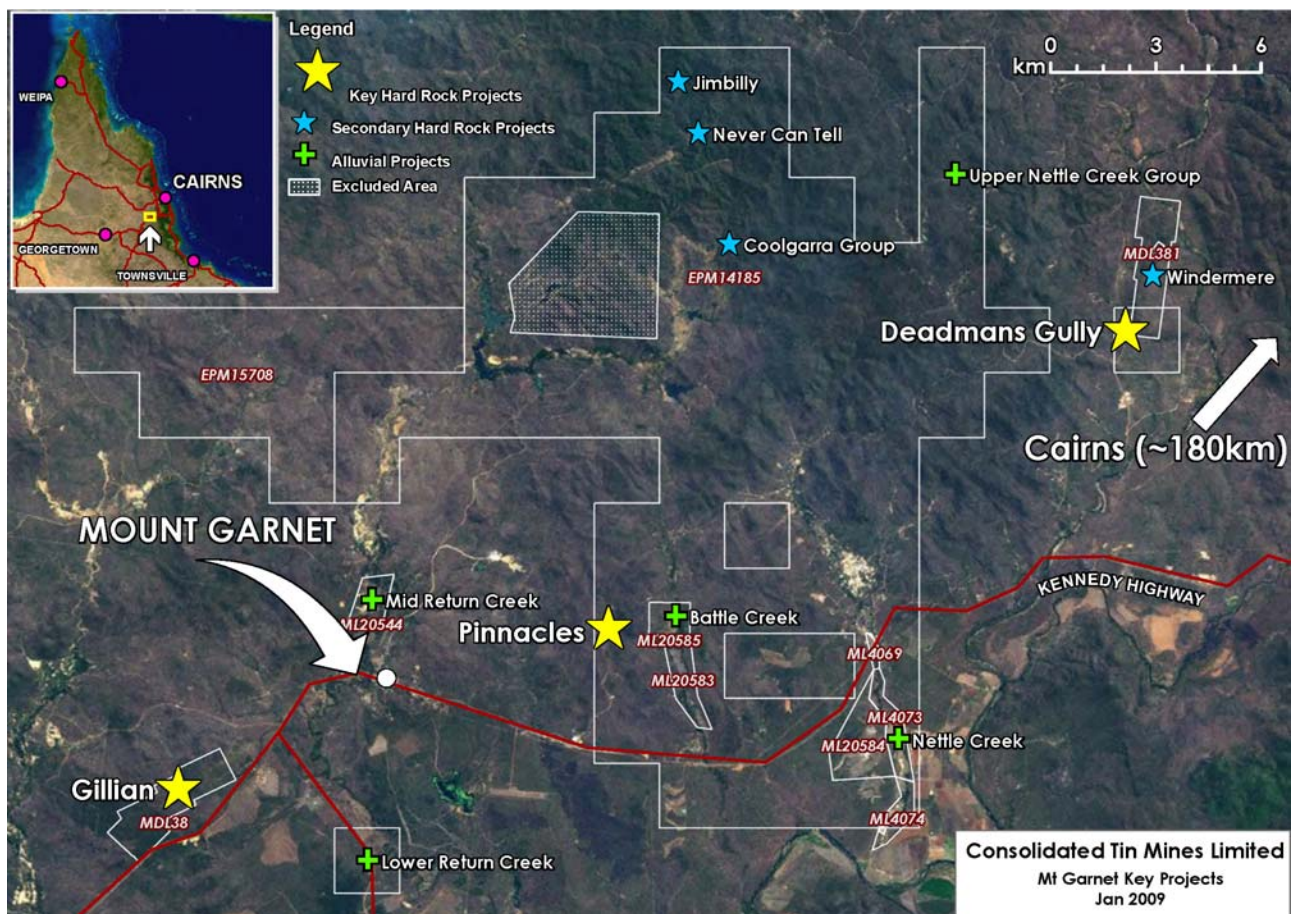
Australian tin exploration and development company Consolidated Tin Mines (ASX: CSD) is pleased to announce that the Queensland state government has now granted the Windermere Project (Mineral Development Licence 381) at the Company's Mt Garnet Tin project area near Cairns in northern Queensland.

The Windermere Project has a current Inferred **JORC Mineral Resource of 2.1Mt @ 0.55% Tin (Sn)** (see note 1). This will now be added to the company's overall JORC Mineral Resource. This increases the **total JORC Mineral Resource at the Mt Garnet Project to 7.3Mt @ 0.60% Tin (Sn)**, across its three key project areas; Gillian, Pinnacles and Deadmans Gully/Windermere (see Figure 1, Attached). A breakdown of the total JORC Resource is shown in Table 1 attached.

The Company will focus its next phase of drilling on upgrading the JORC resource estimation for the Windermere project, and plans to commence drilling at the Windermere Project in the near future.

The Windermere Mineral Development Licence (MDL) was purchased from Bluestone Nominees in February 2008 and has been proceeding through government departmental processes to grant. The Windermere Project will now be transferred to 100% CSD ownership.

Figure 1: Mt Garnet Key Projects



The first stage drilling program at Windermere will be a 2000 metres Reverse Circulation program over 40 holes, to test the strike extent of the mineralisation at 40 metre spacing. The planned intersection depth will be approximately 30 metre vertical depth below surface. Historic records indicate the mineralisation is steeply dipping to the east and drill direction will be from east to west.

The Company plans to confirm the tabular nature of the mineralisation, the potential large tonnage and potential economic tin mineralisation at Windermere, as well as potential iron and base metals mineralisation.

Background to Windermere Project

Otter Exploration NL (Otter) acquired the Windermere project area in 1972 and completed geological mapping and trenching across the ironstone outcrop over a three kilometre strike length. Mineralisation was interpreted as a series of tabular lenses (six identified and listed A to F) of limestone altered skarn mineralisation, with a magnetic north outcrop trend and generally steep easterly dip. Individual lenses of strike lengths of up to 800 metres were identified.

Surface rock chip sampling and trenching returned results consistently better than 0.2% Sn and many results better than 1% Sn. Otter continued to hold the prospect, initially under mining leases and then under Mineral Development Licence. Strike Exploration Pty Ltd (Strike) held the MDL in the mid 1990s and re-sampled the trenches and reviewed the surface rock sampling. Continuity of mineralised lenses to 50 metres below surface was assumed.

The Windermere MDL was transferred to Bluestone Nominees Pty Ltd (Bluestone), a subsidiary of MetalsX Ltd. Consolidated Tin then entered into an agreement to acquire the tenement from Bluestone, and is in the process of being transferred to Consolidated Tin Mines.

Figure 2: Simplified geology of Windermere mineralisation (shown on Strike Mining map)

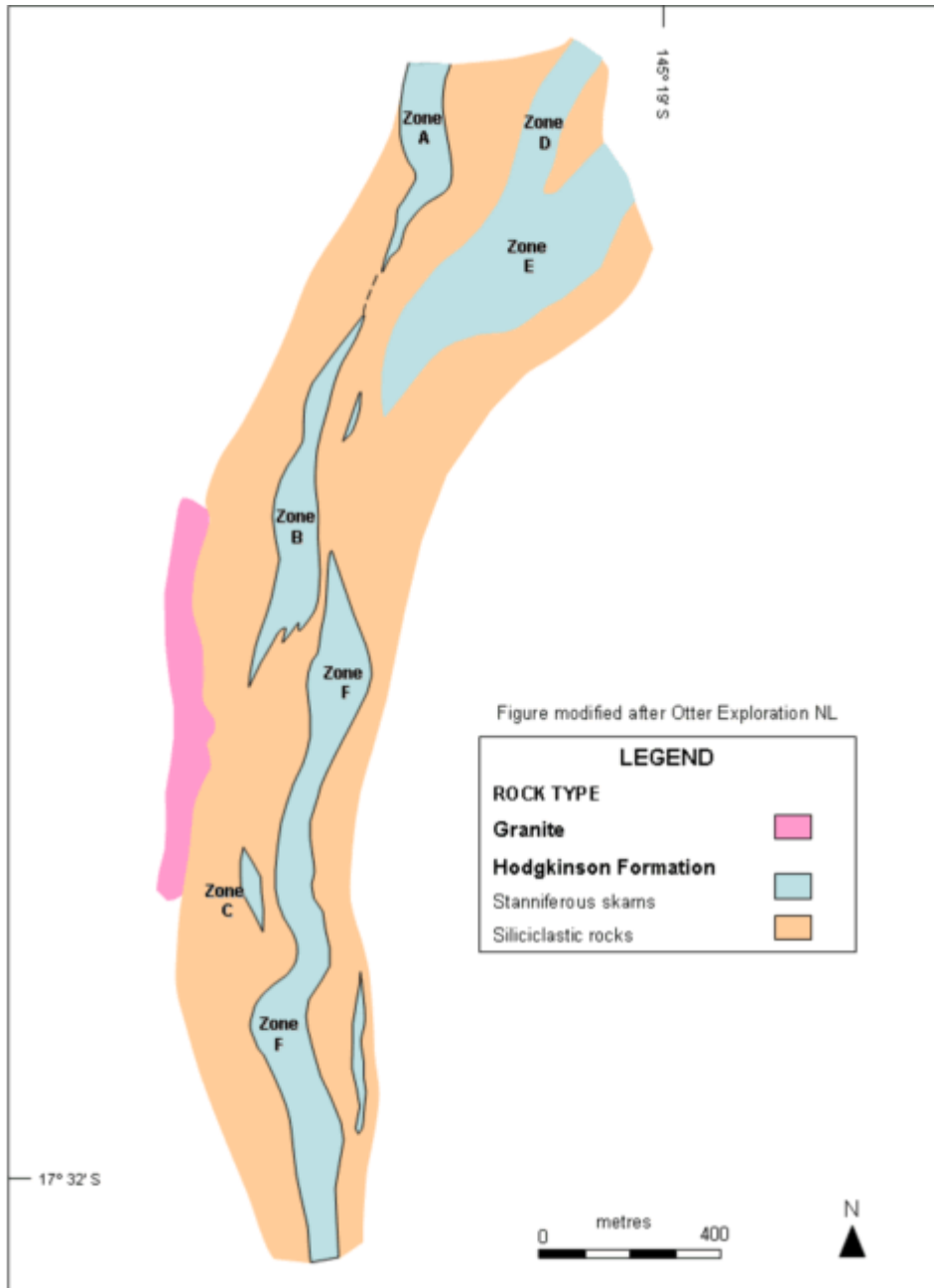





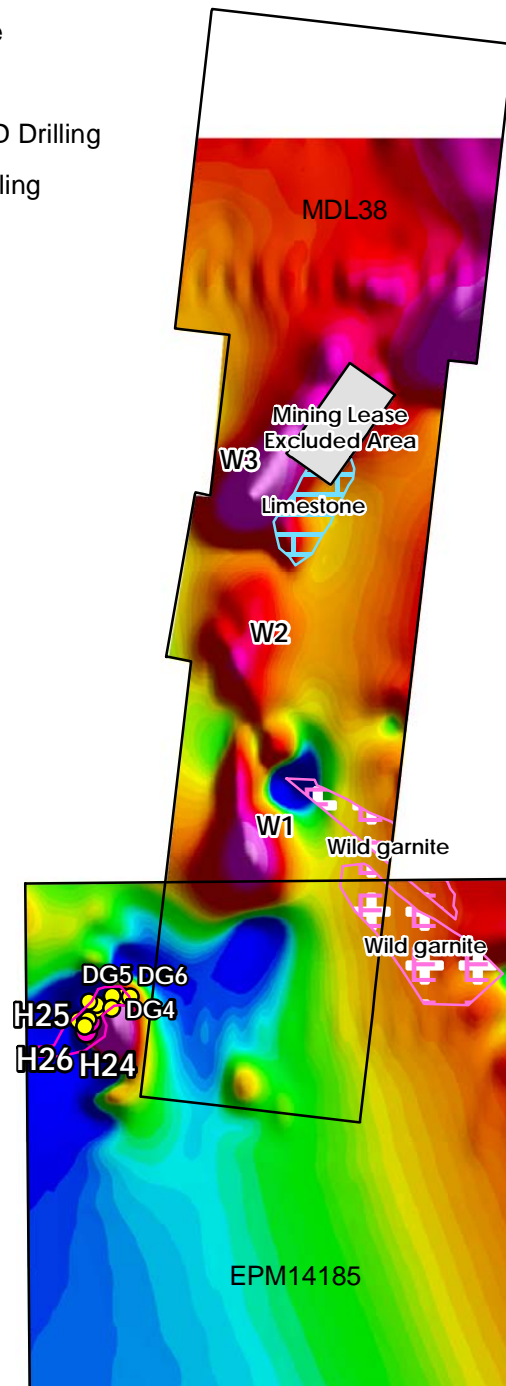


Figure 3: Magnetic and radiometrics survey of the Windermere mineralisation confirms extent of mineralisation. The magnetic RTP map of Windermere

Legend

-  Nettle Granite
-  Wild garnite
-  Limestone
-  Recent CSD Drilling
-  Historic Drilling



ENDS

For further information please contact;

Ralph De Lacey
Managing Director
Consolidated Tin Mines
P: 07 4032 3319
M: 0428 163 176
E: ralph@csttin.com.au
W: www.csttin.com.au

James Moses
Investor Relations and Media Relations
Mandate Corporate
M: 0420 991 574
E: james@mandatecorporate.com.au

ABOUT CONSOLIDATED TIN MINES LIMITED

Consolidated Tin Mines Limited ((ASX: CSD) is a junior exploration company focused on Tin at Mt Garnet in the lower Herberton tin field in north Queensland.

The Company's goal is to become Queensland's premier tin producing company. Consolidated Tin's short to medium term goals are:

- Develop a hard rock mining operation
- Develop a centrally located mill capable of 1Mtpa
- Develop an alluvial mining operation
- Explore other known mineralisation in current tenement holding to provide resource expansion and additional mine life

TIN (Sn)	Measured tonnes	Grade %	Indicated tonnes	Grade %	Inferred tonnes	Grade %	Total tonnes	Grade %
Gillian	1,203,000	0.82	824,100	0.73	974,100	0.77	3,001,200	0.78
Pinnacles - Wafer	-	-	218,200	0.49	1,133,100	0.39	1,351,300	0.41
Pinnacles - Sniska	-	-	-	-	306,900	0.32	306,900	0.32
Pinnacles - Hartog	-	-	-	-	212,700	0.51	212,700	0.51
Deadmans Gully	-	-	401,500	0.49	-	-	401,500	0.49
Windermere	-	-	-	-	2,103,000	0.55	2,103,000	0.55
TOTAL	1,203,000	0.82	1,443,800	0.63	4,729,800	0.54	7,376,600	0.60

IRON (Fe)	Measured tonnes	Grade %	Indicated tonnes	Grade %	Inferred tonnes	Grade %	Total tonnes	Grade %
Gillian	1,203,000	31.35	824,100	29.75	974,100	27.67	3,001,200	29.72
Pinnacles - Wafer	-	-	218,200	20.21	1,133,100	27.88	1,351,300	16.87
Pinnacles - Sniska	-	-	-	-	306,900	22.90	306,900	22.90
Pinnacles - Hartog	-	-	-	-	212,700	13.75	212,700	13.75
Deadmans Gully	-	-	401,500	34.89	-	-	401,500	34.89
TOTAL	1,203,000	31.35	1,443,800	29.73	2,626,800	26.08	5,273,600	25.78

FLUORINE (F)	Measured tonnes	Grade %	Indicated tonnes	Grade %	Inferred tonnes	Grade %	Total tonnes	Grade %
Pinnacles - Wafer	-	-	-	-	348,300	18.54	348,300	18.54
Pinnacles - Sniska	-	-	-	-	306,900	12.00	306,900	12.00
Pinnacles - Hartog	-	-	-	-	212,700	15.50	212,700	15.50
Pinnacles - Llahsram	-	-	-	-	91,700	13.00	91,700	13.00
TOTAL	-	-	-	-	959,600	15.25	959,600	15.25

Note 1; The Inferred resource estimate is estimated by John Sainsbury and is based on an assumption of dip continuity to 100 metres of 1700 metres of strike extent of the Windermere mineralisation with average width of 4 metres. The dimensions are conservative estimations of exposed strike length and average width. The dip extent is based on current RL difference of 50 metres in current exposures of the mineralisation and evidence of skarn continuity from drilling programs at the Company's other Mt Garnet skarns. Density of 3 is used from measurements from the company skarn occurrences for similar massive ironstone. Grade estimate is the average assay of surface samples and trench exposures of the ironstones.

The information contained in this report that relates to assay results of rock samples and drill chips, to mineral resource estimates and to ore reserve estimates of mineralisation is based on information compiled by John Sainsbury (BSc, AusIMM) an executive director of Consolidated Tin Mines Limited. John Sainsbury is a geologist of 30 years experience and has sufficient experience in the type of mineralisation under consideration to qualify as a Competent Person as defined by the Australasian Code for Reporting of Exploration Results, Mineral Resources and Ore Reserves - JORC Code, 2004 Edition. John Sainsbury has consented to the inclusion of this information in the form and context in which it appears.