



CONSOLIDATED
TIN MINES LTD

BUILDING A MAJOR AUSTRALIAN TIN PROJECT

INVESTOR UPDATE : February 2010

ASX: CSD

Disclaimer

CONSOLIDATED
TIN MINES LTD

This presentation has been prepared by Consolidated Tin Mines Ltd (CSD) based on information from its own and third party sources and is not a disclosure document. By retaining this Presentation, you (the Recipient) acknowledge and represent to CSD that you have read, understood and accept the terms of this Important Notice. If you do not accept these terms, you should immediately destroy or delete this Presentation. This Presentation does not purport to contain all information that a prospective investor may require in connection with any potential investment in CSD. Each Recipient must make its own independent assessment of CSD before acquiring any securities in CSD ("Securities"). You should not treat the contents of this Presentation, or any information provided in connection with it, as financial advice, financial product advice or advice relating to legal, taxation or investment matters. Before acquiring any Securities, you should consult your own advisers and conduct your own investigation and analysis in relation to CSD.

No representation or warranty is made by CSD or any of its advisers, agents or employees as to the accuracy, completeness or reasonableness of the information in this Presentation or provided in connection with it. No information contained in this Presentation or any other written or oral communication in connection with it is, or shall be relied upon as, a promise or representation and no representation or warranty is made as to the accuracy or attainability of any estimates, forecasts or projections set out in this Presentation. No liability will attach to CSD or its advisers with respect to any such information, estimates, forecasts or projections. CSD does not accept responsibility or liability for any loss or damage suffered or incurred by you or any other person or entity however caused (including, without limitation, negligence) relating in any way to this Presentation including, without limitation, the information contained in or provided in connection with it, any errors or omissions from it however caused (including without limitation, where caused by third parties), lack of accuracy, completeness, currency or reliability or you, or any other person or entity, placing any reliance on this Presentation, its accuracy, completeness, currency or reliability. CSD does not accept any responsibility to inform you on any matter arising or coming to CSD's notice after the date of this Presentation which may affect any matter referred to in this Presentation. Any liability of CSD, its advisers, agents and employees to you or to any other person or entity arising out of this Presentation including pursuant to the Australian Securities and Investments Commission Act, 2001, Corporations Act 2001 and the Trade Practices Act 1974 or any other applicable law is, to the maximum extent permitted by law, expressly disclaimed and excluded. The distribution of this Presentation may be restricted by law in certain jurisdictions. Recipients, and any other persons who come into possession of this Presentation must inform themselves about, and observe any such restrictions.

Future Matters

This Presentation contains reference to certain intentions, expectations, future plans, strategy and prospects of CSD. Those intentions, expectations, future plans, strategy and prospects may or may not be achieved. They are based on certain assumptions, which may not be met or on which views may differ and may be affected by known and unknown risks. The performance and operations of CSD may be influenced by a number of factors, many of which are outside the control of CSD. No representation or warranty, express or implied, is made by CSD or any of its directors, officers, employees, advisers or agents that any intentions, expectations or plans will be achieved either totally or partially or that any particular rate of return will be achieved. Given the risks and uncertainties that may cause CSD's actual future results, performance or achievements to be materially different from those expected, planned or intended, Recipients should not place undue reliance on these intentions, expectations, future plans, strategy and prospects. CSD does not warrant or represent that the actual results, performance or achievements will be as expected, planned or intended.

COMPANY OVERVIEW

Investment highlights

CONSOLIDATED
TIN MINES LTD

- ✓ Company focused on developing a major Australian Tin mining operation
- ✓ Portfolio of high quality Tin Projects in major tin producing area – historical production of 85,000t of tin metal in concentrate
- ✓ Aim to grow resource base of 8Mt-10Mt @ (ave) 0.5% tin and develop open pit mining operation producing 5,000t tin metal pa
- ✓ Initial mine life 8-10 years with major expansion potential from project portfolio
- ✓ China is main tin producer but is net importer and has no exports of tin concentrate
- ✓ Indonesia is next largest producer but production is declining and there are few mines coming on-stream in the world in the next 3-4yrs
- ✓ Tin prices recovered well from GFC; 35% higher than 12 months ago @ US\$15,500/t
- ✓ Company also has portfolio of alluvial Tin projects that can potentially commence production in the short term to provide early cash flow
- ✓ Project also has a significant Iron resource
- ✓ Strong technical Board with long term experience in the region
- ✓ Project well positioned relative to major road, rail, port infrastructure

Corporate Overview

CONSOLIDATED
TIN MINES LTD

Issued Capital

ASX Code:	CSD
Shares:	54.5 million
Listed Options:	43.4 million (exercisable @ \$0.20 on or before 31/12/2013)
Total Issued Securities:	97.9 million

Price & Capitalisation

Share Price:	7.5c (12/02/10)
12 month high:	15.0c (31/07/09)
Mkt. Cap	\$4 million
Cash Position:	\$1.0 million (31/01/10)

Share Register

Ralph De Lacey Super Fund	15.31%
John Sainsbury Consulting P/L	13.35%
Top 20 hold:	63.96%
Number of shareholders:	448

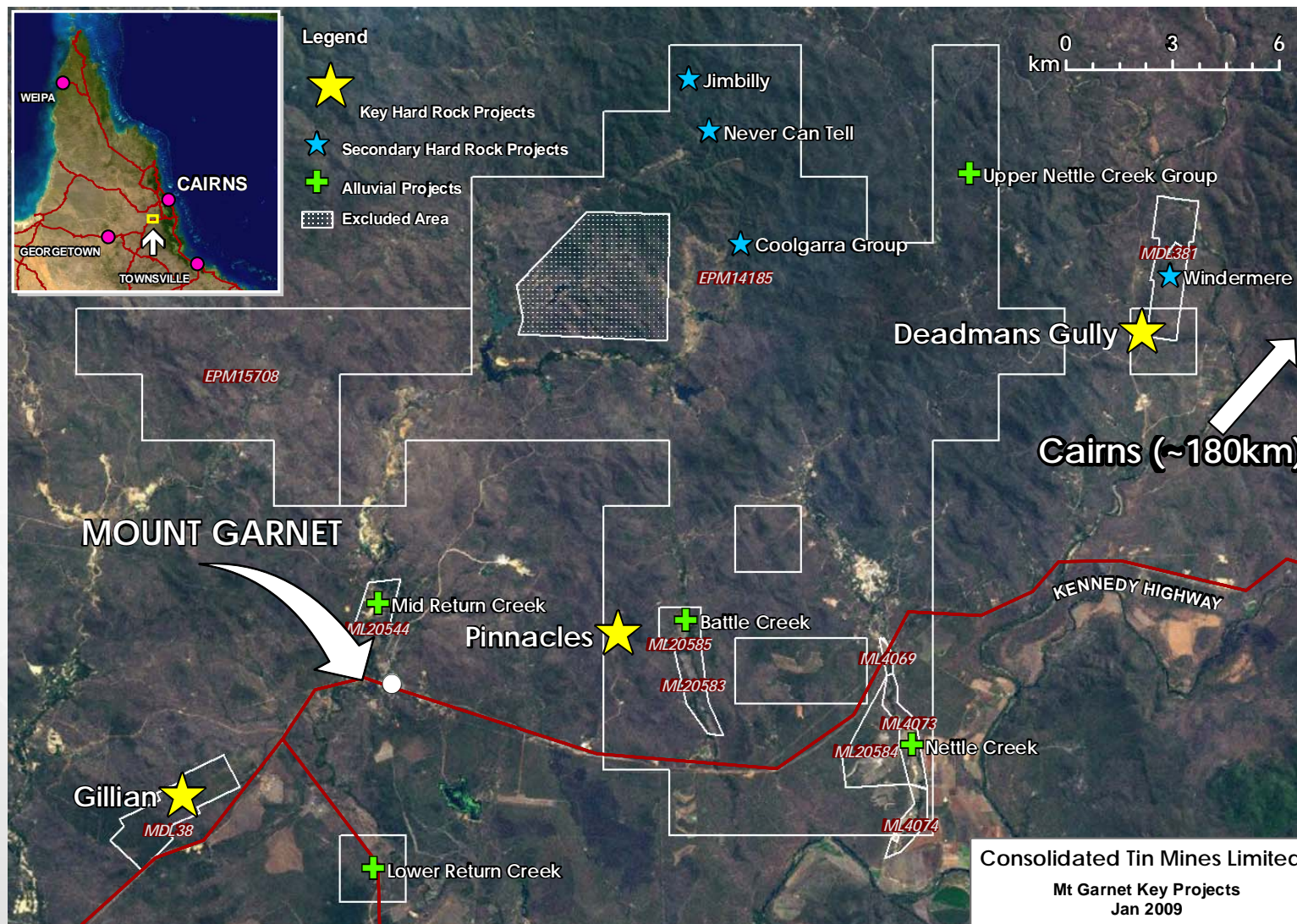
Board of Directors

Mr Ralph De Lacey	Managing Director/Chairman
Mr John Sainsbury	Executive Director – Technical
Mr Andrew Kerr	Non-Executive Director

Project Overview

- ✓ Mt Garnet Tin Project located in lower Herberton Tin Field – one of Australia’s premier tin fields
- ✓ Company has drilled total of 6,600m across 137 holes to date
- ✓ Project is made up 3 key projects;
 - ✓ Gillian – total JORC Resource 3Mt @ 0.80% Tin
 - ✓ Pinnacles – total JORC Resource 1.87Mt @ 0.41% (Ave) Tin
 - ✓ Deadmans Gully – total JORC Resource 401,500t @ 0.49% Tin
- ✓ Total Mt Garnet Project JORC Tin Resource 5.27Mt @ 0.64% tin
- ✓ Gillian is the most advanced project; mineralisation is near-surface & open along strike and at depth
- ✓ Drilling programs confirm potential to develop project into a major, low cost Tin mine
- ✓ Located in established mining area adjacent to Kagara’s major zinc mine at Mt Garnet
- ✓ Project area has major exploration upside and potential to develop an alluvial tin mining operation
- ✓ Project also has a significant JORC Iron Resource; 5.27Mt @ 26.39% Fe

Project Location Map



Development Path to date

CONSOLIDATED
TIN MINES LTD

Feb 2008	Listed on ASX with JORC Resource 2.3Mt @ 0.8% Tin at Gillian project
June – Dec 2008	Three major resource definition drill programs conducted
October 2008	Met testwork & Airborne geophysics confirm tin & iron potential of project
April 2009	Major JORC Resource upgrade; to 5.3Mt @ 0.6% Tin
April 2009	JORC upgrade includes 724,700t @ 0.81% Tin Measured Resource
April 2009	Maiden JORC Iron Resource of 5.3Mt @ 26.5% Fe also confirmed
June 2009	Further Met testwork confirms potential for quality grade tin concentrate
July 2009	Initial discussion with potential Chinese investment partners
September 2009	Appointment of senior Tin Metallurgist to optimize project's tin recoveries
November 2009	New resource upgrade drill program commenced
February 2010	New JORC upgrade includes Measured Resource of 1.2Mt @ 0.82% Tin

MT GARNET TIN PROJECT

Mt Garnet Tin Project

CONSOLIDATED
TIN MINES LTD

- ✓ **Gillian Project** is the most advanced project in the wider Mt Garnet Project area; company has drilled a total of 4,454 metres across 81 holes at the project
- ✓ Is a skarn development with iron rich hematite/magnetite rock outcrop over a 1,100m strike length; company is also assaying for iron at the project
- ✓ Company has drilled a total of 1,949 metres across 50 holes at **Pinnacles Project**; project has exploration target of several million tonnes of tin resources
- ✓ Skarn mineralisation has been intersected over the 3.5km of strike length
- ✓ Pinnacles was also previously explored for fluorine by Comalco in 1970s, and has a JORC Fluorite Resource of 959,600t @15.25% F
- ✓ Company has drilled a total of 210 metres across 6 holes at **Deadmans Gully Project**
- ✓ This project is contained within the Windermere Project and hosts Ironstone rich-skarn rocks over a 2.5 km strike length. To date only the Deadmans Gully part of the project has been explored by Company
- ✓ Company plans to conduct further exploration & develop a large deposit at Windermere upon granting of Mineral Development Licence
- ✓ Company also plans to explore it's other projects in the area to provide resource expansion; Never Can Tell Project, Jimbilly Project and Coolgarra Project

JORC Resources

CONSOLIDATED
TIN MINES LTD

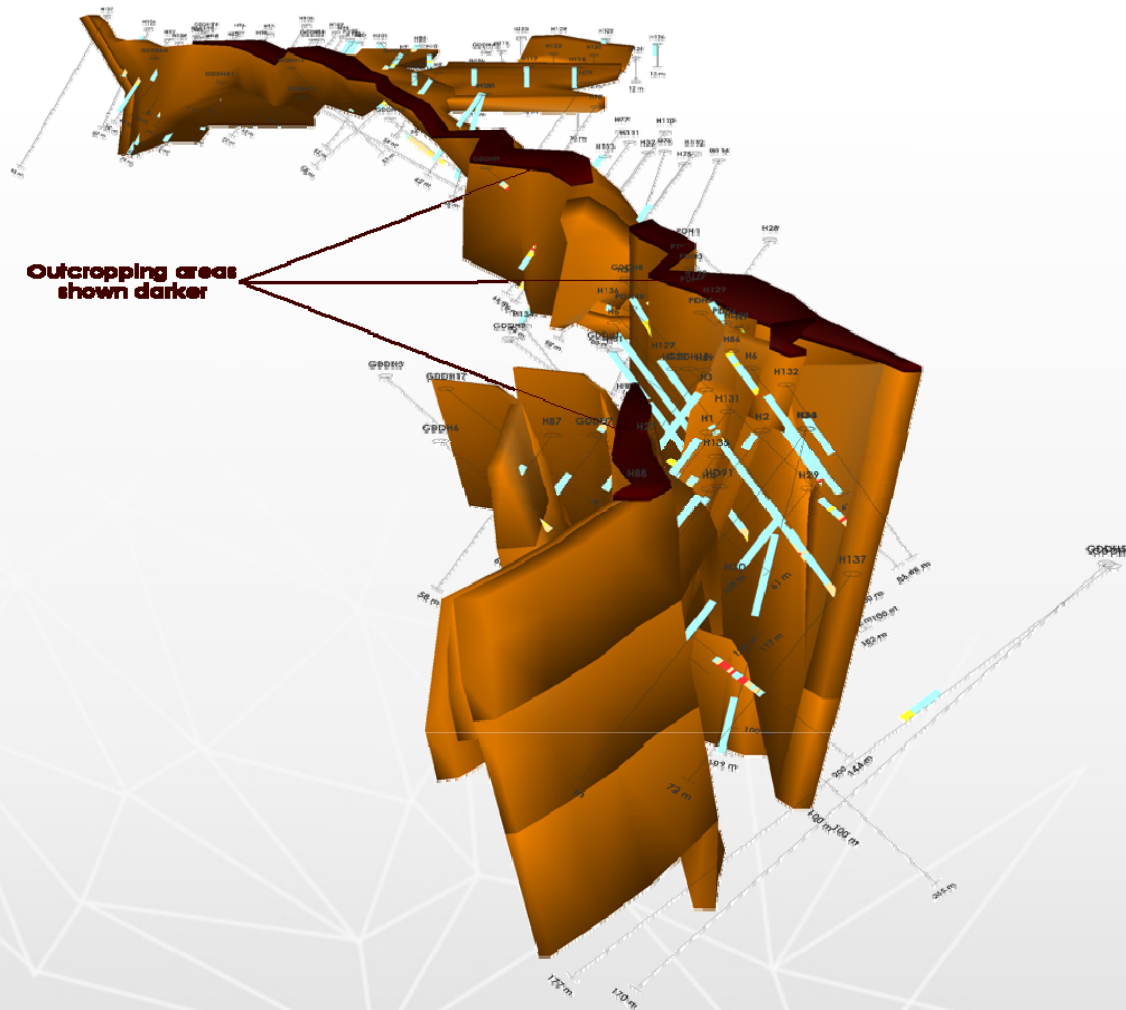
Tin (Sn)	Measured Tonnes	Grade %	Indicated Tonnes	Grade %	Inferred Tonnes	Grade %	TOTAL Tonnes	Grade %
Gillian	1,203,000	0.82	824,100	0.73	974,100	0.83	3,001,200	0.80
Pinnacles – Wafer	-		218,200	0.49	1,133,100	0.39	1,351,300	0.41
Pinnacles - Sniska	-		-	-	306,900	0.32	306,900	0.32
Pinnacles – Hartog	-		-	-	212,700	0.51	212,700	0.51
Deadmans Gully	-		401,500	0.49	-	-	401,500	0.49
TOTAL	1,203,000	0.82	1,443,800	0.63	2,626,800	0.56	5,273,700	0.64

Iron (Fe)	Measured Tonnes	Grade %	Indicated Tonnes	Grade %	Inferred Tonnes	Grade %	TOTAL Tonnes	Grade %
Gillian	1,203,000	31.35	824,100	29.75	974,100	30.98	3,001,300	30.79
Pinnacles – Wafer	-		218,200	20.21	1,133,100	27.88	1,351,300	16.87
Pinnacles - Sniska	-		-	-	306,900	22.90	306,900	22.90
Pinnacles – Hartog	-		-	-	212,700	13.75	212,700	13.75
Deadmans Gully	-		401,500	34.89	-	-	401,500	34.89
TOTAL	1,203,000	31.43	1,443,800	29.73	2,626,800	27.30	5,273,700	26.39

Fluorine (F)	Measured Tonnes	Grade %	Indicated Tonnes	Grade %	Inferred Tonnes	Grade %	TOTAL Tonnes	Grade %
Pinnacles – Wafer	-	-	-	-	348,300	18.54	348,300	18.54
Pinnacles - Sniska	-	-	-	-	306,900	12.00	306,900	12.00
Pinnacles – Hartog	-	-	-	-	212,700	15.50	212,700	15.50
Deadmans Gully	-	-	-	-	91,700	13.00	91,700	13.00
TOTAL	-	-	-	-	959,600	15.25	959,600	15.25

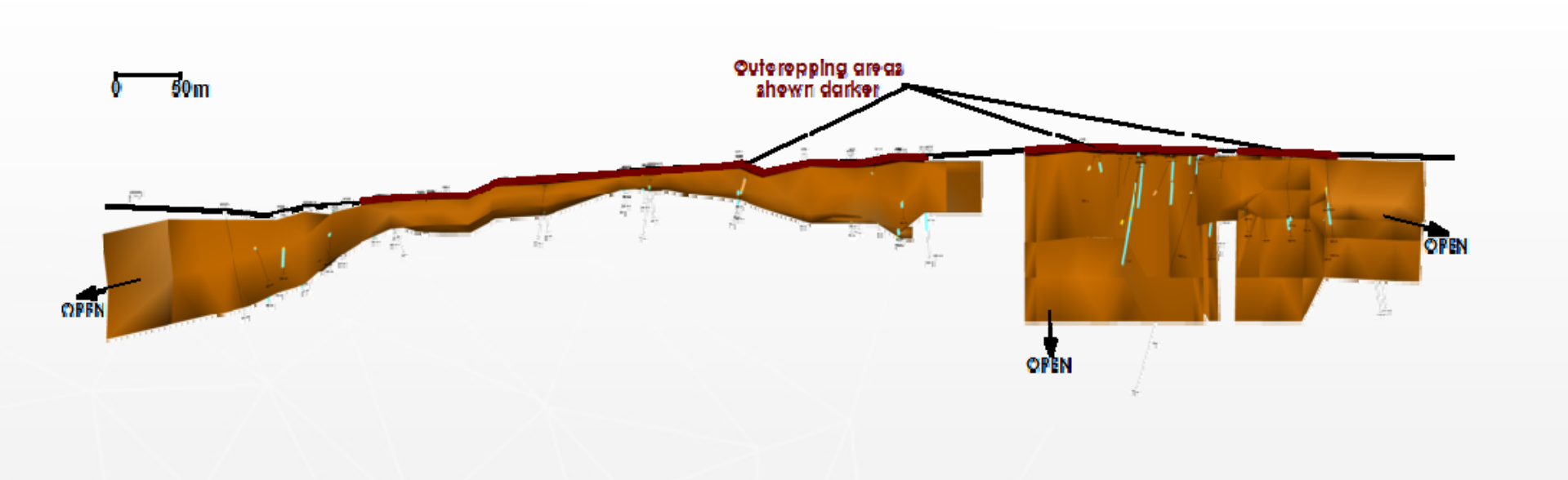
Gillian Project Deposit

CONSOLIDATED
TIN MINES LTD



Gillian Resource: End View facing grid north

Gillian Project Deposit



Gillian Resource: Longitudinal View looking grid east

Metallurgy

- ✓ Metallurgical programs are ongoing at the project
- ✓ Testwork conducted at Burnie Research Laboratories, Tasmania and Downer EDI, Qld
- ✓ Considerable effort placed on establishing appropriate grind size to liberate fine cassiterite and to separate cassiterite from the ironstone skarn material
- ✓ Results to date help confirm potential for project to be developed into large tonnage, low mining cost, open pit mining operation
- ✓ Gravity table testwork of samples of Gillian mineralisation confirmed cassiterite concentrate can be recovered at a grade up to 62% Sn
- ✓ At least 30% tin recoverable at a concentrate assaying 45%Sn
- ✓ A least 40% tin recoverable at a concentrate assaying 17%Sn
- ✓ 22% of iron recoverable at grade better than 60% Fe
- ✓ Iron concentrate will have low assays of impurities; silica, phosphorus, sulphur and aluminium

Infrastructure

- ✓ Power - 66KVA transmission line is located within 1km of the proposed mill site. Application lodged with local power supplier Ergon Energy to provide increased capacity to meet proposed use
- ✓ Water - Provision to construct a large capacity storage dam. The project is located within a reliable rainfall area
- ✓ Port - Nearest port is Mourilyan Harbour, 140km by good all weather sealed highway
- ✓ Road - Project located adjacent National Highway 1
- ✓ Staff & Accommodation - Proposed project located 6km from Mt Garnet and 40km from Ravenshoe. Both towns have all modern facilities such as schools ,shops ,hotels and accommodation, and provide a very attractive lifestyle for staff. The general locality is within a historic mining field with local mining expertise and staff available

TIN MARKETS AND USES

Key Facts

- ✓ Pure tin is a silvery white metal which is soft, ductile and malleable
- ✓ Is an LME-traded metal; current price around US\$15,500/t
- ✓ LME provides the principal pricing mechanism for tin industry
- ✓ Main ore in Tin is cassiterite
- ✓ Readily forms alloys with other metals
- ✓ Is valued for its non-toxicity, resistance to corrosion and attractive appearance
- ✓ One third of all tin produced is used in tinned steel for food & beverage cans
- ✓ Ideal replacement for undesirable metals - lead
- ✓ Tin in solder in consumer electronics has emerged as a major use in recent years

Products and Uses

- ✓ There are many important uses for tin
- ✓ Major use of tin is to produce tinplate for food and beverage packaging
- ✓ Use of tin in solder has increased rapidly with the boom in consumer electrical goods and a move to lead-free solders (backed up by legislation in Europe, Japan & China)
- ✓ Solders with 63% tin are being replaced by solders containing > 95% tin, creating a 35% increase in tin demand
- ✓ Chemical industry is fastest growing consumer of tin; strong demand in paints, plastics and in non-ferrous alloys in engineering industries

Market Trends

- ✓ Tin market has rebounded strongly from GFC in second half of 2009
- ✓ Tin consumption in Asia is strong, driven by growth in consumer electronics market
- ✓ China is the major Tin producing nation but is now a net importer of tin and does not export tin concentrate
- ✓ Indonesia is a major global producer but has declining production; expected to decline further in 2010 and there are few new mines coming on - stream globally

Australian Tin Projects

CONSOLIDATED
TIN MINES LTD

Company	Deposit	Location	000 tonnes ore	% Sn	Contained Sn
Metals X	Rentails	Australia	18,371	0.44	80,596
Kasbah	Achmmach	Morocco	6,000	0.87	52,000
Stellar	Heemskirk	Australia	7,300	0.69	50,370
Venture	Mt Lindsay	Australia	23,000	0.21	49,000
CSD	Mt Garnet	Australia	5,300	0.60	31,800
YTC Resources	Doradilla	Australia	7,810	0.28	22,300
Outback	Maranboy	Australia	722	2.03	14,600
Cluff	Ardlethaan	Australia	3,025	0.42	12,700
Outback	Mt Wells	Australia	1,137	0.97	11,770

Data: Company reports, ITRI estimates

The information contained in this report that relates to assay results of rock samples and drill chips, to mineral resource estimates and to ore reserve estimates of mineralisation has been compiled by John Sainsbury (BSc, AusIMM). John Sainsbury is a geologist of 30 years experience and has sufficient experience in the type of mineralisation under consideration to qualify as a Competent Person as defined by the Australasian Code for Reporting of Exploration Results, Mineral Resources and Ore Reserves - JORC Code, 2004 Edition. John Sainsbury is an executive director of Consolidated Tin Mines Limited. John Sainsbury has consented to the inclusion of this information in the form and context in which it appears.

Contact Details

CONSOLIDATED
TIN MINES LTD

Ralph De Lacey
Managing Director
Consolidated Tin Mines
395 Lake Street
CAIRNS NORTH, QLD, 4870

Ph: (07) 4032 0123
Fax: (07) 4027 9435
Mob: 0428 163 176
Email: rd@csdtin.com.au
Or ralph@nqmining.com.au