

19th January 2011

ASX/MEDIA RELEASE

Key Points

- ◇ Key senior appointments to manage the feasibility studies at the Mt Garnet Tin Project near Cairns in northern Queensland
- ◇ Shaun Simmonds appointed as full-time Project Development Manager for the Mt Garnet Project.
- ◇ Highly experienced resource project manager John Barton appointed as a consultant to the Company
- ◇ The two appointees will work closely together on the planning, implementation and execution of feasibility studies at Mt Garnet
- ◇ Consolidated Tin continues to make strong progress on developing the Mt Garnet Tin project and latest drill results from the Windermere project are due in the near future
- ◇ The Mt Garnet project has a total JORC Resource at Mt Garnet to 7.3Mt @ 0.60% Tin (Sn) – across three main project areas; the Windermere, Gillian and Pinnacles projects



Snapshot:

Current CSD Share Price: **\$0.25**

Current LME Tin Price: **\$27,000**

Detailed information at
www.csttin.com.au

Consolidated Tin Announces Key Senior Appointments to Manage Mt Garnet Tin Project Feasibility Studies

Australian tin exploration and development Company Consolidated Tin Mines Ltd (ASX: CSD) is pleased to announce the following key senior appointments to manage the feasibility studies at its Mt Garnet Tin Project near Cairns in northern Queensland.

Senior mining project manager **Shaun Simmonds** has been appointed to the full-time position of Project Development Manager. Mr Simmonds will be responsible for the implementation and management of the feasibility studies stage of development at the Mt Garnet Project.

Mr Simmonds is a mineral processing and project engineer with more than 25 years experience, which includes expertise across a range of different commodities in major global mining regions. He has strong knowledge in a wide variety of process plants, and has successfully constructed, commissioned and managed process plants in remote locations.

Consolidated Tin is also pleased to announce the appointment of highly experienced resource project manager **John Barton** as a consultant to the Company.

Mr Barton is a minerals processing engineer and has more than 35 years experience in the global mining industry, and will work closely with Mr Simmonds on the planning, implementation and execution of the feasibility studies at the Mt Garnet project.

He has strong expertise in project management, including project evaluation and review, and the preparation of feasibility studies. He has consulted to a number of major mining companies and completed studies for gold, base metal, mineral sands and industrial minerals projects in South Africa, Ghana, Tanzania Indonesia, and Australia, and other countries.

Registered Office:

395 Lake Street,
Cairns North, QLD, 4870

19th of January 2011

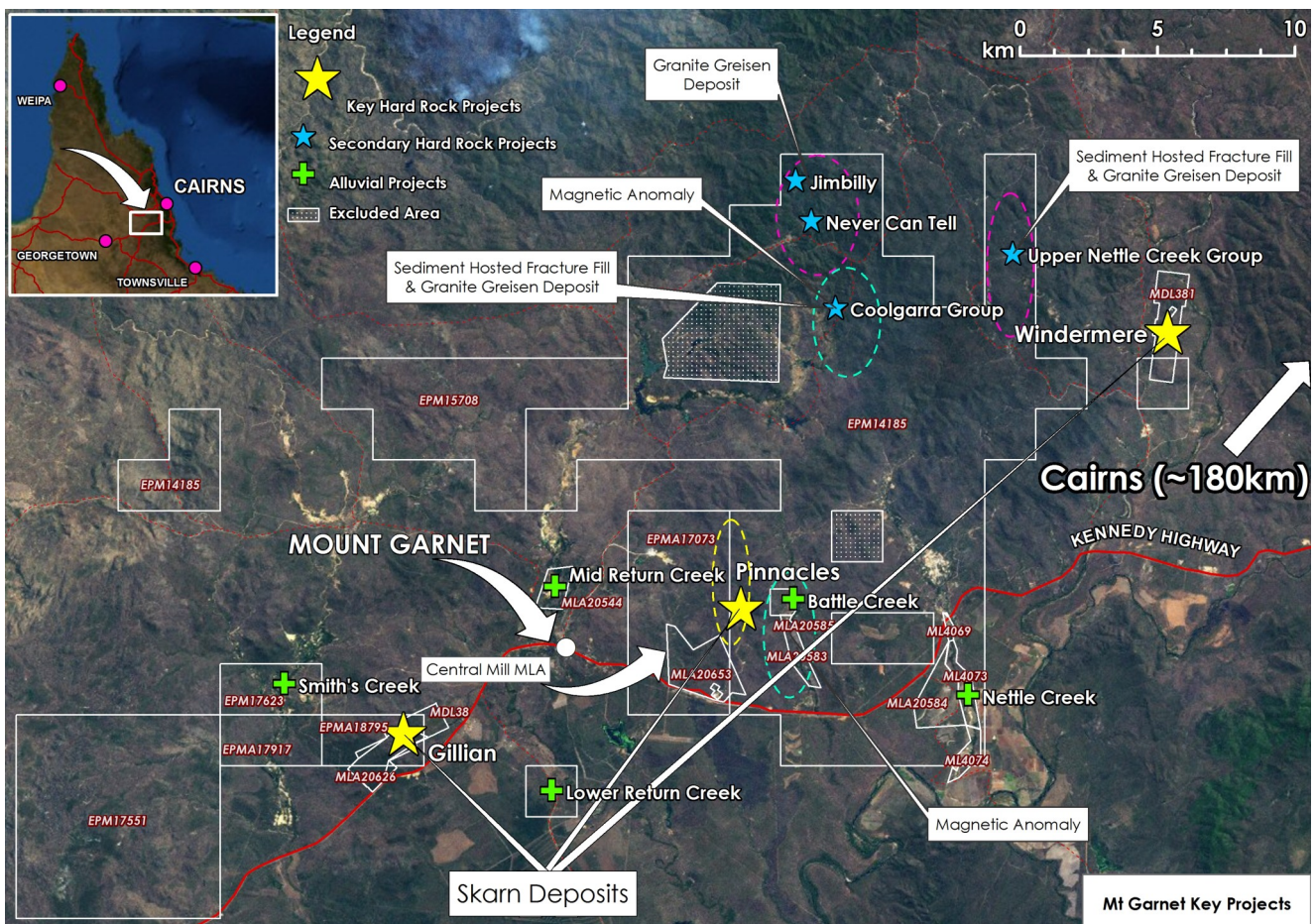
ASX/MEDIA RELEASE

Consolidated Tin Mines Managing Director Ralph De Lacey said: "We are delighted to confirm the appointments of Shaun Simmonds and John Barton. They represent key senior appointments for the Company as we embark on the feasibility study stage at the Mt Garnet Tin Project, and the Company looks forward to their combined skill sets helping to maximise the results of the project's feasibility studies."

Consolidated Tin continues to make strong progress on developing the Mt Garnet Tin project. The project currently has a **total JORC Resource at Mt Garnet to 7.3Mt @ 0.60% Tin (Sn)** – across three main project areas; the Windermere, Gillian and Pinnacles projects. Latest drill results from the Windermere project are due in the near future.

ENDS

Figure 1: Mt Garnet Key Projects



The information contained in this report that relates to assay results of rock samples and drill chips, to mineral resource estimates and to ore reserve estimates of mineralisation is based on information compiled by John Sainsbury (BSc, AusIMM) an executive director of Consolidated Tin Mines Limited. John Sainsbury is a geologist of 30 years experience and has sufficient experience in the type of mineralisation under consideration to qualify as a Competent Person as defined by the Australasian Code for Reporting of Exploration Results, Mineral Resources and Ore Reserves - JORC Code, 2004 Edition. John Sainsbury has consented to the inclusion of this information in the form and context in which it appears.

Table 1: JORC Resource Table

TIN (Sn)	Measured tonnes	Grade %	Indicated tonnes	Grade %	Inferred tonnes	Grade %	Total tonnes	Grade %
Gillian	1,203,000	0.82	824,100	0.73	974,100	0.77	3,001,200	0.78
Pinnacles - Wafer	-	-	218,200	0.49	1,133,100	0.39	1,351,300	0.41
Pinnacles - Sniska	-	-	-	-	306,900	0.32	306,900	0.32
Pinnacles - Hartog	-	-	-	-	212,700	0.51	212,700	0.51
Deadmans Gully	-	-	401,500	0.49	-	-	401,500	0.49
Windermere	-	-	-	-	2,103,000	0.55	2,103,000	0.55
TOTAL	1,203,000	0.82	1,443,800	0.63	4,729,800	0.54	7,376,600	0.60

IRON (Fe)	Measured tonnes	Grade %	Indicated tonnes	Grade %	Inferred tonnes	Grade %	Total tonnes	Grade %
Gillian	1,203,000	31.35	824,100	29.75	974,100	27.67	3,001,200	29.72
Pinnacles - Wafer	-	-	218,200	20.21	1,133,100	27.88	1,351,300	16.87
Pinnacles - Sniska	-	-	-	-	306,900	22.90	306,900	22.90
Pinnacles - Hartog	-	-	-	-	212,700	13.75	212,700	13.75
Deadmans Gully	-	-	401,500	34.89	-	-	401,500	34.89
TOTAL	1,203,000	31.35	1,443,800	29.73	2,626,800	26.08	5,273,600	25.78

FLUORINE (F)	Measured tonnes	Grade %	Indicated tonnes	Grade %	Inferred tonnes	Grade %	Total tonnes	Grade %
Pinnacles - Wafer	-	-	-	-	348,300	18.54	348,300	18.54
Pinnacles - Sniska	-	-	-	-	306,900	12.00	306,900	12.00
Pinnacles - Hartog	-	-	-	-	212,700	15.50	212,700	15.50
Pinnacles - Llahsram	-	-	-	-	91,700	13.00	91,700	13.00
TOTAL	-	-	-	-	959,600	15.25	959,600	15.25

For further information please contact;

Ralph De Lacey
 Managing Director
 Consolidated Tin Mines
 P: 07 4032 3319
 M: 0428 163 176
 E: ralph@cstfin.com.au
 W: www.cstfin.com.au

James Moses
 Investor Relations and Media Relations
 Mandate Corporate
 M: 0420 991 574
 E: james@mandatecorporate.com.au

ABOUT CONSOLIDATED TIN MINES LIMITED

Consolidated Tin Mines Limited ((ASX: CSD) is a junior exploration company focused on Tin at Mt Garnet in the lower Herberton tin field in north Queensland.

The Company's goal is to become Queensland's premier tin producing company. Consolidated Tin's short to medium term goals are:

- Develop a hard rock mining operation
- Develop a centrally located mill capable of 1Mtpa
- Develop an alluvial mining operation
- Explore other known mineralisation in current tenement holding to provide resource expansion and additional mine life