



Snapshot:

Current CSD Share Price: **\$0.07**

Current LME Tin Price: **\$27,890**

Detailed information at
www.cstfin.com.au

Key Points

- ◆ The recent 8,148 metre drill program at Mt Garnet Tin project in North Queensland has been completed
- ◆ 106 holes were drilled in the campaign, with two rigs working in tandem at the project area.
- ◆ Drilling represented a major program for the Company, and assays results are now awaited and will be released as they become available
- ◆ Company is now planning for next phase of drilling which is due to commence in August
- ◆ The Mt Garnet Tin project comprises three main deposits; the Gillian, Windermere and Pinnacles deposits
- ◆ Consolidated Tin plans to develop the Mt Garnet project area into a major hard rock tin mine

8,148 m Drill Program completed at Mt Garnet Tin Project

Assay results awaited

Australian tin exploration and development company Consolidated Tin Mines (ASX: CSD) is pleased to announce it has completed its latest phase of drilling at its Mt Garnet Tin project, near Cairns in northern Queensland.

Consolidated Tin completed a total of 8,148 metres across 106 holes in the drill campaign, with two rigs working in tandem at the project area. Both rigs moved off-site this week, on Wednesday July 20.

The Company now awaits the return of assay results from this phase of drilling, which will be announced as soon as they become available.

This phase of drilling represented a major program for the Company, and involved targeted drilling at a number of deposits within the Mt Garnet project area, as follows:

Windermere deposit: 4,132 metres RC drilling across 49 holes

Gillian deposit: 1,615 metres RC drilling across 17 holes at the southern extension of mineralised area

585 metres diamond drilling across 12 holes, and

Coolgarra project: 1,816 metres RC drilling across 28 holes

Visual observations from the drill program have produced some positive outcomes; with diamond drill hole HD 259 **at the Gillian deposit intersecting a zone of native copper mineralisation within a 9m interval commencing from 101m downhole** (see photos attached). The interval has not yet been subjected to assay with results expected in the next 2 to 3 weeks. This is the first time that significant copper mineralisation has been identified at Gillian, and this area will be further drill tested for copper in the next drill program. The company will also be reassaying adjacent drill holes for copper.

At the company's Coolgarra Project visual observations of rock chip from the RC drilling have showed encouraging intersections of tin mineralisation.

First results from drilling at Windermere have already been received and were released to market on June 21.

Registered Office:

395 Lake Street,
Cairns North, QLD, 4870

The drilling at Windermere intersected significant sections of near-surface tin mineralisation, and provided further confirmation of the project's potential to add additional resources to the Mt Garnet Tin project.

Highlight results previously released include:

Hole 188: 2 m @ 2.70 % Sn from surface
 4 m @ 1.16 % Sn from 20 metres
Hole 148: 15 m @ 0.63 % Sn from 35 metres

The Company is currently planning for the next phase of drilling at the Mt Garnet project, and drill rigs are booked to commence drilling in August.

The Mt Garnet Tin project comprises three main deposits; the Gillian, Windermere and Pinnacles deposits (see Figure 1, Project Location Map). The Mt Garnet project has a **total JORC Mineral Resource of 7.3Mt @ 0.60% Tin (Sn)**, which includes 1.2Mt @ 0.82% Sn in the Measured category at the Gillian deposit. A breakdown of the total Mt Garnet JORC Resource is shown in Table 1 attached.

ENDS

For further information please contact:

Ralph De Lacey	James Moses
Managing Director	Investor Relations and Media Relations
Consolidated Tin Mines	Mandate Corporate
P: 07 4032 3319	M: 0420 991 574
M: 0428 163 176	E: james@mandatecorporate.com.au
E: ralph@cstdtin.com.au	
W: www.cstdtin.com.au	

About Consolidated Tin Mines:

Consolidated Tin Mines is an emerging ASX-listed (ASX: CSD) tin explorer and developer, whose major project is the Mt Garnet Tin Project near Cairns in Queensland, Australia. The project is located in an established mining area, close to all infrastructures, in the Herberton Tin Field. Consolidated Tin's objective is to develop it into a major low cost, open pit tin mining operation.

The Mt Garnet project is made up of three key deposits; the Gillian, Pinnacles and Windermere deposits. The Company's development strategy is to confirm an initial JORC Resource base of 8Mt-10Mt of tin from the three deposits, to feed a proposed centralised mill and process about one million tonnes per annum to produce about 5,000tonnes of tin per annum.

Consolidated Tin has conducted extensive exploration programs at the project, and it has a total current JORC Resource of 7.3Mt @ 0.60% Tin. This includes a JORC Measured Resource of 1.2Mt @ 0.82% Tin at the Gillian deposit. In addition, the project also has an iron Resource of 5.2Mt @ 26.39% Iron which is upgradeable to a high grade Fe product.

Targeted drilling designed to update the project's Resource base is ongoing, and drilling is also underway at a new area at the project, the Coolgarra Group. The Company is also progressing pre-feasibility study work at Mt Garnet, which will play a key role in its future mine development plans.

Figure 1: Project Location Map

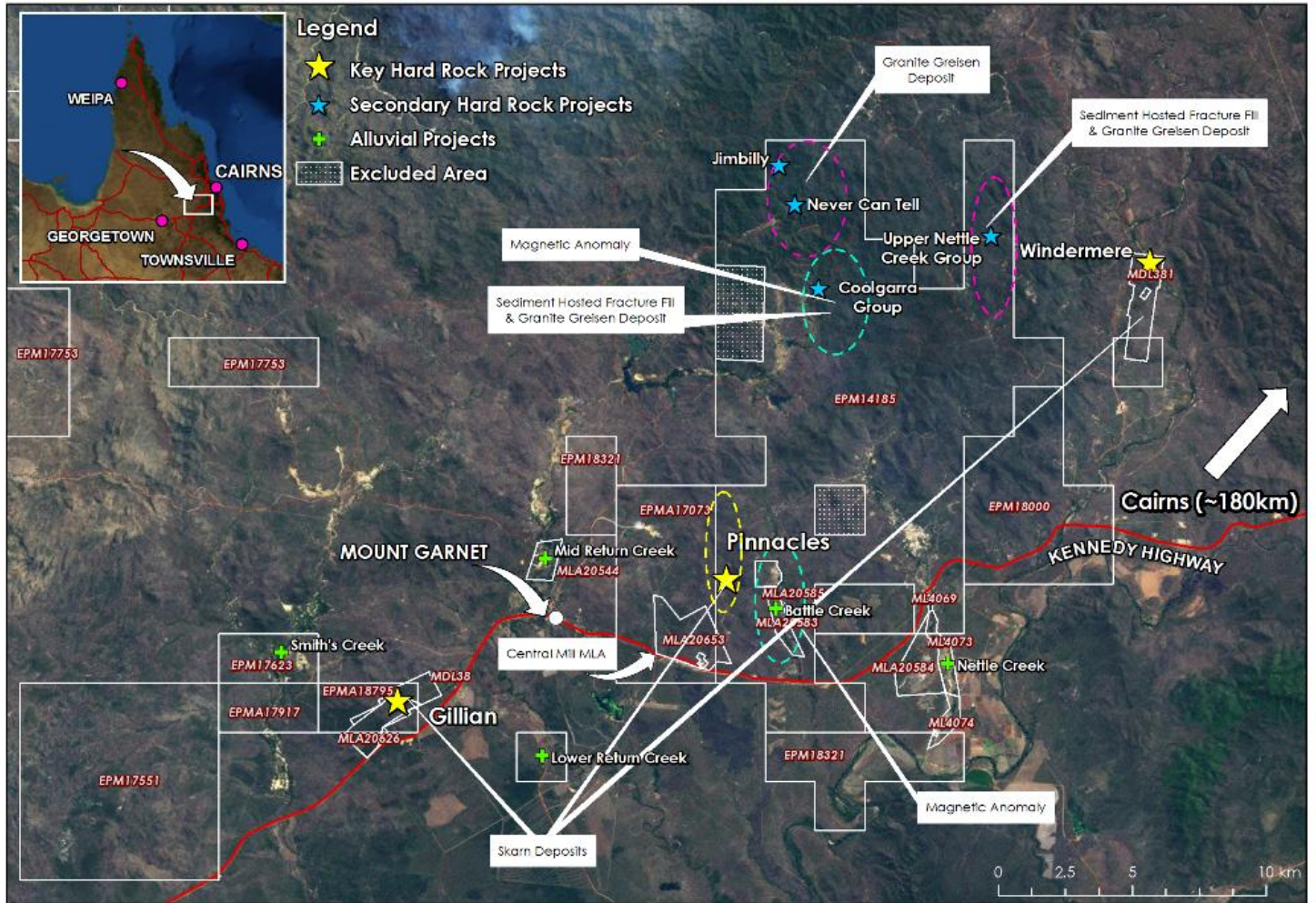


Table 1: JORC Resource Table

TIN (Sn)	Measured tonnes	Grade %	Indicated tonnes	Grade %	Inferred tonnes	Grade %	Total tonnes	Grade %
Gillian	1,203,000	0.82	824,100	0.73	974,100	0.83	3,001,200	0.80
Pinnacles - Wafer	-	-	218,200	0.49	1,133,100	0.39	1,351,300	0.41
Pinnacles - Sniska	-	-	-	-	306,900	0.32	306,900	0.32
Pinnacles - Hartog	-	-	-	-	212,700	0.51	212,700	0.51
Deadmans Gully	-	-	401,500	0.49	-	-	401,500	0.49
TOTAL	1,203,000	0.82	1,443,800	0.63	2,626,800	0.56	5,273,600	0.64

IRON (Fe)	Measured tonnes	Grade %	Indicated tonnes	Grade %	Inferred tonnes	Grade %	Total tonnes	Grade %
Gillian	1,203,000	31.35	824,100	29.75	974,100	30.98	3,001,200	30.79
Pinnacles - Wafer	-	-	218,200	20.21	1,133,100	27.88	1,351,300	16.87
Pinnacles - Sniska	-	-	-	-	306,900	22.90	306,900	22.90
Pinnacles - Hartog	-	-	-	-	212,700	13.75	212,700	13.75
Deadmans Gully	-	-	401,500	34.89	-	-	401,500	34.89
TOTAL	1,203,000	31.35	1,443,800	29.73	2,626,800	27.30	5,273,600	26.39

The information contained in this report that relates to assay results of rock samples and drill chips, to mineral resource estimates and to ore reserve estimates of mineralization is based on information compiled by John Sainsbury (BSc, AusIMM). John Sainsbury is a geologist of 30 years experience and has sufficient experience in the type of mineralisation under consideration to qualify as a Competent Person as defined by the Australasian Code for Reporting of Exploration Results, Mineral Resources and Ore Reserves - JORC Code, 2004 Edition. John Sainsbury is a full time employee of Consolidated Tin Mines Limited and has consented to the inclusion of this information in the form and context in which it appears.

Photo 1: Core sample 101m to 105m



Photo 2: Close up of above



Photo 3: Core sample 105m to 109m



Photo 4: Close up of above

