

CONSOLIDATED
TIN MINES LIMITED



CONSOLIDATED TIN MINES

Overview

September 2009

Ralph De Lacey
Managing Director

ASX: CSD

Forward looking statement

CONSOLIDATED
TIN MINES LIMITED



- This presentation ("Presentation") has been prepared by Consolidated Tin Mines Ltd ("CSD") based on information available to it from its own and third party sources and is not a disclosure document.
- By retaining this Presentation, you (the Recipient) acknowledge and represent to CSD that you have read, understood and accept the terms of this Important Notice. If you do not accept these terms, you should immediately destroy or delete this Presentation.
- This Presentation does not purport to contain all the information that a prospective investor may require in connection with any potential investment in CSD. Each Recipient must make its own independent assessment of CSD before acquiring any securities in CSD ("Securities"). You should not treat the contents of this Presentation, or any information provided in connection with it, as financial advice, financial product advice or advice relating to legal, taxation or investment matters. Before acquiring any Securities, you should consult your own advisers and conduct your own investigation and analysis in relation to CSD.
- No representation or warranty is made by CSD or any of its advisers, agents or employees as to the accuracy, completeness or reasonableness of the information in this Presentation or provided in connection with it. No information contained in this Presentation or any other written or oral communication in connection with it is, or shall be relied upon as, a promise or representation and no representation or warranty is made as to the accuracy or attainability of any estimates, forecasts or projections set out in this Presentation. No liability will attach to CSD or its advisers with respect to any such information, estimates, forecasts or projections.
- CSD does not accept responsibility or liability for any loss or damage suffered or incurred by you or any other person or entity however caused (including, without limitation, negligence) relating in any way to this Presentation including, without limitation, the information contained in or provided in connection with it, any errors or omissions from it however caused (including without limitation, where caused by third parties), lack of accuracy, completeness, currency or reliability or you, or any other person or entity, placing any reliance on this Presentation, its accuracy, completeness, currency or reliability.
- CSD does not accept any responsibility to inform you on any matter arising or coming to CSD's notice after the date of this Presentation which may affect any matter referred to in this Presentation.
- Any liability of CSD, its advisers, agents and employees to you or to any other person or entity arising out of this Presentation including pursuant to the Australian Securities and Investments Commission Act, 2001, Corporations Act 2001 and the Trade Practices Act 1974 or any other applicable law is, to the maximum extent permitted by law, expressly disclaimed and excluded.
- The distribution of this Presentation may be restricted by law in certain jurisdictions. Recipients, and any other persons who come into possession of this Presentation must inform themselves about, and observe any such restrictions.

Future Matters

- This Presentation contains reference to certain intentions, expectations, future plans, strategy and prospects of CSD. Those intentions, expectations, future plans, strategy and prospects may or may not be achieved. They are based on certain assumptions, which may not be met or on which views may differ and may be affected by known and unknown risks. The performance and operations of CSD may be influenced by a number of factors, many of which are outside the control of CSD. No representation or warranty, express or implied, is made by CSD or any of its directors, officers, employees, advisers or agents that any intentions, expectations or plans will be achieved either totally or partially or that any particular rate of return will be achieved.
- Given the risks and uncertainties that may cause CSD's actual future results, performance or achievements to be materially different from those expected, planned or intended, Recipients should not place undue reliance on these intentions, expectations, future plans, strategy and prospects. CSD does not warrant or represent that the actual results, performance or achievements will be as expected, planned or intended.

- Shares on issue: 49.5m
 - 27.4m quoted, 22.1m escrowed
 - Options on issue: 38.5m (exercise by 31st Dec 2013)
 - 19.5m quoted
 - Top 5 Shareholders: 50.28%
 - Cash at bank (end of June 2009) - \$1.2m
 - Share price 0.10 at 18/09/2009
 - Market Cap \$4,995,535
- 

ABOUT CONSOLIDATED TIN MINES LIMITED

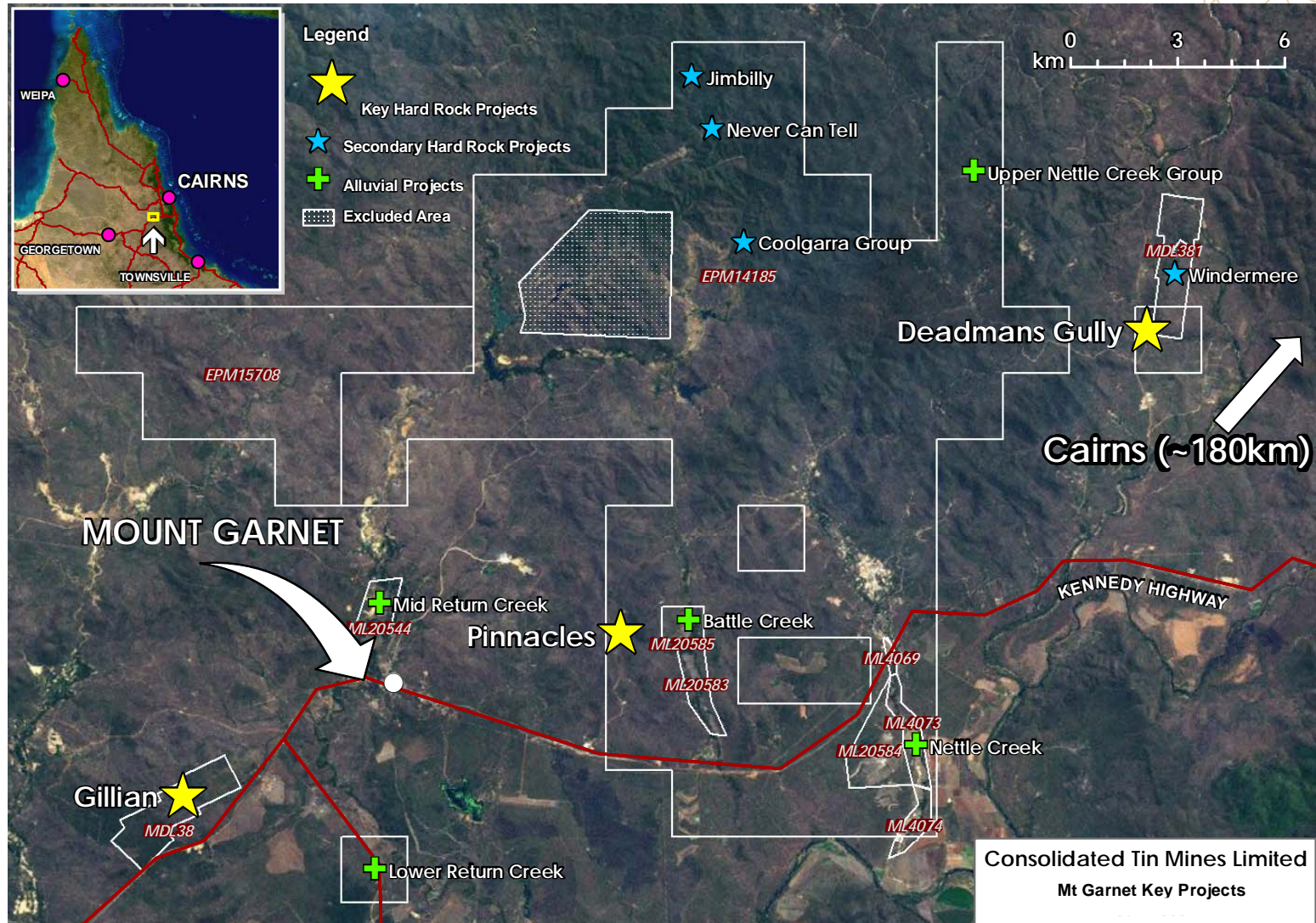
Consolidated Tin Mines Limited (CSD) is a junior exploration company focused on Tin at Mt Garnet in the lower Herberton tin field in North Queensland.

Short to medium term goals are:

- Further define resources at Gillian, Pinnacles and Windermere.
 - Develop a hard rock mining operation.
 - Develop an alluvial mining operation.
 - Explore other known mineralisation within current tenement holding to provide resource expansion.
-

Key Tin Projects at Mt Garnet

CONSOLIDATED
TIN MINES LIMITED



Developing the Hard Rock Tin Project

CONSOLIDATED
TIN MINES LIMITED



Initial focus: To establish 8 to 10 Mt Resource at 0.5% Sn that will justify the establishment of a 1Mtpa centrally located mill producing 5,000 ton tin metal pa.

Most advanced : Gillian Located on MDL38
2004 JORC Resource: 3,029,600t @ 0.79%Sn

Current overall JORC Resource across the three Key Project areas 5,302,000t at average grade 0.61%Sn.

Iron: 5,320,000 at average grade 26.43%Fe

Fluorine: 959,600 t at average grade 15.25%Fr



Progressing Gillian as an individual project.

Part 1.

- Mining Lease Application 20626 lodged baseline environmental monitoring commenced.
- Metallurgy –Full time Senior Development Metallurgist employed
- Further drilling to upgrade JORC Resource Status

Part 2.

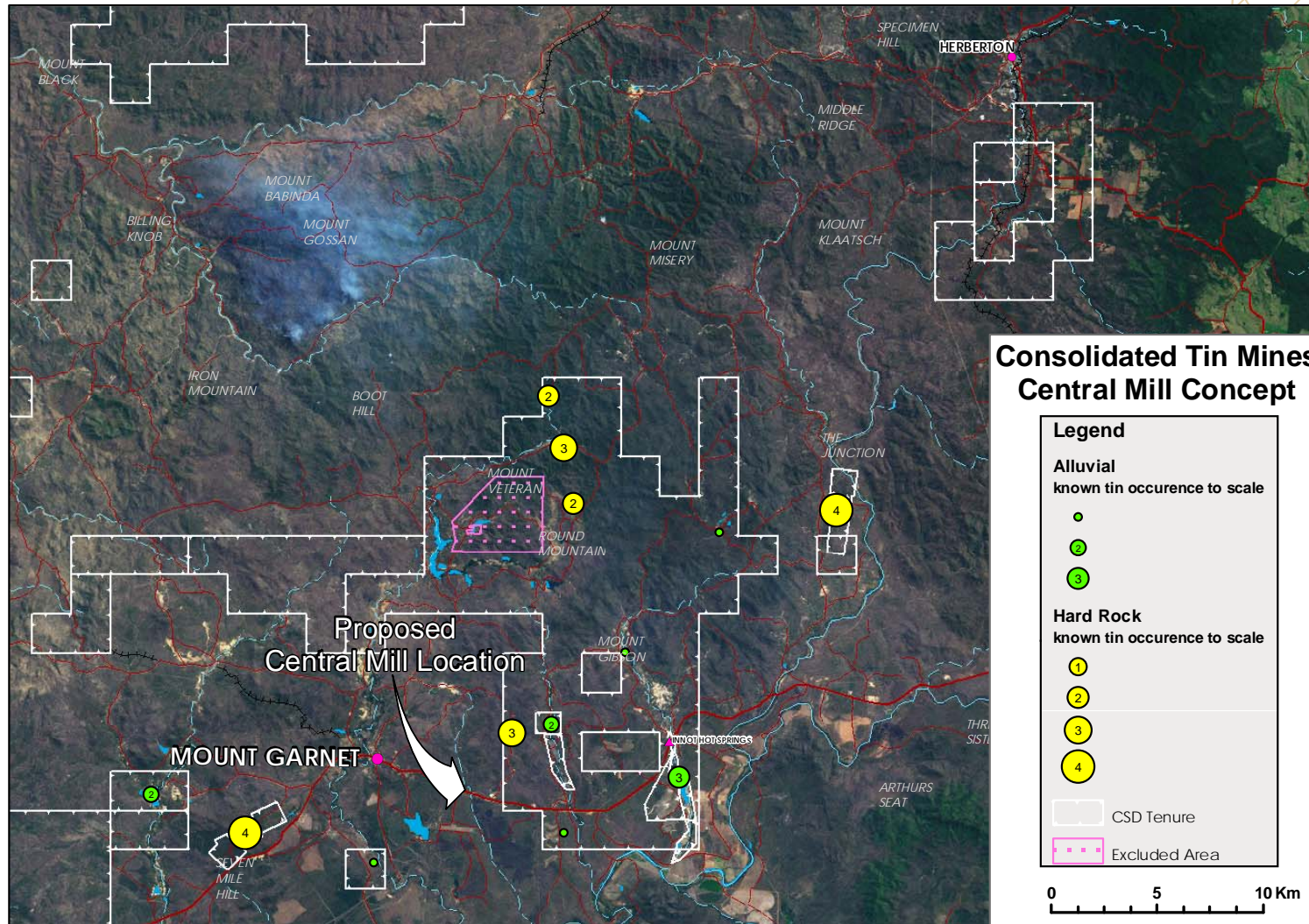
- Feasibility Study
- Mine Plan
Subject to satisfactory feasibility study



- At least 30% tin recoverable at a concentrate assaying 45%Sn
 - A least 60% tin recoverable at a concentrate assaying 17%Sn
 - 22% of iron recoverable at grade better than 60% Fe
 - Iron concentrate will have low assays of impurities; silica, phosphorus, sulphur and aluminium.
 - Results to date help confirm potential for project to be developed into large tonnage, low mining cost, open pit mining operation
 - Gillian Project has JORC compliant resource of 3Mt at 0.8%Sn.
-

Herberton Tin Field Central Mill Concept

CONSOLIDATED
TIN MINES LIMITED



Upper Battle Creek Alluvial Tin Project - Resource

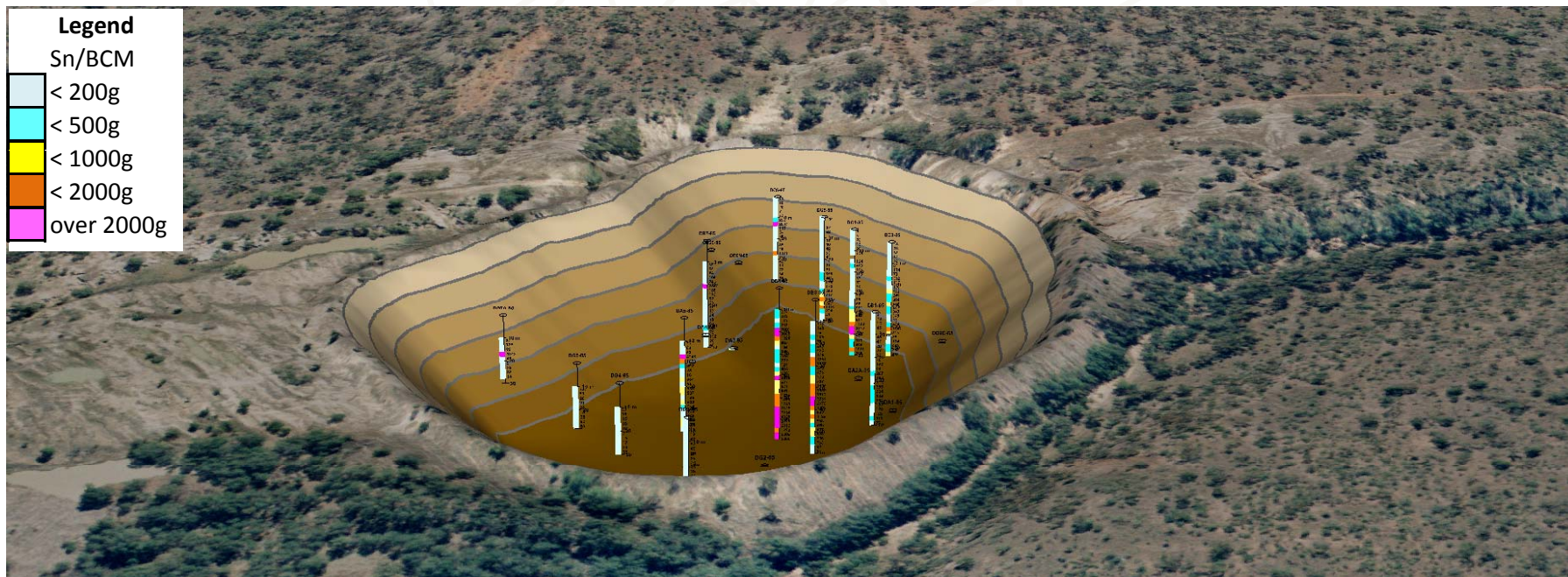
CONSOLIDATED
TIN MINES LIMITED



Located within EPM14185
Mining Lease Applications
ML20583 & ML20585

2004 JORC Indicated Resource

683,000m³ @ 838g Sn/m³



Upper Battle Creek Alluvial Tin Project

CONSOLIDATED
TIN MINES LIMITED



Progressing Upper Battle Creek Alluvial Project

CONSOLIDATED
TIN MINES LIMITED



Progressing Upper Battle Creek as an individual project.

Part 1. (Commenced)

- Mining Lease application and progress Environmental Management Plan
 - Baseline environmental monitoring.
 - Native Title
- Further testing of ore body characteristic.

Part 2.

- Scoping Study
- Mine Plan

Part 3.

- Plant design
Subject to satisfactory feasibility study.

Part 4. Plant Construction

Subject to satisfactory feasibility study and grant of Mining Lease

Part 5. Commence production (mid 2010)

Subject to satisfactory feasibility study and grant of Mining Lease

The alluvial project will ramp up to a production rate 1M cm pa to produce 500 ton contained tin metal in concentrate per annum.

Mine life at UBC two years – then five years at Nettle Creek at 1M cm pa

Current LME Price

CONSOLIDATED
TIN MINES LIMITED



- Current LME Price
USD\$14,805 per tonne Tin Metal
(source: www.lme.co.uk 18/09/09)
- AUD\$17,009
- AUD\$1 = USD\$ 0.87 (18/09/09)

The information contained in this report that relates to assay results of rock samples and drill chips, to mineral resource estimates and to ore reserve estimates of mineralisation has been compiled by John Sainsbury (BSc, AusIMM). John Sainsbury is a geologist of 30 years experience and has sufficient experience in the type of mineralisation under consideration to qualify as a Competent Person as defined by the Australasian Code for Reporting of Exploration Results, Mineral Resources and Ore Reserves - JORC Code, 2004 Edition. John Sainsbury is an executive director of Consolidated Tin Mines Limited. John Sainsbury has consented to the inclusion of this information in the form and context in which it appears.

Contact details

CONSOLIDATED
TIN MINES LIMITED



Ralph De Lacey
Managing Director

395 Lake Street
CAIRNS NORTH, QLD, 4870

Ph: (07) 4032 0123

Fax: (07) 4027 9435

Mob: 0428 163 176

Email: rd@consolidatedtinmines.com.au

Or ralph@nqmining.com.au

John Sainsbury
Technical Director

395 Lake Street
CAIRNS NORTH, QLD, 4870

Mob: 0417 658 235

Email: js@consolidatedtinmines.com.au