

ASX/Media Release
21th December 2009

FURTHER SIGNIFICANT TIN INTERCEPTS FROM GILLIAN DRILLING PROGRAM

JORC Resource upgrade to be confirmed in new year

Australian tin exploration company Consolidated Tin Mines (ASX: CSD) is pleased to announce further results from its most recent drilling program at the company's Gillian Project in northern Queensland.

The latest assay results have produced further significant intercepts of tin mineralisation. Consolidated Tin now plans to confirm a JORC Resource upgrade in the near future.

The results follow those released on 8th December 2009 from the drilling program carried out in November-December 2009.

The drill program was predominantly an infill program which was designed to improve confidence in the extent of mineralisation at the Gillian Project confirmed from the Company's previous drill programs.

Summary highlights of the latest drill assay results include:

Hole 98	31 – 37 metres downhole	7 metres @ 0.74%Sn, 40.7%Fe
Hole 99	28 – 30 metres downhole	2 metres @ 0.80%Sn, 36.6%Fe
Hole 101	6 – 10 metres downhole	4 metres @ 1.84% Sn, 40.8%Fe
Hole 102	12 – 14 metres downhole	2 metres @ 0.75%Sn, 22.1%Fe
Hole 103	41 – 44 metres downhole	3 metres @ 1.07%Sn, 37.0%Fe
Hole 100	21 – 24 metres downhole	3 metres @ 0.81%Sn, 20.2%Fe
Hole 104	8 – 18 metres downhole	10 metres @ 0.81%Sn, 36.3%Fe
Hole 106	24 – 30 metres downhole	6 metres @ 0.50% Sn, 40.2%Fe
Hole 108	18 – 35 metres downhole	17 metres @ 0.73%Sn, 38.9%Fe
Hole 109	17 – 28 metres downhole	11 metres @ 0.74%Sn, 48.8%Fe
Hole 111	19 – 26 metres downhole	7 metres @ 1.23%Sn, 22.0%Fe
	34 – 72 metres downhole	38 metres @ 0.62%Sn, 31.8%Fe
Hole 113	6 – 37 metres downhole	31 metres @ 0.62%Sn, 27.5%Fe
	41 – 49 metres downhole	8 metres @ 1.28%Sn, 39.6%Fe
Hole 116	9 – 10 metres downhole	1 metres @ 0.51% Sn, 42.7%Fe
Hole 124	0 – 3 metres downhole	3 metres @ 0.61%Sn, 23.0%Fe
Hole 127	72 – 95 metres downhole	23 metres @ 1.01%Sn, 30.8%Fe

The Gillian Project is part of Consolidated Tin's wider Mt Garnet Project area, which is located 200km south west of Cairns in the lower Herberton Tin Field, one of Australia's premier tin fields. In addition to tin the company is also assaying for iron.

The Company has drilled a total of 6,300 metres across 137 holes at the Mt Garnet Project and the project currently has a **total JORC Resource of 5.3Mt @ 0.6% Tin**, which includes a **Measured Resource of 724,700t @ 0.81 Tin** at the Gillian project area.

Assays were undertaken by fused bead XRF by the Burnie Research Laboratory in Tasmania, and results are total tin (Sn) and total iron (Fe).

ENDS

For further information please contact;

Ralph De Lacey
Managing Director
Consolidated Tin Mines
P: 07 4081 0241
M: 0428 163 176
E: ralph@nqmining.com.au
W: www.consolidatedtinmines.com.au

James Moses
Investor Relations and Media Relations
Mandate Corporate
M: 0420 991 574
E: james@mandatecorporate.com.au

The information contained in this report that relates to assay results of rock samples and drill chips, to mineral resource estimates and to ore reserve estimates of mineralisation is based on information compiled by John Sainsbury (BSc, AuslMM) an executive director of Consolidated Tin Mines Limited. John Sainsbury is a geologist of 30 years experience and has sufficient experience in the type of mineralisation under consideration to qualify as a Competent Person as defined by the Australasian Code for Reporting of Exploration Results, Mineral Resources and Ore Reserves - JORC Code, 2004 Edition. John Sainsbury has consented to the inclusion of this information in the form and context in which it appears.

ABOUT CONSOLIDATED TIN MINES LIMITED

Consolidated Tin Mines Limited (CSD) is a junior exploration company with current focus on Tin at Mt Garnet in the lower Herberton tin field in North Queensland.

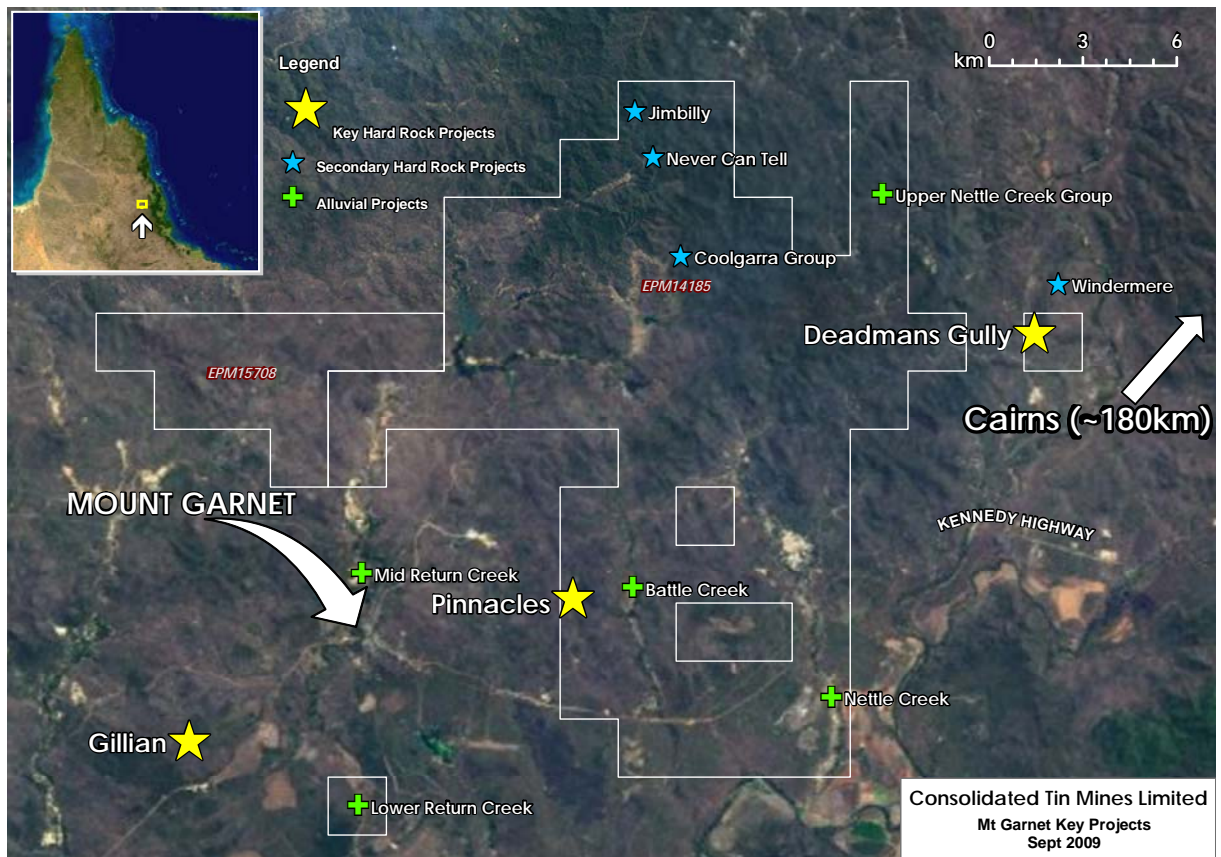
Short to medium term goals are:

- Further expand resources at Gillian and Deadmans Gully while defining resources of known mineralisation at Pinnacles
- Develop a hard rock mining operation
- Develop an alluvial mining operation
- Explore other known mineralisation within current tenement holding to provide resource expansion

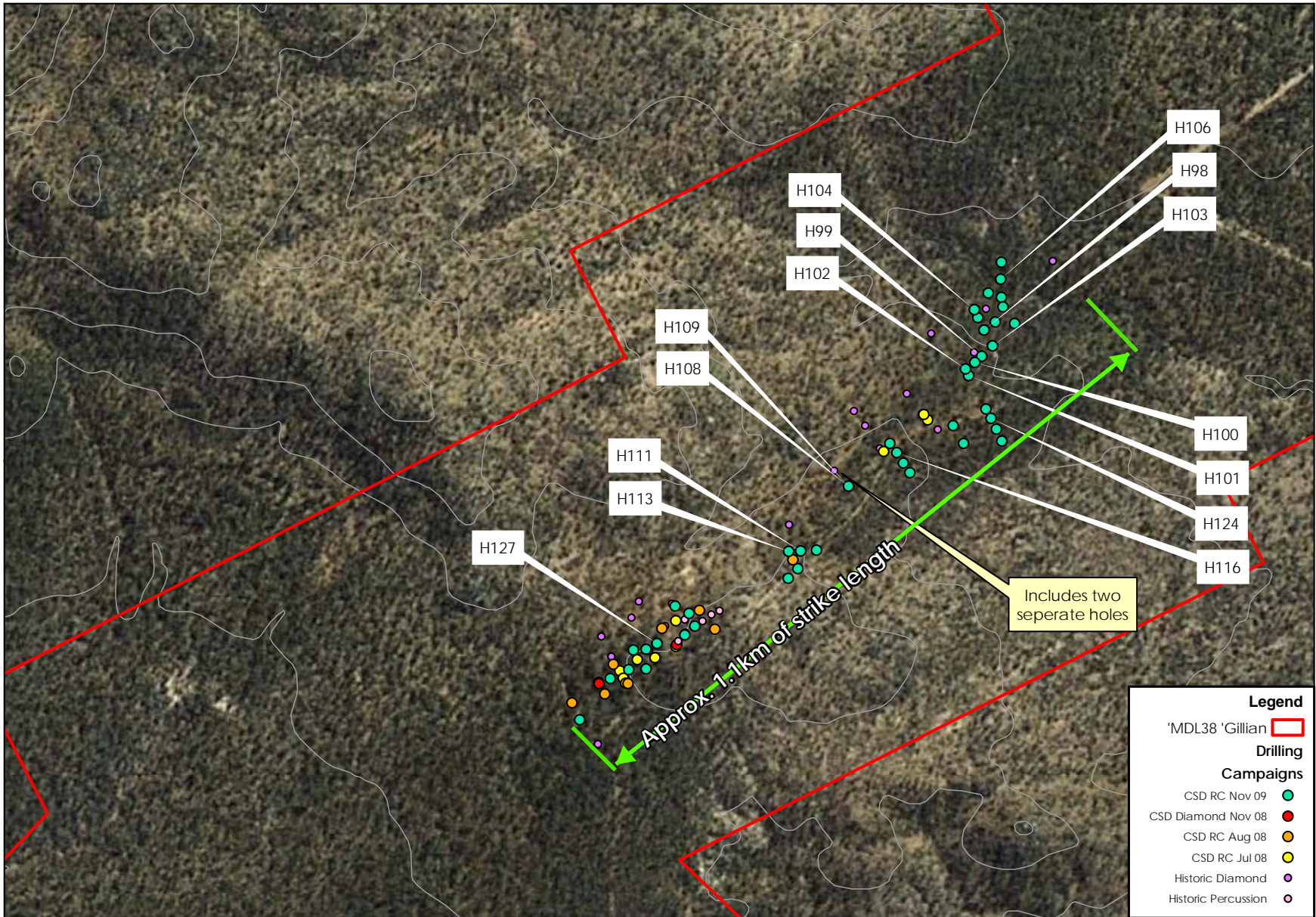
Table 1: Breakdown of Tin JORC Resource

TIN (Sn)	Measured tonnes	Grade %	Indicated tonnes	Grade %	Inferred tonnes	Grade %	Total tonnes	Grade %
Gillian	724,700	0.81	846,100	0.84	1,458,800	0.75	3,029,600	0.79
Pinnacles - Wafer	-	-	218,200	0.49	1,133,100	0.39	1,351,300	0.41
Pinnacles - Sniska	-	-	-	-	306,900	0.32	306,900	0.32
Pinnacles - Hartog	-	-	-	-	212,700	0.51	212,700	0.51
Deadmans Gully	-	-	401,500	0.49	-	-	401,500	0.49
TOTAL	724,700	0.8139	1,465,800	0.69	3,111,500	0.56	5,302,000	0.61

Mt Garnet Key Project Locations



Gillian Drill Collar Locations



Gillian Drill Collar Locations